

O RVIS[®]

SPRING DEALER GUIDE 2020
FLY-FISHING TACKLE



WHY ORVIS

HELIOS 3

PRO

SOLES
BY
MICHELIN

MIRAGE

ULTRALIGHT

Commitment to Best in Class Products

Our commitment to investment in innovation and best-in-class products is producing demand that exceeds even our own expectations.

- Fly Rods – Proprietary thermoplastics, USA manufacturing, and design advances in accuracy and hoop strength.
- Reels – USA machining and manufacturing, and patented ball-and-ramp drag on Mirage and Mirage LT.
- Wading – First in industry collaboration with Michelin®. First use of PU casting on PRO Boot and Cordura® on the PRO Wader. The introduction of the Ultralight Wading System and its targeted benefits to traveling anglers with no compromise in durability.

Product Marketing Strength & Tools

Orvis has demonstrated leadership as a marketing company and H3 launch is a great example.

- Helios 3 Anthem Video— 3.7M views. Overall campaign—more than 10M impressions.
- 2019 Go Big: PRO Boot, PRO Fly Line, Mirage LT.

2020 Go Big Products

Our 2020 Go Big products will all receive this level of marketing exposure, expanding our reach into the Good, Better, Best market segments at all levels from entry-level to premium.

- PRO Wading and Apparel
- Recon
- Clearwater Wading

AHEAD OF OUR TIME

TAKE A LOOK AND YOU'LL DISCOVER WE'RE NOT YOUR GRANDFATHER'S ORVIS.

This is the Orvis aggressively investing in our brand through television, mainstream media such as *Garden and Gun* and *Outside Magazine*, and Orvis Presents grassroots video. The heart of our brand is, and always will be fly fishing. It takes center stage in The Great Awaits Campaign, our commitment to the environment, and our leadership in fly-fishing education. We've brought thousands into the sport and now we're expanding our brand reach to attain more than 130 million impressions. For our dealers and brand partners, the benefit is readily apparent. Orvis is moving forward and we want you to come with us.

S I N C E 1 8 5 6

Promoboxx

We provide participating dealers free professional, pre-built marketing campaigns, digital, and social media content through Promoboxx.

- We do the work and you get results. Facebook, Instagram, Twitter, email, and downloadable graphics for in-store signage and print are continuously updated to keep your content fresh, current, and your marketing synchronized with Orvis nationwide campaigns.

Leader in Fly-Fishing Community Building

We are constantly exploring ways to bring people into the sport, connect them, and keep them fishing, building on our brand reach over the coming years.

- In 2020 we will introduce over 15,000 people to free FF101 classes with well over 100,000 introduced to the sport since its inception.
- Our goals are to get 2M site visits to our Fly Fishing Learning Center and hundreds of thousands views to our education content including Youtube, Orvis News, and Tom's Podcast which now exceeds 12 million.
- 50/50 On the Water women's product and apparel have a significant presence in our 2020 offering.

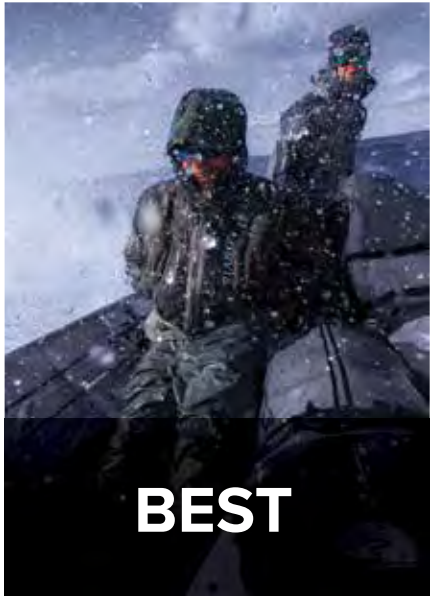
Conservation – 5% for Nature

Orvis has given \$22M in support of conservation efforts from habitat restoration to clean water initiatives around the globe.

- Paid marketing campaigns to drive issue awareness and public comment.
- Boots on the ground lobbying work in Florida and Washington, DC.
- Earned media and opinion pieces in targeted media.
- Video storytelling and social media campaigns to educate and drive awareness.
- Devoted catalog space to the current conservation initiative.



S I N C E T H E B E G I N N I N G



BEST



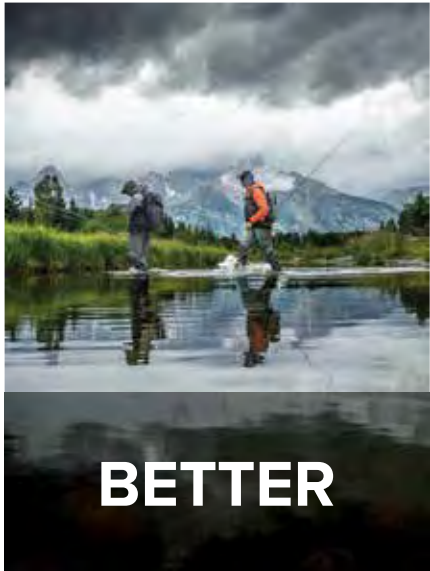
HELIOS 3



MIRAGE FLY REEL



MIRAGE LT FLY REEL



BETTER



RECON



HYDROS FLY REEL



BATTENKILL FLY REEL



GOOD



CLEARWATER



CLEARWATER FLY REEL



QS2RY7
PRO WADER



QS2P9M
PRO WADING BOOT



QS2JM3
PRO WADING JACKET



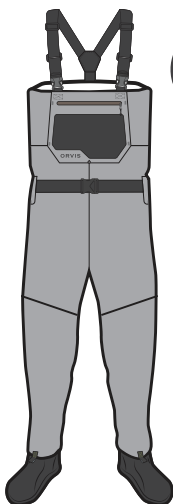
QS2JBY
ULTRALIGHT CONVERTIBLE WADERS



QS2J2R
ULTRALIGHT WADING BOOT



QS2MLC
ULTRALIGHT WADING JACKET



QS2TZX QS2TZY QS2TZZ QS2TZX
CLEARWATER WADERS



QS2P92 QS2RAA QS2RAB QS2RAC
CLEARWATER WADING BOOT



QS2TZ1
CLEARWATER WADING JACKET

NEW

ORVIS
PRO Apparel / Men's and Women's



NEW—aquamarine
2SN828

NEW—gunmetal
2SN809



NEW—aquamarine
2SPA28

NEW—olive
2SPA21

NEW—gunmetal
2SPA09

QS2SN8 - JANUARY DELIVERY - \$129

NEW MEN'S PRO HYBRID LONG-SLEEVED SHIRT

Sizes S-XXL Body-mapped hybrid fabrication for ultimate protection from sun and heat. UPF 50. Athletic Fit.

Polyester/nylon. Washable. Imported.

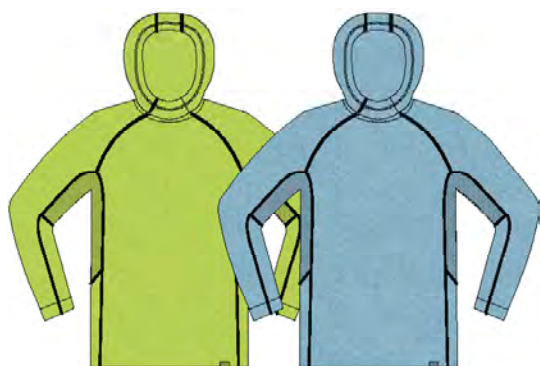


QS2SPA - JANUARY DELIVERY - \$109

NEW MEN'S PRO STRETCH LONG-SLEEVED SHIRT |

Sizes S-XXL Sun and heat protection with stretch. UPF 30.

Nylon/spandex. Washable. Imported.



NEW—citron
2SPC14

NEW—aquamarine
2SPC28



NEW—citron
2SPE14

NEW—aquamarine
2SPE28

NEW—gunmetal
2SPE09

QS2SPC - JANUARY DELIVERY - \$89

NEW MEN'S PRO SUN HOODY | **Sizes S-XXL**

Super lightweight fabric for sun and heat. Athletic Fit.

Polyester. Washable. Imported.



QS2SPE - JANUARY DELIVERY - \$69

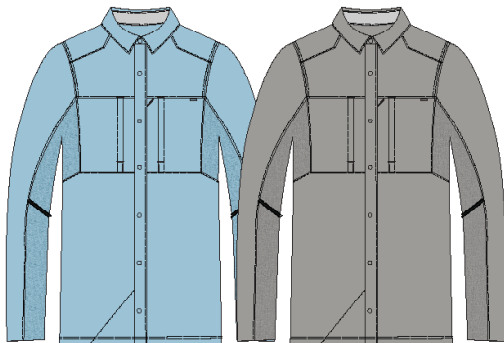
NEW MEN'S PRO SUN CREW | **Sizes S-XXL**

Men's crewneck in a super lightweight fabric for tropical sun and heat. Gussets and laser-cut ventilation in the underarms. Athletic Fit.

Polyester. Washable. Imported.



*Men's sizes S(34-36), M(38-40), L(42-44), XL(46-48), XXL(50-52).



NEW—aquamarine
2SPH28

NEW—gunmetal
2SPH09



NEW—emberglow
2SPJ42

NEW—blue depths
2SPJ03

NEW—vapor
2SPJ09

QS2SPH - JANUARY DELIVERY - \$129

NEW WOMEN'S PRO HYBRID LONG-SLEEVED SHIRT | Sizes XS-XL

Body-mapped hybrid fabrication for ultimate protection from sun and heat. UPF 50. Athletic Fit.

Polyester/nylon. Washable. Imported.

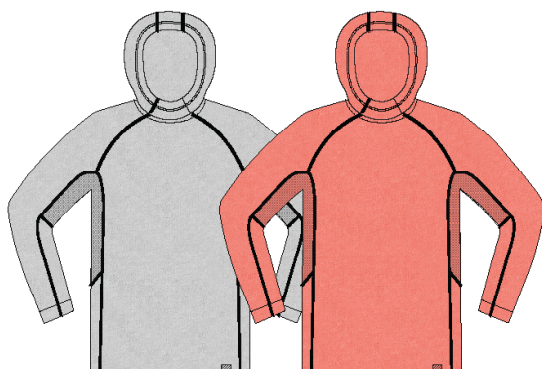


QS2SPJ - JANUARY DELIVERY - \$109

NEW WOMEN'S PRO STRETCH LONG-SLEEVED SHIRT | Sizes XS-XL

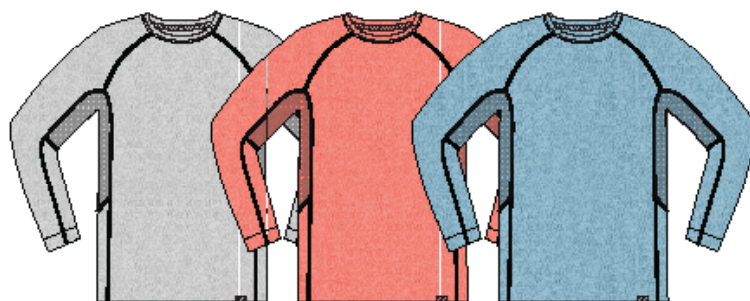
Sun and heat protection with stretch built in. UPF 30.

Nylon/spandex. Washable. Imported.



NEW—vapor
2N9K09

NEW—emberglow
2N9K42



NEW—vapor
2SPL09

NEW—emberglow
2SPL42

NEW—aquamarine
2SPL28

QS2SPK - JANUARY DELIVERY - \$89

NEW WOMEN'S PRO SUN HOODY | Sizes XS-XL

Super lightweight fabric for sun and heat. Athletic Fit

Polyester. Washable. Imported.



QS2SPL - JANUARY DELIVERY - \$69

NEW WOMEN'S PRO SUN CREW | Sizes XS-XL

Women's crewneck in a super lightweight fabric for tropical sun and heat. Gussets and laser-cut ventilation in the underarms. Athletic Fit.

Polyester. Washable. Imported.



*Women's sizes XS(4), S(6-8), M(10-12), L(14-16), XL(18-20).

NEW



QS2TL7 MARCH DELIVERY - \$449

QS2TMB MARCH DELIVERY - \$498

NEW RECON

Updated with performance attributes of Helios 3 technology.

Now in Freshwater and Big Game.

Made in USA.



FEBRUARY DELIVERY

NEW CLEARWATER BOXED OUTFITS

Packaged with Clearwater reel, Clearwater weight-forward floating line, backing, leader, and Cordura® tube.

Imported.

Line wt.	Length	Pcs.	Reel Size	Item #	Price	Delivery Date
5-wt.	8'6"	4	II	QS2Z9K	\$309	FEBRUARY DELIVERY
6-wt.	9'	4	II	QS2Z9L	\$309	FEBRUARY DELIVERY



*black
with silver*



*spool side
in silver
with gray*

MARCH DELIVERY

NEW ORVIS HYDROS® REELS | Sizes I-V

Refined and improved version of the best-selling Hydros SL.

- Reduced weight balances better with lighter-weight fly rods
- Large arbor
- Improved seal on the sealed carbon and stainless drag

Imported.

Size	Line wts.	Weight in oz.	Dia.	Reel Item #	Reel Price	Spool Item #	Spool Price	Dacron® Backing
HYDROS SL I	1-3	4.7	3.1"	QS2ZAS	\$198	QS2Z4C	\$98	20-lb. & WF2F: 75 yds.
HYDROS SL II	3-5	5.0	3.4"	QS2ZAT	\$219	QS2Z4E	\$109	20-lb. & WF4F: 125 yds.
HYDROS SL III	5-7	5.5	3.7"	QS2ZAY	\$239	QS2ZAF	\$119	20-lb. & WF6F: 125 yds.
HYDROS SL IV	7-9	6.6	4"	QS2ZAZ	\$259	QS2Z4G	\$129	20-lb. & WF8F: 200 yds.
HYDROS SL V	9-11	7.7	4.2"	QS2ZA0	\$279	QS2Z4H	\$139	30-lb. & WF10F: 225 yds.



FEBRUARY DELIVERY - \$79-\$89

NEW HYDROS LINES

Smooth lines with AST Technology, Line ID, Welded Loops.

Made in USA

NEW



QS2TZ1 - FEBRUARY DELIVERY - \$198

NEW CLEARWATER WADING JACKET | Sizes S-XXL

An exceptional value in a full-featured wading jacket.

- Three-layer nylon shell fabric with fully-taped seams
- 20K Waterproofness and 15K Breathability rating
- Integrated Dolphin Skin cuff system

Nylon shell / polyurethane membrane / nylon tricot liner. Washable. Imported.



FEBRUARY DELIVERY - \$139

NEW MEN'S AND WOMEN'S CLEARWATER WADING BOOT

QS2P92 MEN'S RUBBER SOLE Whole sizes 7-15

QS2RAA MEN'S FELT SOLE

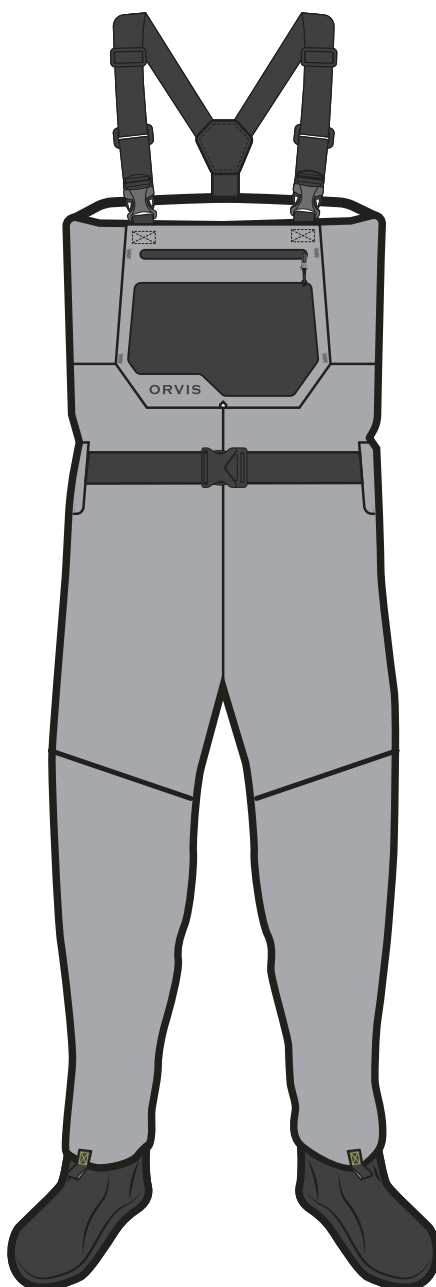
QS2RAB WOMEN'S RUBBER SOLE Whole sizes 6-11

QS2RAC WOMEN'S FELT SOLE

A complete upgrade of the best-selling Clearwater wading boot.

- Full synthetic leather upper
- Scratch rubber toe, vamp, and heel counter
- Integrated EVA foam footbed

Synthetic leather upper. Imported.



FEBRUARY DELIVERY - \$198

NEW MEN'S AND WOMEN'S CLEARWATER WADER

QS2TZX Men's In 14 sizes S-XXL incl short and long

QS2TZY Women's in 16 sizes XS-XXL incl. small and petite

Updated modern fit to eliminate traditional wader bulk.

- 30K Waterproofness / 8K Breathability rating
- Kangaroo-style handwarmer pocket
- Updated anatomical neoprene booties

Nylon shell / polyurethane membrane / nylon tricot liner. Washable. Imported.

QS2TZZ - FEBRUARY DELIVERY - \$298

NEW CLEARWATER BOOTFOOT WADER - FELT ONLY

In 13 total sizes, M-XXL, boot sizes 8-14

Updated modern fit, value-priced, felt-soled bootfoot

- 30K Waterproofness / 8K Breathability rating
- External storage pocket with stretch panel
- Kangaroo-style handwarmer pocket

Nylon shell / polyurethane membrane / nylon tricot liner. Hand wash. Imported.

Captain David Mangum patiently waits to cast at migrating tarpon. Photo: Matt Shaw

3D ACCURACY
POWER

3F ACCURACY
PRESENTATION



ACCURACY AT DISTANCE,

with the power for pinpoint delivery of a streamer to a distant cut bank or the perfect lead in the wind to a cruising redfish at 60 plus feet.

ACCURACY WITH FEEL,

a dry-fly angler's dream with the ability to drop an Adams in a teacup or put a Charlie on a tailing bonefish's nose at 40 feet.



RODS STARTING AT \$898.

MADE IN USA

16 Helios 3F rods from 3- to 8-weight including a 10'6" 3-weight and 10' rods in 4-, 5, 6, 7-weight models.
10 Helios 3D rods from 4- to 12 weight, including a 10' 7-weight. Comes with aluminum rod tube, cloth sack, and 25-Year Guarantee.

HELIOS 3F RODS FROM \$898

Model	Line	Lgth.	Pcs.	Rod
QS2M5T	3-wt.	7'6"	4	\$898
QS2M39	3-wt.	8'4"	4	\$898
QS2M4A	3-wt.	10'6"	4	\$898
QS2M4B	4-wt.	8'6"	4	\$898
QS2M4C	4-wt.	9'	4	\$898
QS2M4E	4-wt.	10'	4	\$898
QS2M4F	5-wt.	8'6"	4	\$898
QS2M4G	5-wt.	9'	4	\$898

HELIOS 3F RODS continued

Model	Line	Lgth.	Pcs.	Rod
QS2M4H	5-wt.	10'	4	\$898
QS2M4J	6-wt.	9'	4	\$898
QS2M4K	6-wt.	9'6"	4	\$949
QS2M4L	6-wt.	10'	4	\$949
QS2M4M	7-wt.	9'	4	\$949
QS2M4N	7-wt.	10'	4	\$949
QS2M4P	8-wt.	9'	4	\$949
QS2M4R	8-wt.	10'	4	\$949

HELIOS 3D RODS FROM \$898

Model	Line	Lgth.	Pcs.	Rod
QS2M47	4-wt.	9'	4	\$898
QS2M48	5-wt.	9'	4	\$898
QS2M49	6-wt.	9'	4	\$949
QS2M5A	7-wt.	9'	4	\$949
QS2S0P	7-wt.	10'	4	\$949
QS2M5B	8-wt.	9'	4	\$949
QS2M5C	9-wt.	9'	4	\$949
QS2M5E	10-wt.	9'	4	\$949
QS2M5F	11-wt.	9'	4	\$949
QS2M5G	12-wt.	9'	4	\$949

NEW

ORVIS MISSION TWO-HANDED RODS

HELIOS 3 ACCURACY AND AMERICAN-MADE CRAFTSMANSHIP

Designed and Built in Vermont for Dedicated Two-Handed Anglers

ORVIS
MISSION

The Orvis Mission Two-Handed Rod Series is a comprehensive American-made seven-rod series encompassing the two-handed casting spectrum from compact and versatile 11-foot rods to big-water 14 and 15-foot models. Mission rods are the result of Helios 3 design advancement techniques, tested by experts from the Pacific Northwest to Europe. Helios 3 construction design dampens vibrations making casts easier and more accurate with an inherent autocorrect that allows even a mediocre cast to be rescued by these rods. The increased hoop strength we obtain by using H3 construction means less energy lost and more efficient energy transfer. It is easier to develop fluid power in the cast with less effort, because the rods dampen quicker with no wobble, shooting long casts with accurate presentation. Made in USA.

ORVIS[®] MISSION / TWO-HANDED FLY RODS

OCTOBER DELIVERY - \$798

MISSION TWO-HANDED RODS

An American-made two-handed rod series with Helios 3 technology.

Made in the USA.

- American-made two-handed rod series
- Seven rods from 11-foot to 15-foot.
- Designed and developed with Helios 3 construction technique
- Deliver superior yet forgiving two-handed performance
- Dampens vibrations making casts easier and more accurate
- 6 piece travel friendly 14' and 15' models
- Matte Olive blank with orange accents
- Quick rod identifier on the blank
- Composite cork on grip in high wear areas
- Chrome snake and stripping guide with a SiC insert
- Reel seat is downlocking, self-indexing, with a solid aluminum barrel

Rod	Rod Weight	Skagit Grains	Skagit Grams	Recommended Tips	Scandi Grains	Scandi Grams	Recommended Poly Leader	Recommended Running Line Diameter (in.)	Recommended Running Line Diameter (mm)
11'4"	3wt	230 gr	14.9 gm	50-80 gr	180 gr	11.7 gm	7'	0.025"	0.635 mm
11'	7wt	360 gr	23.3 gm	80-120 gr	300 gr	19.4 gm	7'-10'	0.031"	0.787 mm
11'	8wt	420 gr	27.2 gm	80-120 gr	360 gr	23.3 gm	7'-10'	0.031"	0.787 mm
12'	6wt	420 gr	27.2 gm	80-120 gr	390 gr	25.3 gm	7'-10'	0.031"	0.787 mm
13'	7wt	520 gr	33.7 gm	80-120 gr	450 gr	29.1 gm	7'-10'	0.031"	0.787 mm
13'6"	8wt	560 gr	36.3 gm	120-160 gr	510 gr	33 gm	7'-10'	0.038"	0.965 mm
14'	9wt	640 gr	41.5 gm	160 gr	565 gr	36.6 gm	10'	0.038"	0.965 mm
15'	10wt	n/a	n/a	n/a	640 gr	38.9 gm	10'	0.038"	0.965 mm

NEW

NEW AND IMPROVED

with Helios 3 Technology

Expanded Offering with 22 Models

ORVIS

RECON

The Helios 3 is the benefactor behind the new and updated Recon Fly Rod Series, utilizing the performance attributes of Helios 3 to refine and improve the Recon. Increased hoop strength, better tracking, improved damping, and ultimately, significantly improved accuracy are now incorporated into the Recon for a mid-priced rod with premium performance built in. Not only is it more accurate, but it is stronger, more impact resistant and offers the mid-price buyer access to the best technology Orvis fly rods have to offer.

The new Recon Series offers 22 models from trout to tarpon with 14 freshwater models including four 10-foot rods in 2-, 3-, 4- and 5-weight, and eight big-game rods including two 10-foot rods in 7-, and 8-weight models. Backed by our 25-Year Guarantee. Made in the USA.



MARCH DELIVERY

NEW RECON® FRESHWATER RODS

13 freshwater models.

Made in USA.

- Freshwater rods are matte olive with charcoal and spring green accents
- Pewter type III anodized aluminum reel seat with wood insert
- Silver snake and stripping guides
- Raw aluminum rod tube
- Backed by our 25-Year Guarantee

MARCH DELIVERY

NEW RECON BIG GAME RODS

9 big game models.

Made in USA.

- Big-game models are matte blue with charcoal and light blue accents
- Pewter type III anodized solid aluminum reel seat
- Silver snake and stripping guides
- Raw aluminum rod tube
- Backed by our 25-Year Guarantee

FRESHWATER RODS

Model	Line	Lgth.	Pcs.	Rod Price
QS2TMG	2-wt.	7'6"	4	\$449
QS2YLB	2-wt.	10'	4	\$449
QS2TMH	3-wt.	7'6"	4	\$449
QS2TMJ	3-wt.	8'4"	4	\$449
QS2TMK	3-wt.	10'	4	\$449
QS2TML	4-wt.	8'	4	\$449
QS2TMM	4-wt.	8'6"	4	\$449

Model	Line	Lgth.	Pcs.	Rod Price
QS2TL5	4-wt.	9'	4	\$449
QS2TMN	4-wt.	10'	4	\$449
QS2TL6	5-wt.	8'6"	4	\$449
QS2TL7	5-wt.	9'	4	\$449
QS2TMP	5-wt.	10'	4	\$449
QS2TL8	6-wt.	9'	4	\$449

BIG GAME RODS

Model	Line	Lgth.	Pcs.	Rod Price
QS2TL9	6-wt.	9'	4	\$498
QS2TMR	6-wt.	9'6"	4	\$498
QS2TMA	7-wt.	9'	4	\$498
QS2TMS	7-wt.	10'	4	\$498
QS2TMB	8-wt.	9'	4	\$498
QS2TMT	8-wt.	10'	4	\$498
QS2TMC	9-wt.	9'	4	\$498
QS2TME	10-wt.	9'	4	\$498
QS2TMF	12-wt.	9'	4	\$498



ORVIS

Superfine

FEEL EVERYTHING.

As fly-rod technology progressed, rods became stiffer and faster, capable of firing laser-thin loops across longer distances. But there are times when it's beneficial to go slow. To feel the cast evolve. The Full Flex profile was inherent in bamboo rods by the very nature of the material. Superfine® rods have always emulated that feel and continue the Full-Flex tradition of a rod that reaches down into your hand and tells you the precise moment to present your cast, dropping a fly on the water with the grace of a natural. Whether handcrafted bamboo built by the present generation in a long, proud line of Orvis craftsmen or classic fiberglass, these rods will help you appreciate the rhythms found within fly fishing. Get ready to change the way you feel.



MADE IN USA

IMMEDIATE DELIVERY

BAMBOO

The result of 160 years of Orvis craftsmanship handed down from generation to generation. *1856 to come with 2 tips in 2020.*

BAMBOO RODS

Model	Line	Lgth.	Pcs.	Price
PENN'S CREEK				
QS9731	4-wt.	7'	2	\$2,998
ADIRONDACK				
QS9732	5-wt.	7'6"	2	\$2,998
1856				
QS2FJX	5-wt.	8'	3	\$3,298

MADE IN USA

IMMEDIATE DELIVERY - \$429

SUPERFINE GLASS

Superfine® Glass brings you smooth, slow, sexy casting with the strength to get the job done.

SUPERFINE GLASS RODS

Model	Line	Lgth.	Pcs.
QS2NSP	2-wt.	6'6"	3
QS2EGB	3-wt.	7'6"	3
QS8T76	4-wt.	7'6"	3
QS8T77	5-wt.	8'	3
QS2EGH	6-wt.	8'6"	3
QS2NSR	8-wt.	8'8"	4



ORVIS®

CLEARWATER

Innovation for Everyone

The Clearwater® Rod Series is not just a cosmetic facelift, but a complete overhaul from the ground up by our Vermont rod designers. Everything has changed except the value. It's still the best fly rod you can buy for the money, but with a significant upgrade in performance and looks. Each rod was designed with a purpose-built profile and action to handle the kind of fishing the rod model would traditionally be used for, from medium-action small stream rods to medium-fast freshwater rods and fast-action big-game rods. Designed in Vermont.



IMMEDIATE DELIVERY

CLEARWATER RODS

Comprehensive, value-priced rod series.

Imported.

- The Clearwater® Rod Series offers 31 models
- 10 freshwater, 9 big game, 4 6-piece travel rods, and 8 two-handed rods
- Complete overhaul from the ground up by our Vermont rod designers
- Comprehensive series that covers every angler from small stream to two handers
- Quiver models include Tightline 10' 3-wt., Musky 9'4" 11-wt., and Trout Two Hander 11'4" 3wt.
- Each rod was designed with a purpose-built profile and action
 - Medium-action small stream rods to medium-fast freshwater rods and fast-action big game rods
- Blanks are black chrome with white accents
- Quick rod identifier on the blank
- Chrome snake and stripping guide with a ceramic insert
- Full black nickel aluminum reel seats
- Rods with fighting butts have composite tips for durability
- Two-handed rods have composite on the tip of the foregrip
- Comes with gray Cordura® rod tube
- Designed in Vermont

Introducing Four New Clearwater
6-piece travel rods replacing the best selling Frequent Flyers. The 865-6, 905-6, 906-6, and 908-6 are slated for fall delivery. Newly designed in 6-piece for easy half-rod breakdown and transport.



IMMEDIATE DELIVERY

Model	Line	Length	Pcs.	Rod price	Model	Line	Length	Pcs.	Rod price	Model	Line	Length	Pcs.	Rod price
QS2S69	3-wt	7'6"	4	\$198	QS2S70	5-wt.	9'	6	\$229	QS2S72	8-wt.	9'	6	\$269
QS2S7A	3-wt	10'	4	\$198	QS2S7K	5-wt	10'	4	\$198	QS2S7S	8-wt	10'	4	\$249
QS2S73	3-wt.	11'4"	4	\$398	QS2S7L	6-wt	9'	4	\$198	QS2S75	8-wt.	11'	4	\$398
QS2S7B	4-wt	7'6"	4	\$198	QS2S7I	6-wt.	9'	6	\$229	QS2S8A	8-wt.	13'6"	4	\$398
QS2S7C	4-wt	8'6"	4	\$198	QS2S7M	6-wt	9'6"	4	\$249	QS2S7T	9-wt	9'	4	\$249
QS2S7E	4-wt	9'	4	\$198	QS2S76	6-wt.	12'	4	\$398	QS2S8B	9-wt.	14'	5	\$398
QS2S7F	4-wt	10'	4	\$198	QS2S7N	7-wt	9'	4	\$249	QS2S7X	10-wt	9'	4	\$249
QS2S7Z	5-wt.	8'6"	6	\$229	QS2S7P	7-wt	10'	4	\$249	QS2S8C	10-wt.	15'	5	\$398
QS2S7H	5-wt	8'6"	4	\$198	QS2S74	7-wt.	11'	4	\$398	QS2S7Y	11-wt	9'4"	4	\$249
QS2S7J	5-wt	9'	4	\$198	QS2S79	7-wt.	13'	4	\$398	QS2S8E	12-wt	9'	4	\$249
					QS2S7R	8-wt	9'	4	\$249					

USE BOTH HANDS

TWO-HANDED RODS FOR EVERY ANGLER

IMMEDIATE DELIVERY - \$398

CLEARWATER TWO-HANDED RODS

Newly designed, value priced, two-handed rods.

Imported.

- Eight rods from 11-foot to 15-foot
- 5-piece 14-and 15-foot models.
- Blanks are black chrome with white accents
- Quick rod identifier on the blank
- Chrome snake and stripping guide with a ceramic insert
- Full black nickel aluminum reel seats
- Rods with fighting butts have composite tips for durability
- Two-handed rods have composite on the tip of the foregrip
- Comes with gray Cordura® rod tube
- Designed in Vermont



Model	Line	Length	Pcs.
QS2S73	3-wt.	11'4"	4
QS2S76	6-wt.	12'	4
QS2S74	7-wt.	11'	4
QS2S79	7-wt.	13'	4

Model	Line	Length	Pcs.
QS2S75	8-wt.	11'	4
QS2S8A	8-wt.	13'6"	4
QS2S8B	9-wt.	14'	5
QS2S8C	10-wt.	15'	5



OCTOBER DELIVERY - \$798

MISSION TWO-HANDED RODS

American-made two-handed rods with Helios 3 technology.

Made in the USA

Model	Line	Lgth.	Pcs.	Model	Line	Lgth.	Pcs.
QS2M5K	6-wt.	12'	4	QS2M5N	8-wt.	13'6"	4
QS2M5H	7-wt.	11'	4	QS2M5P	9-wt.	14'	6
QS2M5L	7-wt.	13'	4	QS2M5S	10-wt.	15'	6
QS2M5J	8-wt.	11'	4				

- Seven rods from 11-foot to 15-foot.
- Designed and developed with Helios 3 construction technique
- Deliver superior yet forgiving two-handed performance
- Dampens vibrations making casts easier and more accurate
- 6 piece travel friendly 14' and 15' models
- Matte Olive blank with orange accents
- Quick rod identifier on the blank
- Composite cork on grip in high wear areas
- Chrome snake and stripping guide with a SiC insert
- Reel seat is downlocking, self-indexing, with a solid aluminum barrel

Rod	Rod Weight	Skagit Grains	Skagit Grams	Recommended Tips	Scandi Grains	Scandi Grams	Recommended Poly Leader	Recommended Running Line Diameter (in.)	Recommended Running Line Diameter (mm)
11'4"	3wt	230 gr	14.9 gm	50-80 gr	180 gr	11.7 gm	7'	0.025"	0.635 mm
11'	7wt	360 gr	23.3 gm	80-120 gr	300 gr	19.4 gm	7'-10'	0.031"	0.787 mm
11'	8wt	420 gr	27.2 gm	80-120 gr	360 gr	23.3 gm	7'-10'	0.031"	0.787 mm
12'	6wt	420 gr	27.2 gm	80-120 gr	390 gr	25.3 gm	7'-10'	0.031"	0.787 mm
13'	7wt	520 gr	33.7 gm	80-120 gr	450 gr	29.1 gm	7'-10'	0.031"	0.787 mm
13'6"	8wt	560 gr	36.3 gm	120-160 gr	510 gr	33 gm	7'-10'	0.038"	0.965 mm
14'	9wt	640 gr	41.5 gm	160 gr	565 gr	36.6 gm	10'	0.038"	0.965 mm
15'	10wt	n/a	n/a	n/a	640 gr	38.9 gm	10'	0.038"	0.965 mm



IMMEDIATE DELIVERY

ENCOUNTER BOXED OUTFITS

Packaged with a large arbor Encounter® reel, weight-forward floating line, backing, leader, and Cordura® tube.

- 107-4 outfit comes two extra spools—one with intermediate line, and one with a type III full sinking line

Imported



CLEARWATER BOXED OUTFITS

Packaged with Clearwater reel, Clearwater weight-forward floating line, backing, leader, and Cordura® tube

Imported.

Line wt.	Length	Pcs.	Reel Size	Item #	Price
5-wt.	8'	4	II	QS2TMX	\$169
	8'6"	4	II	QS8P42	\$169
	9'	4	II	QS8P43	\$169
6-wt.	9'	4	II	QS2EGJ	\$169
	9'6"	4	II	QS8P44	\$169
7-wt.	10'	4	IV	QS2NSS	\$298
8-wt.	9'	4	IV	QS8P45	\$169

Line wt.	Length	Pcs.	Reel Size	Item #	Delivery Date	Price
5-wt.	8'6"	4	II	NEW QS2Z9K	FEBRUARY DELIVERY	\$309
5-wt.	9'	4	II	QS2ZA3	IMMEDIATE DELIVERY	\$309
6-wt.	9'	4	II	NEW QS2Z9L	FEBRUARY DELIVERY	\$309
8-wt.	9'	4	IV	QS2ZA4	IMMEDIATE DELIVERY	\$369



QS2NJ6 - IMMEDIATE DELIVERY - \$49

PRACTICASTER

One-piece rod with cork grip, and green line with orange fly.

Imported.



QS8Y4P - IMMEDIATE DELIVERY - \$229

ENCOUNTER SPIN/FLY COMBO

Interchangeable butt section for spin and fly. 7' rod. Two reels.

Imported.

Orvis Product Developer and competitive angler, Jesse Haller, Euro Nymphing on the Farmington River, CT. photo: Adam Agnew Media

EUROPEAN NYMPHING

"European nymphing technique maximizes an angler's ability to cover more water and present nymphs in the most effective way possible. Using a longer, lighter-weight rod and a tactical nymph line offers enhanced reach, sensitivity, and reduced line sag. This technique gets the flies to the strike zone faster, keeps them in the feeding lane longer, and offers anglers much improved contact with their flies for more effective and efficient drifts."

—Jesse Haller

IMMEDIATE DELIVERY - \$898

HELIOS 3F 10'6" 3-WT. ROD

Superior Helios 3F feel for European-style nymphing.

Made in USA

Line wt.	Length	Pcs.	Item #
3-wt.	10'6"	4	QS2M4A



FEBRUARY DELIVERY - \$449

RECON 10' 3- AND 2-WT. RODS

Newly designed Recons for Euro-nymphing.

Made in USA

Line wt.	Length	Pcs.	Item #
2-wt.	10'	4	QS2YLB
3-wt.	10'	4	QS2TMK



IMMEDIATE DELIVERY - \$229

CLEARWATER® 10' 3-WT. ROD

Purpose-built and value-priced European nymphing.

Imported

Line wt.	Length	Pcs.	Item #
3-wt.	10'	4	QS2S7A



QS22B1 - FEBRUARY DELIVERY - \$59

NEW HYDROS TACTICAL NYMPH

Ultra-thin to reduce sag.

Made in USA



QS2YA5 - IMMEDIATE DELIVERY - \$11.95

TACTICAL NYMPHING LEADER

Tri-color for enhanced visibility.

Imported



QS2MXG - IMMEDIATE DELIVERY - \$9.99

TACTICAL SIGHTER TIPPET

Equivalent to OX. Tricolor.

Imported



QS2K1Z - IMMEDIATE DELIVERY - \$8.95

TIPPET RINGS

Change tippets with ease.

Imported

ORVIS[®] MIRAGE / FLY REEL

pewter



IMMEDIATE DELIVERY

MIRAGE[®] | Sizes II-VI

American-made large arbor with sealed and maintenance-free carbon and stainless steel disc drag.

- Zero to full drag in a single drag knob rotation
- Super large arbor for increased retrieve rates and reduction in line coil
- Ergonomically designed machined aluminum handle

Made in USA.

Size	Line wts.	Diameter	Reel wts	Item #	Reel Price	Spool Price	Dacron [®] Backing
MIRAGE II	3-5	3½"	5.6 oz	QS2J6B	\$498	\$269	20-lb. & WF4F: 125 yds.
MIRAGE III	5-7	3⅞"	6.2 oz	QS2J6C	\$579	\$289	20-lb. & WF6F: 125 yds.
MIRAGE IV	7-9	4¼"	8.9 oz	QS2J6E	\$649	\$319	20-lb. & WF8F: 200 yds.
MIRAGE V	9-11	4½"	9.7 oz	QS2J6F	\$729	\$349	30-lb. & WF10F: 225 yds.
MIRAGE VI	11-13	5"	12.9 oz	QS2J6G	\$849	\$369	30-lb. & WF12F: 325 yds.
VI DEEP	13-15	5"	13 oz	QS2J6G	\$849	\$369	50lb Gel-spun & WF14F 600 yds*



spool side in
midnight black



olive



spool side
in olive



midnight

IMMEDIATE DELIVERY

MIRAGE LT | Sizes I-IV

A lightweight evolution of the Mirage designed to balance perfectly with lighter freshwater rods.

- 30% lighter and 30% narrower than Mirage
- Mirage LT III weighs just 4.3 oz. as compared to the Mirage III at 6.2 oz.
- Zero to full drag in a single drag knob rotation

Made in USA.



Size	Line wts.	Dia. & Wt.	Item #	Reel Price	Item #	Spool Price	Capacity 20lb. Dacron® Backing
MIRAGE LT I	1-3	3.1" 4.1 oz.	QS2MTS	\$349	QS2Y9B	\$198	WF2: 75 yds.
MIRAGE LT II	3-5	3.4" 4.3 oz.	QS2MTT	\$379	QS2Y9F	\$209	WF4: 125 yds.
MIRAGE LT III	5-7	3.7" 4.5 oz.	QS2MTX	\$398	QS2Y9J	\$219	WF6: 125 yds.
MIRAGE LT IV	7-9	4" 5 oz.	QS2MTY	\$429	QS2Y9M	\$229	WF8: 200 yds.



black
with silver



spool side
in silver
with gray

MARCH DELIVERY

NEW ORVIS HYDROS® REELS | Sizes I-V

Refined and improved version of the best-selling Hydros SL.

- Large arbor
- Improved seal on the sealed carbon and stainless drag
- Reduced weight balances better with lighter-weight fly rods

Imported.

Size	Line wts.	Weight in oz.	Dia.	Item #	Reel Price	Item #	Spool Price	Dacron® Backing
HYDROS I	1-3	4.7	3.1"	QS2ZAS	\$198	QS2Z4C	\$98	20-lb. & WF2F: 75 yds.
HYDROS II	3-4	5.0	3.4"	QS2ZAT	\$219	QS2Z4E	\$109	20-lb. & WF4F: 125 yds.
HYDROS III	5-6	5.5	3.7"	QS2ZAY	\$239	QS2Z4F	\$119	20-lb. & WF6F: 125 yds.
HYDROS IV	7-8	6.6	4"	QS2ZAZ	\$259	QS2Z4G	\$129	20-lb. & WF8F: 200 yds.
HYDROS V	9-11	7.7	4.25"	QS2ZA0	\$279	QS2Z4H	\$139	30-lb. & WF10F: 225 yds.



Spey sizes IV
and V

sizes I-V



spool
side

IMMEDIATE DELIVERY

BATTENKILL DISC REEL | Sizes I through V

True to its heritage in looks and performance, but updated with the latest in design improvements.

- Mid-arbor design for faster line retrieve and less line coil
- Sealed drag system based on the Hydros®
- Spey sizes IV and V solid back frame and a full cage spool

Imported.

Size	Line Weights	Weight in oz.	Dia.	Item #	Reel Price	Spool Price	Dacron® Backing
BATTENKILL DISC I	1-3	4.4	2¾"	QS2JLR	\$149	\$59	20-lb. & WF2F: 75 yds.
BATTENKILL DISC II	3-5	4.6	3"	QS2JLS	\$159	\$69	20-lb. & WF4F: 125 yds.
BATTENKILL DISC III	5-7	4.9	3¼"	QS2JLT	\$169	\$69	20-lb. & WF6F: 100 yds.
BATTENKILL DISC IV	7-9	5.9	3½"	QS2JLX	\$179	\$79	20-lb. & WF8F: 200 yds.
BATTENKILL DISC IV SPEY	7-9	8.9	3¾"	QS2J7H	\$189	\$89	30-lb. & WF7F: 200 yds.
BATTENKILL DISC V SPEY	9-11	9.9	4"	QS2J7J	\$198	\$89	30-lb. & WF9F: 200 yds.



spool
side all
sizes



IMMEDIATE DELIVERY

BATTENKILL® REEL | Sizes I-III

Machined click and pawl drag designed to work in tandem with the palm of your hand.

- Larger spool diameter for higher line retrieval rates
- The ultralightweight I-III are perfect for shorter rods

Imported.

Size	Line wts.	Weight in oz.	Dia.	Item #	Reel Price	Spool Price	Dacron® Backing
BATTENKILL I	1-3	2.8	2¾"	QS7H9P	\$98	\$59	20-lb. & WF2F: 75 yds.
BATTENKILL II	3-5	2.9	3"	QS7H9R	\$109	\$69	20-lb. & WF4F: 75 yds.
BATTENKILL III	5-7	3.2	3¼"	QS7H9T	\$119	\$69	20-lb. & WF6F: 100 yds.



cassette
reel side



cassette
spool side



IMMEDIATE DELIVERY

CLEARWATER® REEL | Sizes II and IV

Updated new die-cast design with a stealthy matte-gray powder-coat finish.

- Inline, Rulon®-to-stainless, stacked disc drag
- Size IV Cassette comes with two spare cassette spools

Imported.

spool side



Size	Line wts.	Weight in oz.	Dia.	Item #	Reel Price	Spool Price	Dacron® Backing
CLEARWATER II	4-6	5.5	3¾"	QS2S53	\$89	\$49	20-lb. & WF5F: 100 yds.
CLEARWATER IV	7-9	6.3	3⅞"	QS2S54	\$98	\$49	20-lb. & WF8F: 200 yds.
CLEARWATER CASSETTE	7-9	6.9	3⅞"	QS2S59	\$129	\$9.95	20-lb. & WF7F: 100 yds.



NEW ORVIS
PRO
FLY LINE

**WICKED
SLICK** *70% slicker and
eight times more durable*

PRO SMOOTH LINES

MADE IN USA

		LINE WEIGHTS	LINE LENGTH	COLORS	ITEM #	PRICE
PRO TROUT		WF 3-8	90'	WILLOW TIP/OLIVE/PEACH	QS2S6C	\$98
PRO SALTWATER ALL-ROUNDER		WF 6-10	90'	IVORY TIP/HORIZON/MOSS	QS2S6F	\$98
PRO SALTWATER TROPIC		WF 6-12	90'	IVORY TIP/HORIZON/PEACH	QS2S6H	\$98
PRO DEPTH CHARGE TRIPLE DENSITY		150-550 GRAIN	90'	VARIES BY SIZE	QS2S6M	\$98
PRO POWER TAPER		WF 4-8	90'	WILLOW TIP/OLIVE/MOSS	QS2SK4	\$98








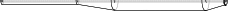






PRO TEXTURED LINES

MADE IN USA

		LINE WEIGHTS	LINE LENGTH	COLORS	ITEM #	PRICE
PRO TROUT		WF 3-6	90'	WILLOW TIP/OLIVE/MOSS	QS2SK2	\$129
PRO POWER TAPER		WF 4-8	90'	WILLOW TIP/OLIVE/MOSS	QS2SK3	\$129
PRO IGNITOR		WF 8-12	90'	IVORY TIP/HORIZON/PALE ORANGE	QS2SK5	\$129
PRO SALTWATER TROPIC		WF 6-12	90'	IVORY TIP/HORIZON/PEACH	QS2SK6	\$129
PRO SALTWATER ALL-ROUNDER		WF 6-10	90'	IVORY TIP/HORIZON/MOSS	QS2SK7	\$129





NEW HYDROS

MADE IN USA

			LINE WEIGHTS	LINE LENGTH	COLORS	ITEM #	PRICE
NEW	HYDROS TROUT		WF 3-8	90'	LT. OLIVE/ PEACH	QS2ZJ1	\$79
NEW	HYDROS SUPERFINE		WF 1-5	90'	DK. OLIVE/ WILLOW	QS2ZJ2	\$79
NEW	HYDROS TROUT DT		DT 3-5	90'	DK. OLIVE/ PALE YELLOW	QS2ZJ3	\$79
NEW	HYDROS SALTWATER		WF 6-10	90'	HORIZON/ SAND	QS2ZJ4	\$79
NEW	HYDROS SALTWATER BIG GAME		WF 9-12	90'	HORIZON/ MOSS	QS2ZJ5	\$79
NEW	HYDROS NYMPH		WF 5-8	90'	MOSS/ PEACH	QS2ZJ6	\$79
NEW	HYDROS WARMWATER		WF 6-9	90'	LT. OLIVE/ FLO ORANGE	QS2ZJ7	\$79
NEW	HYDROS SALMON/STEELHEAD		WF 7-10	90'	LT. OLIVE/ MOSS	QS21Z8	\$79
NEW	HYDROS TROPIC INTERMEDIATE		WF 7-10	90'	CLEAR/ SAND	QS2ZJ8	\$89
NEW	HYDROS COLDWATER INTERMEDIATE		WF 6-10	90'	CAMO/ MOSS	QS2ZJ9	\$89
NEW	HYDROS BANK SHOT FLOAT		WF 5-11	90'	WILLOW/ ORANGE	QS2ZKA	\$79
NEW	HYDROS BANK SHOT INTERMEDIATE		WF 5-11	90'	PALE GREEN/DK WILLOW/ORANGE	QS2ZKB	\$89
NEW	HYDROS BANK SHOT SINK		WF 5-11	90'	BLACK/OLIVE BRANCH/ORANGE	QS2ZKC	\$89
NEW	HYDROS TACTICAL NYMPH		DT 1	90'	WILLOW	QS22B1	\$59






NEW CLEARWATER

MADE IN USA

			LINE WEIGHTS	LINE LENGTH	COLORS	ITEM #	PRICE
NEW	CLEARWATER LINE		WF 3-9	90'	MOSS	QS2ZKE	\$49
NEW	CLEARWATER INTERMEDIATE SINKING LINE		WF 5-8	90'	PALE GREEN	QS2ZKF	\$59
NEW	CLEARWATER TYPE 3 SINKING LINE		WF 5-8	90'	DK. GREEN	QS2ZKG	\$59
NEW	CLEARWATER TYPE 6 SINKING LINE		WF 5-8	90'	DK. GRAY	QS2ZKH	\$59

NEW MISSION

MADE IN USA

			LINE WEIGHTS (GRAINS)	COLORS	ITEM #	PRICE
NEW	MISSION SKAGIT		230, 360, 420, 440, 480, 520, 560, 600, 640	OLIVE/ ORANGE	QS2SYZ	\$59
NEW	MISSION SCANDI		180, 300, 360, 390, 420, 450, 480, 510, 540, 565, 640	WILLOW/ ORANGE	QS2SY0	\$59
NEW	MISSION SHOOTING LINE		.025", .031", .038"	MOSS	QS2SY3	\$45
NEW	MISSION TEXTURED SPEY TIP KITS		80(8'), 120(10'), 160(12') EACH KIT WITH INT/S2 S3/S5, S7	VARIES	QS2ZEP	\$74.95
NEW	MISSION TEXTURED SPEY TIPS		80(8'), 120(10'), 160(12') AVAILABLE IN INT/S2, S3/S5, S7	VARIES	QS2TCA	\$25



IMMEDIATE DELIVERY - \$4.95

SUPERSTRONG™ PLUS NYLON

Superior wet knot strength—the perfect balance of strength, elasticity, and suppleness.

Imported.



IMMEDIATE DELIVERY - \$8.95

SUPERSTRONG PLUS LEADER 2 PACK

LENGTH	SIZE (SPECIFY WHEN ORDERING)		ITEM #
7½'	TROUT 0X-6X		QS2FCZ-61
	TROUT 0X-7X		QS2FCZ-62
9'	BIG GAME 16, 18, 20 LB. TEST		QS2FCZ-62
12'	TROUT 4X-6X		QS2FCZ-63

IMMEDIATE DELIVERY - \$4.95

SUPERSTRONG PLUS TIPPET 30M

QS2FCO trout 0X-8X lbs.
big game 20-65 lbs.

IMMEDIATE DELIVERY - \$14.95

SUPERSTRONG PLUS TIPPET 100M

QS2FFR trout 0X-7X lbs.

IMMEDIATE DELIVERY - \$12.95

SUPERSTRONG PLUS LEADER/TIPPET COMBO PACKS

Two 9' leaders and one 30m spool of tippet in matching diameter. In 3X-6X.

QS2HBM SuperStrong Plus Combo Pack

SuperStrong Plus Tippet Strength Comparison

Size	8X	7X	6X	5X	4X	3X	2X	1X	0X	20lb	25lb	35lb	40lb	50lb	60lb	65lb
Diameter (in.)	.003	.004	.005	.006	.007	.008	.009	.010	.011	.013	.015	.017	.019	.023	.025	.027



IMMEDIATE DELIVERY - \$14.95

MIRAGE FLUOROCARBON

Superior abrasion resistance and almost identical to the refractory index of water

Imported.



IMMEDIATE DELIVERY - \$24.95

MIRAGE KNOTLESS LEADER 2 PACK

LENGTH	SIZE (SPECIFY WHEN ORDERING)		ITEM #
9'	TROUT 0X-6X		QS2A04
	BIG GAME 8, 10, 12, 16, 20 LB. TEST		QS2A23

IMMEDIATE DELIVERY

MIRAGE TIPPET MATERIAL 30M

QS2FFL trout 0X-7X **\$14.95**
big game 8-20 **\$14.95**
QS22PB-61 big game 25-60 **\$24.95**

IMMEDIATE DELIVERY - \$44.95

MIRAGE TIPPET MATERIAL 100M

QS2FFP trout 0X-7X

IMMEDIATE DELIVERY - \$38.95

MIRAGE LEADER/TIPPET COMBO PACK

Two 9' leaders and one 30m spool of tippet in matching diameter. In 3X-6X.

QS2HBN Mirage Combo Pack

Mirage Tippet Strength Comparison

Size	7X	6X	5X	4X	3X	2X	1X	0X	6lb	8lb	12lb	16lb	20lb	25lb	30lb	35lb	40lb	50lb	60lb
Diameter (in.)	.004	.005	.006	.007	.008	.009	.010	.011	.007	.009	.011	.013	.015	.017	.019	.021	.023	.025	.030
Break Strength (lbs.)	2.0	3.0	4.1	5.5	7.1	8.7	10.7	13.2	6.0	8.0	12.0	16.0	20.0	25	30	35	40	50	60



QS8X17 - IMMEDIATE DELIVERY - \$19.95

FLOATING BRAIDED LEADER SYSTEM | 7.5' in 3X-5X, 9' in 4X-7X(light), 9' in 4X-6X(heavy).

Four times as supple as solid monofilament and impregnated with a water-repellent formula.

- One leader and five 5' Bimini tippets on a spool

Imported.



QS1R5G - 7' TROUT \$11.95

QS1R5K - 10' SALMON \$14.95

IMMEDIATE DELIVERY

ORVIS 7' TROUT AND 10' SALMON POLYLEADER

4 densities : (00) Clear Floating, (02) Intermediate Sinking 1.5"/sec., (04) Fast Sink 3.9"/sec., (06) Super Fast Sink 6.1"/sec.

Sink faster and cast better than other sink-tip leaders.

Imported.

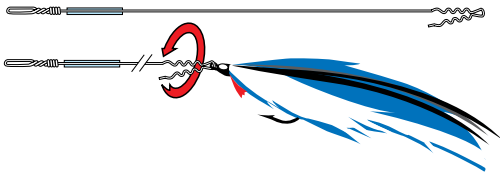


QS1R5L - IMMEDIATE DELIVERY - \$21.95

TITANIUM PREDATOR 7' POLYLEADER | 7' intermediate leader with 9" bite guard.

Titanium wire bite guard with swivel and snap link for quick, easy fly attachment.

Imported.



QS1578 - IMMEDIATE DELIVERY - \$15.95

HAYWIRE BITE GUARDS | 6 per pack, 4/38, 4/58, 8/38, 8/58

For bluefish, barracuda, and pike.

Imported.



QS2YA5 - JULY DELIVERY - \$11.95

TACTICAL NYMPH LEADER

Innovative 13', 3X leader uses color to allow the angler to see and follow the leader when nymphing.

- The last 2' of the leader is a tri-color
- Finished with a 2mm tippet ring
- 8¾ lb. breaking strength

Nylon. Imported.



QS2MXG - IMMEDIATE DELIVERY - \$9.99

TACTICAL SIGHTER TIPPET

A .011 tippet material equivalent to 0X, ideal for Euro-style nymphing technique.

- Chartreuse, orange, and white tricolor offers improved visibility

Nylon. Imported.

ORVIS®
WATERPROOF PACKS

/ SLING, HIP, AND BACKPACK

gray
2HNX09



QS2HNX - IMMEDIATE DELIVERY - \$229

ORVIS WATERPROOF SLING PACK

19"L x 11"W x 6"D. 854 cubic in

TPU-coated 500D nylon. YKK® Flexseal zipper.

Nylon. Imported.

gray
2HNZ09



QS2HNZ - IMMEDIATE DELIVERY - \$229

ORVIS WATERPROOF HIP PACK

8½"H x 12"W x 5"D 7L/427 cubic in.

Puts the weight on your hips leaving your upper body free.

Nylon. Imported

gray
2HNY09



QS2HNY - IMMEDIATE DELIVERY - \$298

ORVIS WATERPROOF BACKPACK

20"L x 12"W x 5"D 1282 cubic in.

Updated and improved backpack with a great new look.

Nylon. Imported.

gray
2HN009



QS2HN0 - FEBRUARY DELIVERY - \$279

NEW ORVIS LARGE BOAT BAG

10½" D x 22½" L x 11 ½" W. 32 L / 1952 cubic in.

Protect all your gear and electronics with easy customization.

Nylon. Imported.



day pack in
olive/gray
14ZG21

QS14ZG - IMMEDIATE DELIVERY - \$169

SAFE PASSAGE ANGLER'S DAY PACK

10½" x 8⅝" x 20⅞"; 1,831 cu. in., 3 lb.

Full-featured fishing backpack compatible with the Chip Pack (14ZK).

Nylon. Imported.



sling pack
in olive/gray
14ZF21

brown
camo
14ZF02

Fishe®
Wear
14ZF35

guide in
brown
camo
14ZH02

guide in
olive/gray
14ZH21

IMMEDIATE DELIVERY

SAFE PASSAGE SLING PACKS

QS14ZH Guide 11" x 7½" x 19¾". 1,391 cu. in. Weight: 1 lb. 5 oz. \$129

QS14ZF Regular 9" x 5" x 15¾". 641 cu. in. Weight: 1 lb. \$89

Our best-selling Sling Packs in two versions.

Nylon. Camo, Fishe®Wear in polyester. Imported.

ORVIS®

SAFE PASSAGE

/ HIP PACK, ROD AND REEL CASES, TOTES, SLINGS

olive/gray
14ZJ21



NEW—
Fishe®Wear
available in
March
14ZJ35

olive/gray
14ZK21



QS14ZJ - IMMEDIATE DELIVERY - \$109

SAFE PASSAGE HIP PACK

10¼" x 6⅓" x 8¾"; 732 cu. in., 1 lb. 4 oz.

Hip pack frees upper body for fishing. Neck strap included.

Nylon. Camo in polyester. Imported.

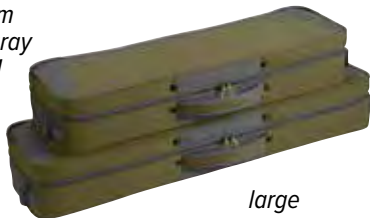
QF14ZK - IMMEDIATE DELIVERY - \$79

SAFE PASSAGE CHIP PACK | 5" x 6" x 9½". 312 cu. in.

Midsized pack can be worn as chest or hip pack. Straps included.

Nylon. Imported.

medium
olive/gray
14ZX21



large

brown camo
14ZX02



Fishe®Wear available
in March 14ZX35



QS14ZX - IMMEDIATE DELIVERY - \$198

SAFE PASSAGE® CARRY-IT-ALL

Medium: 31" x 5½" x 8¾", to 9' 4-piece rod.

Large: 36¾" x 5½" x 8¾", up to 11' 4-piece rod

Designed for the traveling angler to carry rods reels and other gear.

Nylon. Camo, Fishe®Wear in polyester. Imported.

QS2BAS - IMMEDIATE DELIVERY - \$8.95

SAFE PASSAGE® CARRY IT ALL EXTRA DIVIDERS

Two short, two long.

olive/gray
2BMM21



olive/gray
2BRB21

IMMEDIATE DELIVERY

SAFE PASSAGE® ROD/REEL CASES

QS2BRB 34½" long. Top dimension: single 7" D x 4" W \$65

QS22N9 34½" long. Top dimension: double 7"D x 7½" W \$85

The best protection available holds up to a 10' four-piece rod.

Nylon. Imported.

olive/gray
2ALZ21



QS2ALZ - IMMEDIATE DELIVERY - \$49

SAFE PASSAGE WADER TOTE

13¾"H x 18"L x 10"W, 2,900 cu. in., 13 oz.

Rubber mesh side panels allow for maximum ventilation.

Nylon. Imported.

QS2BMM - IMMEDIATE DELIVERY - \$14.95

SAFE PASSAGE® REEL CASES

Small sizes I-III, Medium sizes III-V, Large sizes V-VII

Nylon. Imported.

brown camo
2YRS02



QS2YRS - IMMEDIATE DELIVERY - \$39.95

SAFE PASSAGE® CAMO WADER TOTE

The perfect tote to carry waders and boots.

Polyester. Imported.

NEW

ORVIS
PRO Wading System / *Men's and Women's*



*Men's
olive/brown
2JM321*



*Women's dragonfly/ash
2LZ609*



*Men's black/ash
2JM310*

QS2JM3 - SEPTEMBER DELIVERY - \$349

MEN'S AND WOMEN'S PRO WADING JACKET

QS2JM3 Men's sizes **S-XXL**

QS2LZ6 Women's sizes **XS-XL**

No compromise, guide-class, full-featured wading jacket.

- Waterproof and breathable with fully taped seams
- Integrated Dolphin Skin Cuff system for additional water resistance
- YKK AquaGuard® water-resistant zippers
- Three-way adjustable hood with laminated brim
- 20K Waterproofness / 15K Breathability rating

Polyester with PU lamination. Washable. Imported.



*shadow
2MXC09*



Rear pockets offer a large pass-through game-style pocket and a full-zip rear pocket with mesh panel divider

QS2MXC - IMMEDIATE DELIVERY - \$198

ORVIS PRO VEST | **Sizes M-XXL**

The Orvis PRO Vest brings vest design into the 21st century with modern ergonomics, materials, and innovative features.

- Lofted spacer mesh cushions load
- 18 pockets—10 exterior, 6 interior, and 2 rear
- Two lower main pockets with compression-molded construction that add rigidity
- Upper pockets both with Orvis custom hideaway tool port
- Adjustable closure that slides vertically for a custom fit

Shell: Nylon. Collar and lower pocket: 85% nylon/15% spandex. Upper interior mesh: 100% polyester. Lower interior mesh: 85% nylon/15% spandex. Molded pocket base: compression-molded EVA.

Nylon/polyester/spandex. Washable. Imported.

SEPTEMBER DELIVERY - \$498

NEW MEN'S AND WOMEN'S PRO WADERS

QS2RY7 Men's 14 sizes S-XXL including short and long

QS2YRX Women's 14 sizes XS-XL including petite an tall

Orvis exclusive CORDURA® Nylon shell fabric. Body mapped with 5 layers in the legs and 4 layers in the body.

- Removable Ortholite® X25 foam knee pads
- PU-reinforced mesh gravel guards reduce water collection
- Detachable, flip-out accessory organizer with 2 zippered pockets and daisy chain
- Anatomically correct neoprene booties
- Athletic fit for exceptional mobility

Nylon shell with polyurethane membrane. Nylon tricot liner. Imported.



Men's
shadow
2RY789

Women's
shadow
2YRX89

SOLES
BY



QS2P9M - IMMEDIATE DELIVERY - \$229

PRO WADING BOOT | Men's whole sizes 7-14

An industry-first collaborative effort with Michelin, built on a sole compound specifically designed for fly fishing.

- Michelin Outdoor Extreme outsole
- 25% better abrasion resistance and 43% improvement in wet traction
- Lug pattern reduces shock
- Shock-absorbing Phylon midsole
- OrthoLite® 3D molded X25 insole
- Industry-first PU-casting construction eliminates seams in high-wear areas
- Oversized heel pull facilitates easier on-and-off

Imported.

shadow
2P9M10



ORVIS[®] ULTRALIGHT JACKET / MEN'S AND WOMEN'S



men's
2MLC42
burnt orange/ash



men's
2MLC31
alloy/ash



women's
2MLE19
typhoon



women's
2MLE15
harvest

QS2MLC - IMMEDIATE DELIVERY

\$249

MEN'S ULTRALIGHT WADING JACKET | Men's sizes S-XXL

QS2MLE - SEPTEMBER DELIVERY

\$249

NEW WOMEN'S ULTRALIGHT WADING JACKET | Women's sizes XS-XL

Solid, but lightweight, fully-featured protection against wind and rain that can be carried in a small daypack or even the Guide Sling Pack.

Nylon with PU lamination. Washable. Imported.



storm gray
2MXB09

large rear zipper pocket



tri-ring net holder on the upper back

S2MXB - IMMEDIATE DELIVERY - \$139

ULTRALIGHT VEST | Sizes S-XXL

modern, sleek, and functional vest design that integrates perfectly with the concept of the Ultralight Wading System.

11 pockets, 6 exterior, 4 interior, and 1 rear

Lightweight material, treated with DWR

Hide a port for zinger and forceps

Adjustable closure vertically to the most comfortable position

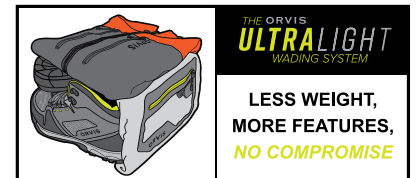
Shell: Nylon. Collar: Polyester/spandex. Mesh: Poly/spandex. Imported

ORVIS[®] ULTRALIGHT WADERS / MEN'S AND WOMEN'S

men's
2JBY89
storm



women's
2JBZ89
storm



Waders, Boots & Jacket - Less than 6 lbs and 1 ft³

IMMEDIATE DELIVERY - \$298

MEN'S AND WOMEN'S ULTRALIGHT CONVERTIBLE WADER

QS2JBY men's in 14 sizes S-XXL including short and long

QS2JBZ women's in 16 sizes: XS-XXL including petite and tall

The Ultralight Convertible is a versatile, innovative wader in a lightweight package without sacrificing durability. Modern fit offers superior performance without the traditional weight and bulk.

- FIDLOCK[®] SNAP magnetic fasteners for quick and effortless waist-high conversion
- Rubberized tabs on suspenders and pocket for tool docking
- Streamlined neoprene gravel guard

Outer shell: Nylon. Membrane: Polyurethane. Liner: Nylon tricot. Imported.



men's
2J2R09
cobblestone/citron



women's
2J2S09
cobblestone/dragonfly

IMMEDIATE DELIVERY - \$169

MEN'S AND WOMEN'S ULTRALIGHT BOOTS

QS2J2R Men's whole sizes 7-14

QS2J2S Women's whole sizes 6-11

Lightweight without compromise to performance and durability.

- Men's weighs 40 oz. (size 10)
- Women's weighs 37 oz. (size 8)
- Quick-drying Clarino[™] microfiber upper
- Dual durometer Vibram[®] outsole with proprietary Orvis lug pattern

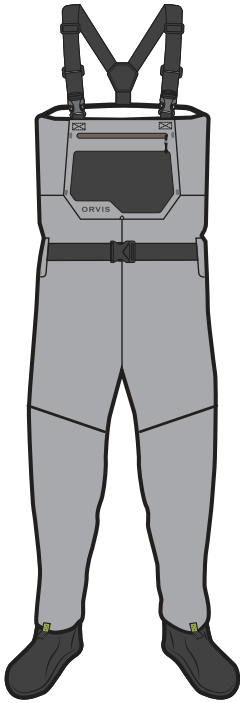
Nylon microfiber with PU coating. Polyester mesh. Imported.



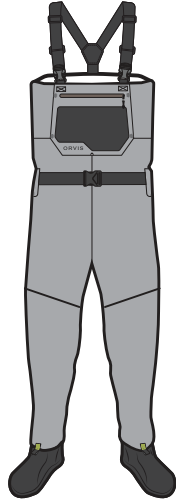
Waders, Boots & Jacket - Less than 6 lbs and 1 ft³

NEW

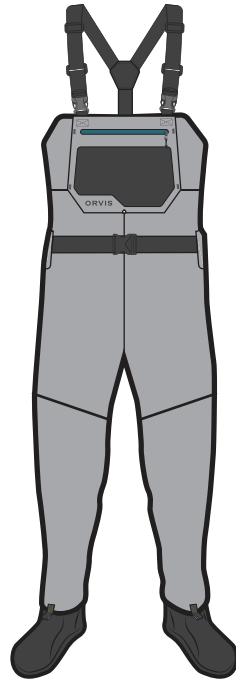
ORVIS[®] **CLEARWATER WADING SYSTEM**



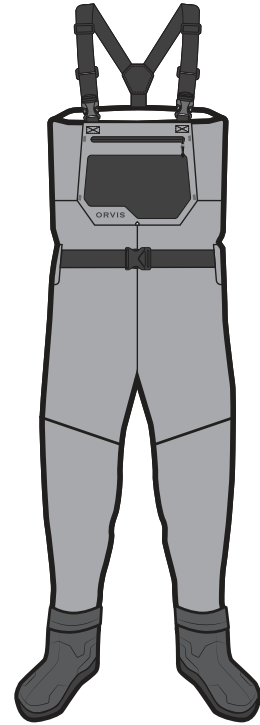
men's in stone
2TZX09



kid's in stone
2TZ009



women's in stone
2TZY09



bootfoot in stone
2TZZ

FEBRUARY DELIVERY

NEW CLEARWATER WADERS

QS2TZX men's in 14 sizes S-XXL including short and long \$198

QS2TZY women's in 16 sizes XS-XXL including tall and petite \$198

QS2TZ0 kid's in sizes S, M, L \$179

QS2TZZ bootfoot in 13 total sizes, M-XXL, boot sizes 8-14 \$298

New and updated and still the best value-priced wader on the market.
Modern fit eliminates traditional wader bulk.

- * Four-layer waterproof breathable nylon fabric
- Opposing side-release buckles allow for waist-high conversion
- External storage pocket with stretch panel
- Kangaroo-style handwarmer pocket
- Updated anatomical neoprene booties
- Integrated neoprene gravel guards

Nylon shell / polyurethane membrane / nylon tricot liner. Washable. Imported.

FEBRUARY DELIVERY - \$198

NEW MEN'S CLEARWATER WADING JACKET

QS2TZ1 Sizes S-XXL

An exceptional value in a full-featured wading jacket, with premium features at an entry-level price.

- 20K Waterproofness and 15K Breathability rating
- Three-layer nylon shell fabric with fully-taped seams
- YKK® AquaGuard® water-resistant front closure
- Two large front storage pockets and two handwarmer pockets
- Integrated Dolphin Skin cuff system
- Three-way adjustable storm hood with laminated brim

Nylon shell / polyurethane membrane / nylon tricot liner. Washable. Imported.

*falcon
2TZ102*



*men's felt
sole in gravel
2RAA09*



*women's felt
sole in gravel
2RAC09*



*men's rubber sole in
gravel 2P9209*



FEBRUARY DELIVERY - \$139

NEW MEN'S AND WOMEN'S CLEARWATER WADING BOOT

QS2P92 men's rubber sole Sizes 7-15.

QS2RAA men's felt sole

QS2RAB women's rubber sole Sizes 6-11

QS2RAC women's felt sole

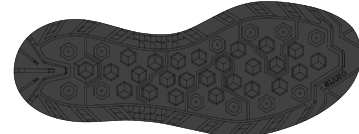
A complete upgrade of the best-selling Clearwater wading boot.

- Full synthetic leather upper
- Scratch rubber toe, vamp, and heel counter
- Heavy-duty rubber toe bumper
- Integrated EVA foam footbed
- Phylon midsole and ESS plate for stability

Synthetic leather upper. Imported.



*women's rubber sole in
gravel 2RAB09*



MEN'S STOCKINGFOOT WADER SIZES

Wader size	Chest*	Pant inseam up to:	Bootie range (US sizing)
Small	34-36	28-30	7-9
Medium/Short	38-40	28-30	8-10
Medium	38-40	30-32	9-11
Medium/Long	38-40	32-34	10-12
Large/Short	42-44	28-30	9-11
Large	42-44	30-32	10-12
Large/Long	42-44	32-34	11-13
Large/XLong	42-44	34-36	12-14
XL/Short	46-48	28-30	10-12
XL	46-48	30-32	10-12
XL/Long	46-48	32-34	11-13
XL/XLong	46-48	34-36	12-14
XXL/Short	50-52	28-30	11-13
XXL	50-52	30-32	11-13

*or largest girth

WOMEN'S STOCKINGFOOT WADER SIZES

Wader size	Body size	Bust*	Waist*	Hip*	Pant inseam up to:	Bootie range (US sizing)
X-Sm. Petite	2-4	33½-34½	25½-26½	35½-36½	30	5-7
X-Sm. Reg.	2-4	33½-34½	25½-26½	35½-36½	32	5-7
Sm. Petite	6-8	35½-36½	27½-28½	37½-38½	30	6-8
Sm. Reg.	6-8	35½-36½	27½-28½	37½-38½	32	6-8
Sm. Tall	6-8	35½-36½	27½-28½	37½-38½	34	7-9
Med. Petite	10-12	37½-39	29½-31	39½-41	30	7-9
Med. Reg.	10-12	37½-39	29½-31	39½-41	32	7-9
Med. Tall	10-12	37½-39	29½-31	39½-41	34	8-10
Lg. Petite	14-16	40½-42	32½- 34	42½-44	30	7-9
Lg. Reg.	14-16	40½-42	32½- 34	42½-44	32	7-9
Lg. Tall	14-16	40½-42	32½- 34	42½-44	34	9-11
XL Petite	18-20	44-46	36-38	46-48	30	8-10
XL Reg.	18-20	44-46	36-38	46-48	32	8-10
XL Tall	18-20	44-46	36-38	46-48	34	9-11
XXL Petite**	22-24	48-50	40-42	50-52	30	9-11
XXL Reg.**	22-24	48-50	40-42	50-52	32	9-11

*or largest girth **Available only in Ultralight and Clearwater waders

KIDS' STOCKINGFOOT WADER SIZES

Wader size	Chest*	Height range	Pant inseam up to:	Bootfoot size (US sizing)
S	24-27	48"-52"	21-23	4-6
M	28-30	53"-58"	24-26	5-7
L	31-33	59"-63"	27-29	6-8

*or largest girth

MEN'S BOOTFOOT WADER SIZES

Wader size	Chest*	Height range	Weight range	Pant inseam up to:	Bootfoot size (US sizing)
M	38-40	5'7"-5'10"	140-180	30-32	8-10
L	42-44	5'11"-6'2"	180-220	32-34	9-12
XL	46-48	6'1"-6'4"	210-240	34-36	11-13
XXL	50-52	6'2"-6'5"	220-260	36-38	12-14

*or largest girth

WADER SIZING CHARTS ALSO AVAILABLE
ON [ORVIS.COM/WADERCHART](https://www.orvis.com/waderchart)

IMMEDIATE DELIVERY

ENCOUNTER JACKET & PANT

QS2CLO jacket Sizes S-XXL \$119

QS2JJN pants Sizes S-XXL \$98

Easily packable, waterproof, and breathable at an exceptional entry-level price.

- 2.5-layer fabric
- Adjustable hood
- YKK® waterproof zippers
- Adjustable cuffs and waist drawcord
- Pants with knee-length zipper
- Elastic waistband with drawcord
- Rear zip pocket

Nylon. Washable. Imported.

ash
2JJN09



sage/multi
2CLO18



black
2CLO10



QS9T1G - IMMEDIATE DELIVERY - \$32.95

POSIGRIP SCREW-IN STUDS | 24 per package

Exclusive tungsten-carbide tips easily inserted in felt or rubber soles with included drill adapter.

MADE IN USA

QS8G3H - IMMEDIATE DELIVERY - \$11.95

WATERPROOF POCKET | 7½" x 7½"

Keep electronics and valuables safe from water damage. Ziploc-style closure and hook-and-loop strip for attachment to waders. Touchscreen compatible.

Imported.

9T1G10



8G3H00



waterproof pocket



moss
2J7K08



pewter
2J7K09



cobalt
2J7K05



citron
2J7K14



pewter
2J7L60

QS2J7K - IMMEDIATE DELIVERY - \$79

ORVIS NIPPERS

Patented piano-style hinge for easily cutting 80 lb. to 8X.

Made in USA.

QS2J7L - IMMEDIATE DELIVERY - \$249

ORVIS PLIERS

Ergonomically designed of machined aluminum. Leather sheath.

Made in USA.



2BT100

THE 8 ESSENTIALS



8 GUIDE ORIGINALS



QS2BT1 - IMMEDIATE DELIVERY - \$198

ORVIS PREMIUM FLY-TYING KIT

Materials, tools, and DVD to tie 10 each of 16 patterns.

Made in USA.



2BT200

QS2BT2 - IMMEDIATE DELIVERY - \$98

ENCOUNTER FLYTYING KIT

All materials and tools to tie 10 each of eight basic patterns.

Made in USA.



black
2S5B10

QS2S5B - IMMEDIATE DELIVERY - \$29.95

FLOW NIPPER

Machined grooves for a better grip. Superior cutting edge.

Imported.



2ZSF

QS2ZSF Orvis loaded lanyard - FEBRUARY DELIVERY - \$98

QS22LN-09 Orvis lanyard - FEBRUARY DELIVERY - \$49

NEW ORVIS LANYARDS

Newly designed lanyard with exceptional workflow features. Loaded lanyard includes: Comfy Grip Forceps, Comfy Grip Nippers, Tippet Bar, 3 Spools of SS+ Tippet, Hy-Gel Floatant, Floatant Holder.

Imported.



storm gray
2S4809

QS2S48 - IMMEDIATE DELIVERY - \$20.95

MITTEN CLAMP | 6"L

Double-dipped Comfy Grip handle. Built-in scissors. Hook-eye needle.

Imported.



citron
2TB814

QS2TB8 - IMMEDIATE DELIVERY - \$29.95

NET MAGNET

Ultra-strong magnets. Heavy-duty hook-and-loop strap. Upgraded bungee and split ring clips.

Imported.



citron
2S5G14

storm gray
2S5G09

QS2S5G - IMMEDIATE DELIVERY - \$9.95

COMFY GRIP NIPPERS

Comfy Grip for easier grip. Durable cutting edge. Hook-eye needle.

Imported.



citron
2S5C14

storm gray
2S5C09

QS2S5C - IMMEDIATE DELIVERY - \$15.95

COMFY GRIP FORCEPS | 5½"L

Comfy Grip handles. Locking handles. Half-smooth/serrated jaw.

Imported.



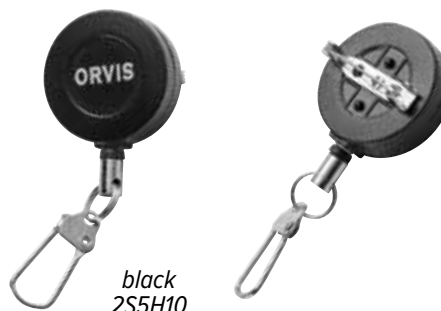
storm gray
2SY509

QS2SY5 - IMMEDIATE DELIVERY - \$24.95

QUICKDRAW FORCEPS | 6¼"L

Over-sized thumb and finger holes. Compact cutting edge. Flat geometric jaw. Comfy Grip double-dipped handle.

Imported.



black
2S5H10

QS2S5H - IMMEDIATE DELIVERY - \$10.95

ZINGER | 20" cable

Retractable coated steel cable. Heavy duty pin fastener.

Imported.



black
2TB910

QS2TB9 - IMMEDIATE DELIVERY - \$7.95

LEADER STRAIGHTENER

Leather exterior with rubber interior for straightening leaders

Imported.



storm gray
2XHJ09

QS2XHJ - IMMEDIATE DELIVERY - \$31.95

COMFY GRIP KIT

Includes the Comfy Grip Forceps, Nipper, and Zinger.

Imported.



storm gray
2XHK09

QS2XHK - IMMEDIATE DELIVERY - \$19.95

COMFY GRIP NIPPER AND ZINGER COMBO

Comfy Grip Nipper. Durable zinger with 20" cable.

Imported.



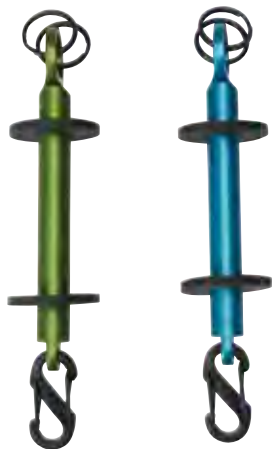
storm gray
2XHN09

QS2XHN - IMMEDIATE DELIVERY - \$19.95

SCISSOR FORCEPS | 5½"L

Double-dipped Comfy Grip. Locking handles. Half smooth/serrated jaw. Scissors. Hook-eye needle.

Imported.



pine
2PT108

tidal blue
2PT105

QS2PT1 - IMMEDIATE DELIVERY - \$24.95

ORVIS TIPPET TOOL

Holds seven spools of tippet. Attach by carabiner clip or rings.

Made in USA.



black
4P4Y01

QS4P4Y - IMMEDIATE DELIVERY - \$14.95

GEAR KEEPER SUPER ZINGER

50-lb. Spectra cord. 3-foot reach. Saltwater resistant.

Imported.



clip-on
8P4102

pin-on
8P4101

QS8P41 - IMMEDIATE DELIVERY - \$12.95

BLACK NICKEL ZINGER

Premium zinger with black nickel finish and full metal construction. 22" wire cord. Clip-on and pin-on.

Imported.



green
2RY508

QS2RY5 - IMMEDIATE DELIVERY - \$11.95

ENCASED STREAM THERMOMETER | 4½"L

Encased and protected stream thermometer. Key ring attachment clips to a zinger.

Imported.



black
2ANB01

QS2ANB - IMMEDIATE DELIVERY - \$6.95

TIPPET BAR

Holds up to seven Orvis tippet spools.

Imported.



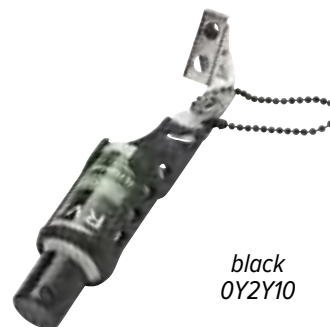
1A7G02

QS1A7G - IMMEDIATE DELIVERY - \$24.95

FLOATANT PACK

Keep gel and renew floatants (included) in one handy pack. Swivel clip attach.

Made in USA.



black
0Y2Y10

QS0Y2Y - IMMEDIATE DELIVERY - \$16.95

ALUMINUM FLOATANT HOLDER

Lightweight and strong aluminum.

Made in USA.



charcoal
2N7M00

QS2N7M - IMMEDIATE DELIVERY - \$13.95

NON-TOXIC TUNGSTEN SINK PUTTY

Non-toxic, tungsten-based. Biodegradable and reusable alternative to lead-based weight.

Imported.



black
2ZAG10
2ZAH10
2ZSE10

IMMEDIATE DELIVERY - RETAIL PRICE

NON-TOXIC SPLIT SHOT

QS2ZAG ORVIS NON-TOXIC SPLITSHOT

Sizes: #6(.1g), #4(.2g), #1(.3g), #BB(.4g), #AB(.6g) \$8.95

QS2ZAH 4 ASSORTMENT

Sizes: #6(.1g) #4(.2g) #1(.3g) #BB(.4g) \$12.95

QS2ZSE 6 ASSORTMENT

Sizes: #4(.2g), #BB(.4g) #AB(.6g) AAA(.8g), SA(1.2g), SSG(1.6g) \$17.95

Non-toxic, tin weights. Durable matte finish. Double-cut reusable.

Imported.



9X6X01

IMMEDIATE DELIVERY

COMPLETE HY-FLOTE™ SYSTEM

QS9X6X-01 Complete Hy-Flote System \$22.95

QS9X6X-02 Hy-Flote Gel \$5.95

QS9X6X-03 Leader/Tippet/Indicator Paste \$5.95

QS9X6X-04 Shake-N-Flote Renew \$7.95

QS9X6X-05 Hy-Flote Powder Dust \$5.95

All-in-one kit. Premium gel, paste, powder, and fly dryer.

Made in USA.



2MXG60

QS2MXG - IMMEDIATE DELIVERY - \$9.99

TACTICAL SIGHTER TIPPET

A .011 tricolor tippet material equivalent to 0X, ideal for Euro-style nymphing.

Nylon. Imported.



6A21

IMMEDIATE DELIVERY

JAM-STOP THINGAMABOBBER

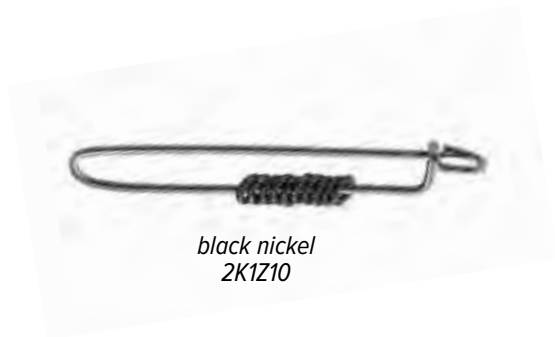
QS6A21-00 9-piece assortment \$14.95

QS6A21-51 1/2" 5-pack \$6.95

QS6A21-52 3/4" 5-pack \$6.95

Highly visible, ultra sensitive, casts well, easy to attach and adjust.

Imported.



black nickel
2K1Z10

QS2K1Z - IMMEDIATE DELIVERY - \$8.95

TIPPET RINGS | S(5/64" 2mm 17lb. test), M(3/32" 2.5mm 26 lb. test), L(1/8" 3.1mm 35 lb. test)

Fast and easy system for changing tippet, allows significantly different tippet diameter than leader.

Imported.



1/2"
2MC751

3/4"
2MC752

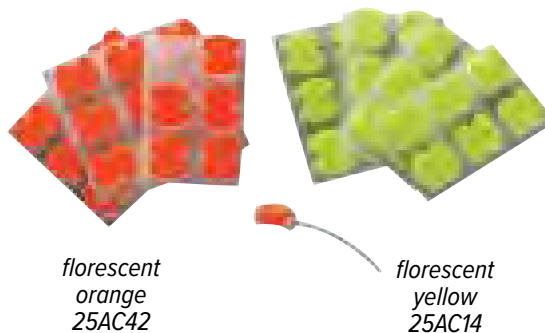
1"
2MC753

QS2MC7 - IMMEDIATE DELIVERY - \$7.99

AIR LOCK INDICATOR | Sizes 1/2", 3/4" 1"

Super-buoyant, visible, durable, and easy to adjust.

Imported.



fluorescent
orange
25AC42

fluorescent
yellow
25AC14

QS25AC - IMMEDIATE DELIVERY - \$4.95

STICK-ON OVAL INDICATORS

24 ovals per package.

Made in USA.



8P4H01

QS8P4H - IMMEDIATE DELIVERY - \$16.95

NEW ZEALAND STRIKE INDICATOR

Includes applicator tool, a sampling of white and chartreuse wool, and 12" of size small replacement tubing

Imported.



black
2C3110

QS2C31 - IMMEDIATE DELIVERY - \$9.95
POLYLEADER/SHOOTING HEAD WALLET | 4½"

All-mesh wallet with five slots.

Imported.



126900

QS1269 - IMMEDIATE DELIVERY - \$19.95
FLIP FOCAL | 2.25X magnification

Clips to the brim of your hat and flips easily out of the way.

Made in USA.



IMMEDIATE DELIVERY

TY WHEEL Wheel in black nickel

QS2K1F-00 10" diameter with components, 7¼" without \$150

QS2K1F-10 extension in silver \$30

New and innovative solution to fly tying that takes up little room, but offers big features.

- Fits on the stem of your vise
- Four removable attachments
- Attachments include: trash bin, tool slots, three shallow trays to hold hooks and beads
- Five metal posts store thread and wire spools vertically or horizontally

Made in USA.



ty wheel
2K1F00



extension
2K1F10



IMMEDIATE DELIVERY

SOFT SHELL FINGERLESS AND FOLDOVER GLOVE

QS8L07 fingerless glove **S(6-6½), M(7), L(7½), XL(8-8½)** \$34.95

QS8L08 foldover glove **S(6-6½), M(7), L(7½), XL(8-8½)** \$39.95

Windproof, highly water resistant, softshell exterior, fleece lined with silicon pattern on the palm.

Nylon/polyester. Washable. Imported



black
8L0710

black
8L0810

IMMEDIATE DELIVERY

FLEECE FINGERLESS FOLDOVER GLOVE AND FINGERLESS GLOVE

QS33PP fingerless glove **S(6-6½), M(7), L(7½), XL(8-8½)** \$24.95

QS33P4 foldover glove **S(6-6½), M(7), L(7½), XL(8-8½)** \$29.95

Windproof, polyfleece with embossed polyurethane palm for sure grip.

Polyester. Washable. Imported.



black
33PP10

black
33P410

QS2BN2 - IMMEDIATE DELIVERY - \$29.95

ORVIS SUN GLOVE | **S(6-6½), M(7), L(7½), XL(8-8½)**

UPF 50+ protects fingers and extended cuff protects wrist.

Lycra®/polyurethane. Washable. Imported.



light gray
2BN209

QS6G26 - IMMEDIATE DELIVERY - \$24.95

FISH TAILER LANDING GLOVE | **One size fits all**

Ambidextrous. Protects outer slime layer on fish.

Polyester/nylon. Washable. Imported.



black
6G2600

ORVIS[®] FLY BOXES / ULTRALIGHT FOAM

medium in citron
2M925208

large in citron
2M925308



medium in storm gray
2M925209

large in storm gray
2M925309



IMMEDIATE DELIVERY

ULTRALIGHT FOAM FLY BOX

QS2M92-52 medium is 5"L x 3¼"W x 1⅝"D \$18.95

QS2M92-53 large is 6"L x 3½"W x 1¼"D \$21.95

Ultralight box of molded foam with micro slits. Secure magnetic closure.

Italy.

small in clear
2YHL5161

medium in clear
2YHL5261

large in clear
2YHL5361



IMMEDIATE DELIVERY

DOUBLE-SIDED FLY BOX

QS2YHL-51 small is 5" L x 3¾" W x 1½" D, holds 160 flies \$17.95

QS2YHL-52 medium is 6¼" L x 3¾" W x 1½" D, holds 204 flies \$19.95

QS2YHL-53 Large is 7¾" L x 4½" W x 1⅝" D, holds 378 flies \$22.95

Microslit foam, clear shell, sealed closure with latch.

Imported.



big bug
186N07



regular
186N00



day pack
186N05



dry fly
186N09

IMMEDIATE DELIVERY

TACKY FLY BOX

QS186N-00 regular—7" x 3½" x ⅝", holds 168 flies \$24.95

QS186N-05 day pack—5" x 3" x ⅝", holds 72 flies \$20

QS186N-07 big bug—7" x 3½" x 1", holds 72 flies \$31.95

QS186N-09 dry fly—7" x 3½" x 1", holds 192 flies \$30

Silicone sheets with tear-drop cutout slits, clear polycarbonate body, and magnetic closure.

Polycarbonate/silicone. Imported.



shirt-pocket
4Y61

vest
4Y62

large
2XK5

IMMEDIATE DELIVERY - RETAIL PRICE

SUPER-SLIM FLY BOXES

QS4Y61 shirt pocket box: 3"L x 4⅜"W x ½"D; holds 77 flies; foam 01 or magnetic base 02 \$10.95

QS4Y62 vest pocket box: 5"L x 3⅞"W x ½"D; holds 120 flies; foam 01 or magnetic base 02 \$10.95

QS2X5K large: 7⅜"L x 3⅞"W x ½"D; holds 168 flies \$15.95

Perfect box for micro flies and midges in magnetic compartment or foam slits.

Imported.



small
2L9G51 *medium*
2L9G52 *large*
2L9G53

IMMEDIATE DELIVERY

POSIGRIP FLIP PAGE FLY BOX

QS2L9G-51 small holds 278 flies: 47/8"L x 33/4"W x 11/4"D \$18.95

QS2L9G-52 medium holds 474 flies: 6"L x 35/8"W x 11/2"D \$21.95

QS2L9G-53 large holds 576 flies: 71/2"L x 4"W x 13/4"D \$24.95

Middle flip page for maximum storage.

Imported.

*dropper
box
76KH00*



QS76KH - IMMEDIATE DELIVERY - \$29.95

DROPPER RIG FLY BOX | 71/4"L x 4"W x 11/4"D

Five removable inserts stores multiple pre-tied dropper rigs.

Imported.



*threader
2L9E51
2L9E52*

IMMEDIATE DELIVERY

POSIGRIP® THREADER FLY BOX

QS2L9E-51 small holds 182 flies: 47/8"L x 33/4"W x 11/4"D \$19.95

QS2L9E-52 medium holds 240 flies: 6"L x 35/8"W x 11/2"D \$22.95

Four special threaders make tying on flies easier.

Imported.



*30"
2GA903*

*24"
2GA902*

*22"
2GA901*

IMMEDIATE DELIVERY

BRODIN ECO-CLEAR NETS

QS2GA9-01 22" \$139

QS2GA9-02 24" \$139

QS2GA9-03 30" \$149

Eco-clear net is PVC-free. Plantation-raised teak wood.

Imported.



tether
4P4000

QS4P40 - IMMEDIATE DELIVERY - \$22.95

GEAR KEEPER STAFF TETHER

Designed to survive extended saltwater and chlorine exposure. Spectra/nylon cable with 60-lb. breaking strength. Extends 30".

MADE IN USA



net retractor
4P4100

QS4P41 - IMMEDIATE DELIVERY - \$25.95

GEAR KEEPER NET RETRACTOR

Full 42" extension with 60-lb. breaking strength.

MADE IN USA



sure-step
2T4701 51"
2T4702 59"

QS2T47 - IMMEDIATE DELIVERY - \$98

SURE-STEP FOLDING WADING STAFF | 51" and 59"

Unfolds fast and locks securely with double shock cord construction. Carbide tip. Sheath with lanyard.

Imported.



ripcord
4Y9L00

QS4Y9L - IMMEDIATE DELIVERY - \$149

RIPCORD WADING STAFF | 54"L. Collapsed length 18½"

Four-section staff of 7075 aluminum. Accessory Kit (01, \$34.50) includes Delrin® tip, fly retrieval tip, tip-removal tool. Neoprene sheath.

MADE IN USA



guide
2J0L00

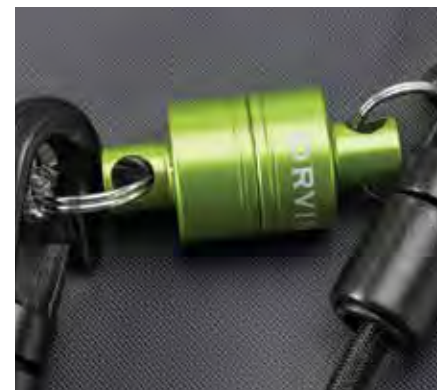
QS2J0L - IMMEDIATE DELIVERY - \$189

BRODIN ECO-CLEAR GUIDE NET

49" long, bow is 12¾" x 18"

USA-made PVC-free clear plastic. Made from sustainable plantation teak with reinforced yoke and mother-of-pearl measure marks.

Imported.



citron
2TB814

QS2TB8 - IMMEDIATE DELIVERY - \$29.95

NET MAGNET

Ultra-strong magnets to ensure security with durable bungee and split ring clips.

Imported.

SUN PROTECTION AND FISH DETECTION ●

Superior polarized optics at super competitive pricing



2BSG02



QS2BSG - IMMEDIATE DELIVERY - \$98

SUPERLIGHT MAGNIFIER SUNGLASSES

- Polarized magnifier polycarbonate lenses
- Lightweight and shatter resistant
- 1.50X, 2.00X, 2.50X
- In tortoise frame with amber lens

Imported.

2FEL02



QS2FEL - IMMEDIATE DELIVERY - \$119

MADISON SUNGLASSES

- Polarized fishing glasses with polycarbonate lens
- Brinephobic coating on the outside of the lens
- Optical grade anti-reflective backcoating inside
- Hard case and microfiber bag/cleaning cloth
- Black frame
- Brown base lens with blue mirror

Imported.

2BSE02



QS2BSE - IMMEDIATE DELIVERY - \$69

ORVIS SUGLASSES—SUPERLIGHT RIFFLE

- Polarized, shatter-resistant polycarbonate lenses offer 100% protection from harmful UV rays
- In tortoise frame with amber lens
- Medium coverage; one size fits most

Imported.

2FEJ02



QS2FEJ - IMMEDIATE DELIVERY - \$119

ORVIS FIREHOLE SUNGLASSES

- Polarized fishing glasses with polycarbonate lens
- Brinephobic coating on the outside of the lens
- Optical grade anti-reflective backcoating inside
- Hard case and microfibre bag/cleaning cloth
- Matte tortoise frame
- Brown base lens with blue mirror

Imported.

2FEK02



QS2FEK - IMMEDIATE DELIVERY - \$119

ORVIS DESCHUTES SUNGLASSES

- Polarised fishing glasses with polycarbonate lens
- Brinephobic coating on the outside of the lens
- Optical grade anti-reflective backcoating inside
- Hard case and microfibre bag/cleaning cloth
- Matte tortoise frame
- Brown base lens with blue mirror

Imported.

2BSF02



QS2BSF - IMMEDIATE DELIVERY - \$69

ORVIS SUNGLASSES—SUPERLIGHT BACKWATER

- Polarized, shatter-resistant polycarbonate lenses
- 100% protection from damaging UV rays
- In brown stripe frame with amber lens
- Large coverage; one size fits most

Imported.

2BSC02



QS2BSC - IMMEDIATE DELIVERY - \$69

ORVIS SUNGLASSES—SUPERLIGHT TAILOUT

- Polarized, shatter-resistant polycarbonate lenses
- 100% UV protection
- In matte tortoise frame with amber lens
- Medium coverage; one size fits most

Imported.



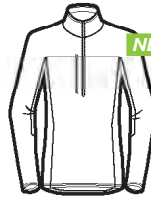
NEW

**PRO MEN'S
INSULATED HOODY
2SGH**



NEW

**PRO MEN'S
INSULATED VEST
2SGK**



NEW

**PRO MEN'S 1/2 ZIP FLEECE
2SGN**



NEW

**PRO MEN'S FLEECE
HOODY
2XHC**



NEW

**PRO SUN CREW
2SPE**



NEW

**PRO SUN HOODY
2SPC**



NEW

**PRO HYBRID L/S SHIRT
2SN8**

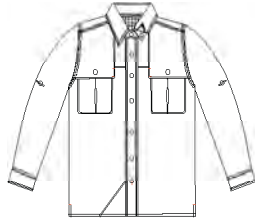


NEW

**PRO STRETCH L/S SHIRT
2SPA**



**OPEN AIR CASTER L/S
4A38 (4A4A TALL)**



**OPEN AIR PLAID
CASTER L/S
2NR1**



**OPEN AIR CASTER SS
4A39**



**OPEN AIR PLAID
CASTER S/S
2PZ5**



NEW

**OUTSMART TECH
CHAMBRAY L/S 21BY**



**TECH CHAMBRAY
WORKSHIRT L/S
18Z9 (2XLN TALL)**



**TECH CHAMBRAY
WORKSHIRT S/S
2KZ9**



**FLAT CREEK
SHIRT L/S
2R6B**



**FLAT CREEK
SHIRT S/S
2Z47**



**RIVER GUIDE L/S
2XRK**



NEW

**RIVER BEND
SHIRT L/S
2Z5P**



NEW

**GRANITE PEAKS
SHIRT 1E2X**



NEW

**STRIPED
WORKSHIRT L/S
2Z49**



NEW

**JOHNSON FORK
TECH SHIRT L/S
2Z44**



NEW

**JOHNSON FORK
TECH SHIRT S/S
2Z45**



**SOUTH FORK
STRETCH S/S
2Z43**



**SOUTH FORK
STRETCH L/S
2PS4**



**PERFORMANCE
SEERSUCKER S/S
2Z5R**



**PRINTED TECH
CHAMBRAY S/S 2Z5S**



**DRI-RELEASE L/S
CREW 2Z5X**



**DRI-RELEASE S/S
CREW 2Z5T**



**DRI-RELEASE
ZIP-NECK 2Z5Y**



**DRI-RELEASE HOODY
18YX**



**DRIRELEASE PRINTED
HOODIE 22MF**



**DRI-RELEASE
CAMO L/S CREW
20ES**



**OUTSMART 1/4 ZIP
20MG**



**OUTSMART HOODED
JACKET 2Z6P**

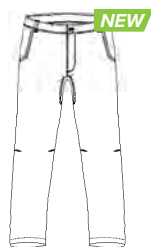


**DRIRELEASE
PRINTED 1/4 ZIP
22ME**



**ESCAPE L/S SHIRT
21BZ**

MEN'S / BOTTOMS



**ULTRALIGHT
PANT
21BT-21BX**



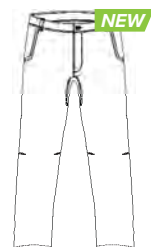
**ULTRALIGHT
SHORT 208M**



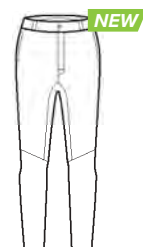
**JACKSON
STRETCH QUICK
DRY PANT
20L9-20MA**



**JACKSON
STRETCH QUICK
DRY SHORT 20MC**



**ULTRALIGHT PANT
WITH OUTSMART
208S**



**PRO UNDER
WADER
PANT 2SGR**



**OUTDOOR
STRETCH FIELD
PANT
2M1Y-2SKK**



**OUTDOOR
STRETCH FIELD
SHORT 2Z9R**



**BATTENKILL
TREK PANT
2Z5H-20ME**



**BATTENKILL
SHORT 2Z11**



**ESCAPE SHORT
2XNR**



**SANDSTONE
SHORT 20FK**



**ORVIS SWIM
TRUNKS
80LX**

NEW

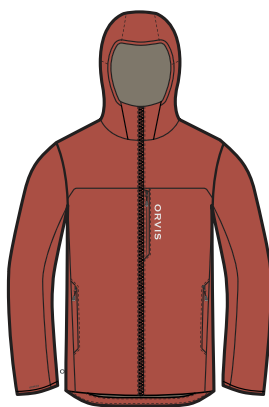
ORVIS
PRO Apparel / Men's



black
2SGH10



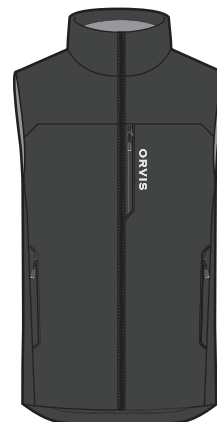
turbulence
2SGH09



hot sauce
2SGH06



hot sauce
2SGK06



black
2SGK10

QS2SGH - MID-SEPTEMBER DELIVERY - \$229

NEW MEN'S PRO INSULATED HOODY | Sizes S-XXL

Body mapped Primaloft® Gold 80G Active / Polartec® Alpha® 80G.

Nylon shell and liner. Polyester insulation. Washable. Imported.

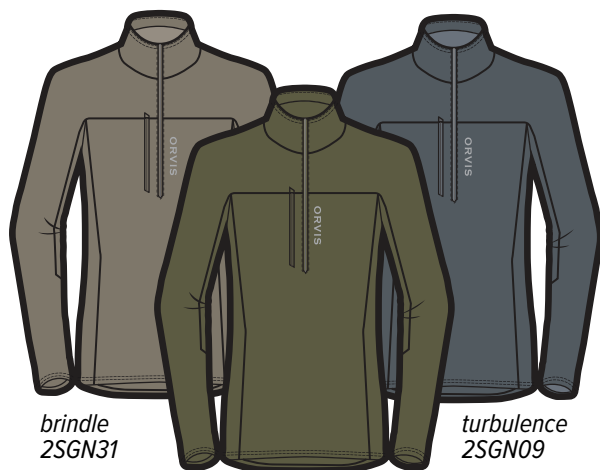


QS2SGK - MID-SEPTEMBER DELIVERY - \$159

NEW MEN'S PRO INSULATED VEST | Sizes S-XXL

Body mapped Primaloft® Gold 80G Active / Polartec® Alpha® 80G.

Nylon shell. Polyester insulation. Washable. Imported.



brindle
2SGN31

moss
2SGN21

turbulence
2SGN09



black
2XHC10



moss
2XHC21

QS2SGN - MID-SEPTEMBER DELIVERY - \$119

NEW MEN'S PRO HALF-ZIP FLEECE | Sizes S-XXL

Polartec® PowerStretch® Hardface® body and arms and Polartec® Power Grid side panel.

Polyester/spandex. Washable. Imported.



QS2XHC - MID-SEPTEMBER DELIVERY - \$149

NEW MEN'S PRO FLEECE HOODY | Sizes S-XXL

Polartec® PowerStretch® Hardface® body and arms and Polartec® Power Grid side panel.

Polyester/spandex. Washable. Imported.

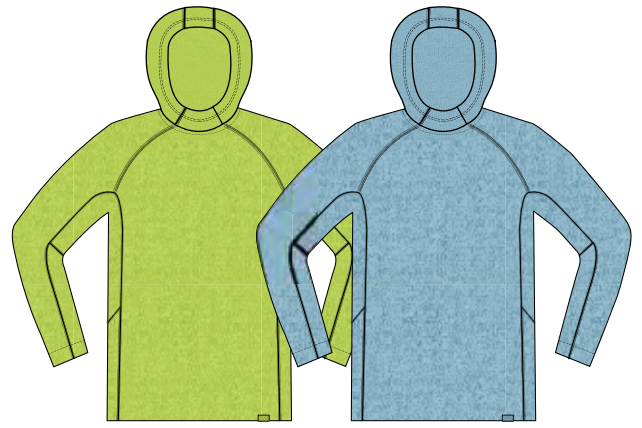




citron
2SPE14

aquamarine
2SPE28

gunmetal
2SPE09



citron
2SPC14

aquamarine
2SPC28

QS2SPE - JANUARY DELIVERY - \$69

NEW MEN'S PRO SUN CREW | Sizes S-XXL

Super lightweight fabric for sun and heat. UPF 50. Athletic Fit.

Polyester. Washable. Imported.

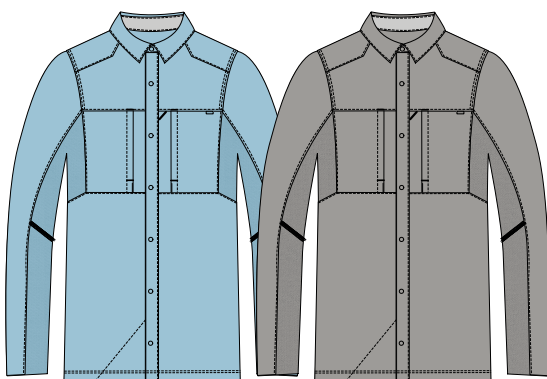


QS2SPC - JANUARY DELIVERY - \$89

NEW MEN'S PRO SUN HOODY | Sizes S-XXL

Super lightweight hoody for sun and heat. UPF 50. Athletic Fit.

Polyester. Washable. Imported.



aquamarine
2SN828

gunmetal
2SN809



aquamarine
2SPA28

olive
2SPA21

gunmetal
2SPA09

QS2SN8 - JANUARY DELIVERY - \$129

NEW MEN'S PRO HYBRID LONG-SLEEVED SHIRT | Sizes S-XXL

Body-mapped hybrid fabrication for sun and heat. UPF 50. Athletic Fit.

Polyester/nylon. Washable. Imported.



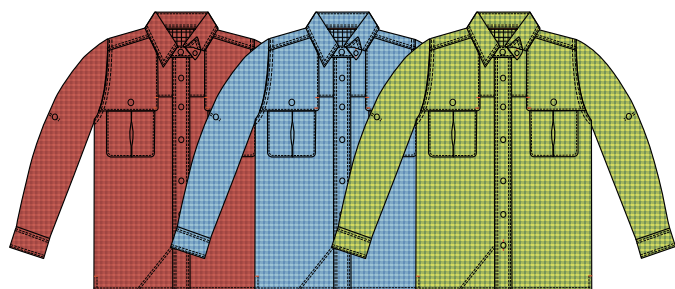
QS2SPA - JANUARY DELIVERY - \$119

NEW MEN'S PRO STRETCH LONG-SLEEVED SHIRT | Sizes S-XXL

Sun and heat protection with stretch built in. UPF 30. Athletic Fit.

Nylon/spandex. Washable. Imported.





sunset
4A3882
4A4A82

coastal blue
4A3848
4A4A48

limeade
4A3812
4A4A12



bright cobalt
2NR148

coastal blue
2NR103

tropic blue
2NR135

QS4A38 long-sleeved regular JANUARY DELIVERY - \$89

QS4A4A long-sleeved tall (no small) JANUARY DELIVERY - \$95

ORVIS OPEN AIR CASTER LONG-SLEEVED | **Sizes S-XXXL**

Our best-selling and most ventilated casting shirt. UPF 40+.

Polyester/nylon. Washable. Imported.

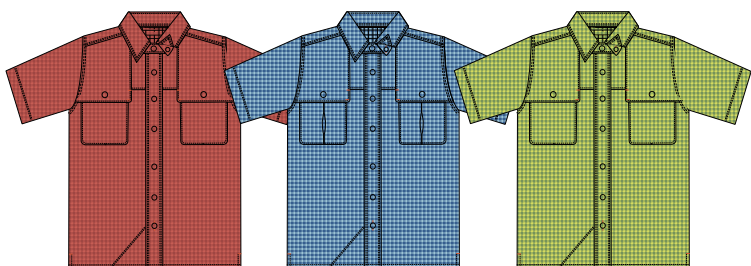


QS2NR1 - JANUARY DELIVERY - \$98

OPEN AIR PLAID CASTER LONG-SLEEVED | **Sizes M-XXL**

Moisture wicking, crinkle finish. tech fabric. UPF30+.

Polyester/nylon. Washable. Imported.



sunset
4A3982

coastal blue
4A3948

limeade
4A3912



Atlantic
2PZ505

limeade
2PZ528

dusty blue
2PZ503

QS4A39 - JANUARY DELIVERY - \$79

ORVIS OPEN AIR CASTER SHORT-SLEEVED | **Sizes S-XXXL**

Our best-selling and most ventilated casting shirt. UPF 40+.

Polyester/nylon. Washable. Imported.



QS2PZ5 - JANUARY DELIVERY - \$89

ORVIS OPEN AIR PLAID CASTER SHORT-SLEEVED | **Sizes M-XXL**

Moisture wicking, crinkle finish. tech fabric. UPF30+.

Polyester/nylon. Washable. Imported.



medium blue
21BY30



cactus
21BY21

QS21BY - JANUARY DELIVERY - \$98

NEW OUTSMART LONG-SLEEVED TECH CHAMBRAY | **Sizes M-XXL**

Tech Chambray with Outsmart Insect Shield. UPF 30+.

Polyester. Washable. Imported.





NEW—coral reef
18Z942
2XLN42

NEW—cactus
18Z921
2XLN21

NEW—tropic blue
18Z935
2XLN35

medium blue
18Z930
2XLN30

blue chambray
18Z919
2XLN19

QS18Z9 long-sleeved regular JANUARY DELIVERY - \$89

QS2XLN long-sleeved tall (no small) JANUARY DELIVERY - \$95

TECH CHAMBRAY LONG-SLEEVED WORK SHIRT | **Sizes S-XXXL Tall sizes 2" longer in body and sleeve**

Work shirt style with performance features.

Polyester. Washable. Imported.



NEW—coral reef
2KZ942

NEW—cactus
2KZ921

NEW—tropic blue
2KZ935

medium blue
2KZ930

blue chambray
2KZ919

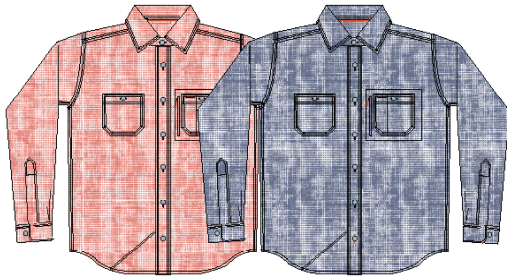
QS2KZ9 - JANUARY DELIVERY - \$79

TECH CHAMBRAY SHORT-SLEEVED WORK SHIRT | **Sizes S-XXXL**

Work shirt style with performance features.

Polyester. Washable. Imported.





washed sienna
2R6B06

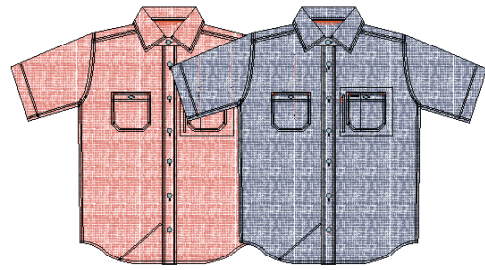
navy
2R6B03

QS2R6B - JANUARY DELIVERY - \$89

FLAT CREEK LONG-SLEEVED SHIRT | Sizes M-XXL

Thermo-wicking polyester for comfort in extreme heat

Polyester/cotton/linen. Washable. Imported.



washed sienna
2Z4706

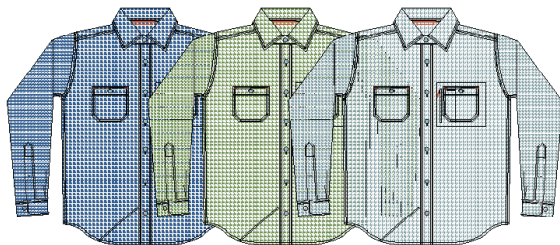
navy
2Z4703

QS2Z47 - JANUARY DELIVERY - \$79

FLAT CREEK SHORT-SLEEVED SHIRT | Sizes M-XXL

Thermo-wicking polyester for comfort in extreme heat

Polyester/cotton/linen. Washable. Imported.



ocean blue
2XRK19

cactus
2XRK21

dusty blue
2XRK03

QS2XRK - JANUARY DELIVERY - \$98

RIVER GUIDE SHIRT | Sizes M-XXL

Cool comfort performance with stretch built in.

Cotton/nylon/spandex. Washable. Imported.



coral reef
2Z5P42

dragonfly
2Z5P34

tropic blue
2Z5P05

bay blue
2Z5P19

QS2Z5P - JANUARY DELIVERY - \$89

NEW RIVER BEND SHIRT | Sizes M-XXL

Cotton blend with stretch built in. Shaped hem for wearing untucked.

Cotton/nylon/spandex. Washable. Imported.



cactus
1E2X21

dusty blue
1E2X19

QS1E2X - JANUARY DELIVERY - \$79

NEW GRANITE PEAKS SHIRT | Sizes M-XXL

Western-inspired fishing shirt.

Cotton. Washable. Imported.



blue
2Z4905

QS2Z49 - JANUARY DELIVERY - \$89

NEW STRIPED WORK SHIRT | Sizes M-XXL

Cotton blend work shirt with UPF 40. Mechanical stretch.

Cotton/polyester/nylon. Washable. Imported.





atlantic
2Z4405

bright cobalt
2Z4448

tropic blue
2Z4419

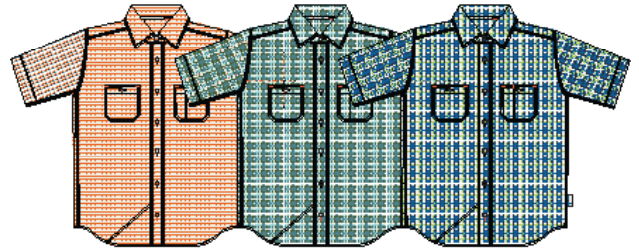
QS2Z44 - JANUARY DELIVERY - \$98

NEW JOHNSON FORK TECH LONG-SLEEVED SHIRT

Sizes M-XXL

Heritage work shirt in an aerated performance fabric.

Nylon/polyester. Washable. Imported.



washed sienna
2Z4522

cactus
2Z4521

moonlight blue
2Z4519

QS2Z45 - JANUARY DELIVERY - \$89

NEW JOHNSON FORK TECH SHORT-SLEEVED SHIRT

Sizes M-XXL

Heritage work shirt in an aerated performance fabric.

Nylon/polyester. Washable. Imported.



aqua sea
2Z4328

cactus
2Z4321

vapor
2Z4309

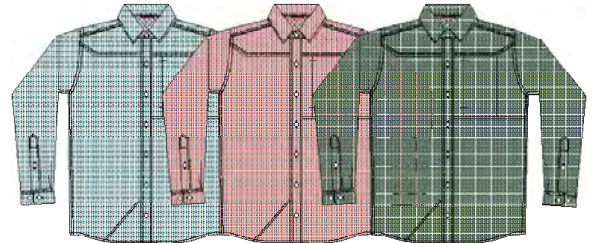
QS2Z43 - JANUARY DELIVERY - \$89

NEW SOUTH FORK STRETCH SHORT-SLEEVED SHIRT

Sizes M-XXL

Cotton/blend with stretch. Hidden button-down. Vented yoke.

Cotton/nylon/spandex. Washable. Imported.



azure
2PS419

coral reef
2PS442

cactus
2PS421

QS2PS4 - JANUARY DELIVERY - \$98

NEW SOUTH FORK STRETCH LONG-SLEEVED SHIRT

Sizes M-XXL

Cotton/blend with stretch. Hidden button-down. Vented yoke.

Cotton/nylon/spandex. Washable. Imported.



cactus
2Z5R21

coral reef
2Z5R42

coastal blue
2Z5R05

QS2Z5R - JANUARY DELIVERY - \$79

NEW SHORT-SLEEVED PERFORMANCE SEERSUCKER

Sizes M-XXL

Performance seersucker camp shirt.

Polyester/cotton. Washable. Imported.



navy
2Z5S03

QS2Z5S - JANUARY DELIVERY - \$89

NEW PRINTED TECH CHAMBRAY SS SHIRT | Sizes M-XXL

Trout print camp shirt in tech chambray.

Polyester. Washable. Imported.





dark charcoal
heather
2Z5X31

blaze
orange
2Z5X42

bright
cobalt
2Z5X48

azure
2Z5X19

cactus
2Z5X21

QS2Z5X - JANUARY DELIVERY - \$59

NEW **DRIRELEASE LONG-SLEEVED CREW** | Sizes S-XXL

Optimum blend of wicking cotton and fast-drying polyester.

Polyester/cotton. Washable. Imported.



dark charcoal
heather
2Z5T31

blaze orange
2Z5T42

bright cobalt
2Z5T48

azure
2Z5T19

cactus
2Z5T21

QS2Z5T - JANUARY DELIVERY - \$49

NEW **DRIRELEASE SHORT-SLEEVED CREW** | Sizes S-XXL

Optimum blend of wicking cotton and fast-drying polyester.

Polyester/cotton. Washable. Imported.



dark charcoal
heather
2Z5Y31

blaze orange
2Z5Y42

bright cobalt
2Z5Y48

azure
2Z5Y19

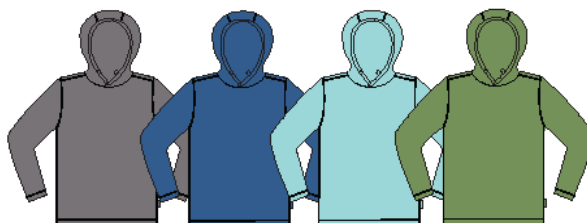
cactus
2Z5Y21

QS2Z5Y - JANUARY DELIVERY - \$69

NEW **DRIRELEASE ZIP-NECK** | Sizes S-XXL

Best-selling drirelease® zip-neck.

Polyester/cotton. Washable. Imported.



dark charcoal
18YX31

bright
cobalt
18YX48

azure
18YX19

cactus
18YX21

QS18YX - JANUARY DELIVERY - \$79

NEW **DRIRELEASE HOODY** | Sizes S-XXL

Best-selling hoody in new colors.

Polyester/cotton. Washable. Imported.





water vapor
22MF09

water camo
22MF19

falls blue
camo
22MF05

brown camo
22MF02

QS22MF - JANUARY DELIVERY - \$89

DRIRELEASE PRINTED HOODY | Sizes S-XXL

Our proven drirelease® fabric in camo hoody.

Polyester/cotton. Washable. Imported.



water camo
20ES19



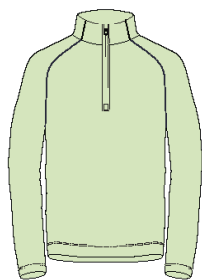
water vapor
20ES09

QS20ES - JANUARY DELIVERY - \$69

NEW DRIRELEASE L/S WATER CAMO CREW | Sizes S-XXL

Long-sleeved crew neck T-shirt in a water camo version.

Polyester/cotton. Washable. Imported.



honeydew
20MG08



dusty blue
20MG03

QS20MG - JANUARY DELIVERY - \$79

NEW OUTSMART QUARTER-ZIP | Sizes S-XXL

Bug repellent protection. UPF 30. Performance fabric.

Polyester/rayon/spandex. Washable. Imported.



heathered gray
226P09

QS226P - JANUARY DELIVERY - \$129

NEW OUTSMART HOODED JACKET | Sizes M-XXL

Bug repellent protection. UPF 10. Performance fabric.

Polyester. Washable. Imported.



blue falls
camo
22ME05



brown camo
22ME02

QS22ME - JANUARY DELIVERY - \$79

DRIRELEASE PRINTED QUARTER-ZIP | Sizes S-XXL

Our proven drirelease® fabric in printed camo 1/4 zip.

Polyester/cotton. Washable. Imported.



aqua sea
22B128

dove gray
22B109

bay blue
22B105

QS21BZ - JANUARY DELIVERY - \$59

NEW ESCAPE LONG-SLEEVED SHIRT | Sizes S-XXXL

Nylon microfiber. Extended sizes. UPF 40+

Nylon. Washable. Imported.







gunmetal
21BT

stone
21BX

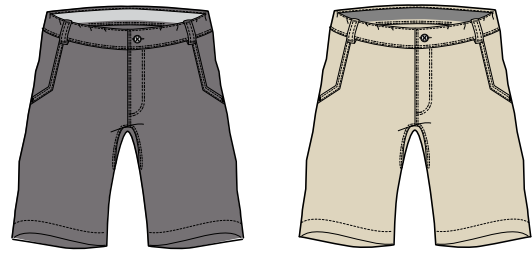
QS21BT-21BX - JANUARY DELIVERY - \$69

NEW MEN'S ULTRALIGHT PANTS

Sizes M-XXXL 30", 32" inseam

DWR coated fabric. UPF 50.

Nylon. Washable. Imported.



gunmetal
208M09

stone
208M11

QS208M - JANUARY DELIVERY - \$59

NEW MEN'S ULTRALIGHT SHORTS | Sizes M-XXXL

DWR coated fabric. UPF 50.

Nylon. Washable. Imported.



gunmetal
20L9

canyon
20MA

QS20L9-20MA - JANUARY DELIVERY - \$98

NEW JACKSON STRETCH QUICK-DRY PANTS

Sizes M-XXL 30", 32" inseam

Quick-dry stretch pants. UPF 50.

Nylon/spandex. Washable. Imported.



gunmetal
20MC09

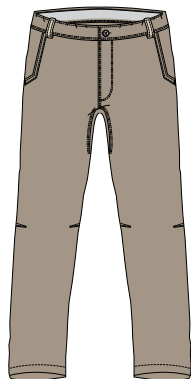
canyon
20MC02

QS20MC - JANUARY DELIVERY - \$89

NEW JACKSON STRETCH QUICK-DRY SHORTS | Sizes M-XXL

Quick-dry stretch shorts. UPF 50.

Nylon/spandex. Washable. Imported.



khaki
208S

QS208S - JANUARY DELIVERY - \$89

NEW OUTSMART ULTRALIGHT PANTS

Sizes M-XXL 30", 32" inseam

Outsmart Insect Shield® technology. UPF 50

Nylon. Washable. Imported.



turbulence
2SGR09

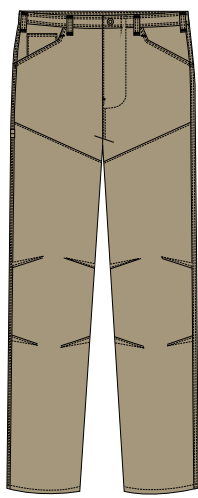
QS2SGR - MID-SEPTEMBER DELIVERY - \$139

NEW MEN'S PRO UNDERWADER PANTS | Sizes M-XXXL

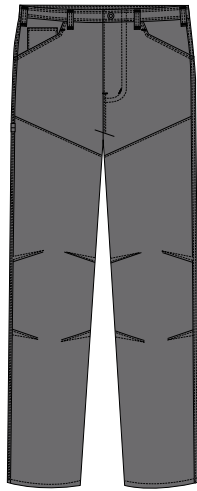
4-way stretch woven. Tapered leg. Fleece pile interior.

Polyester/spandex. Washable. Imported.





khaki
2M1Y



gray
2SKK

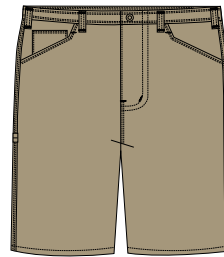
QS2M1Y-2SKK - JANUARY DELIVERY - \$98

OUTDOOR STRETCH FIELD PANTS

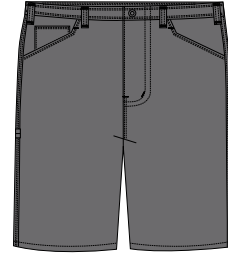
Sizes 32-42 30", 32", 34" inseam

Rugged canvas pants with stretch. Articulated knees.

Cotton/spandex. Washable. Imported.



khaki
2Z9R01



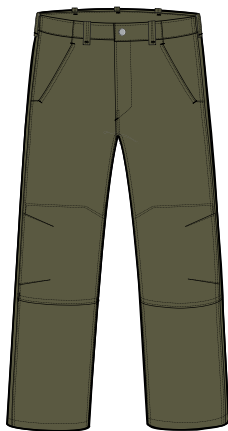
gray
2Z9R09

QS2Z9R - JANUARY DELIVERY - \$89

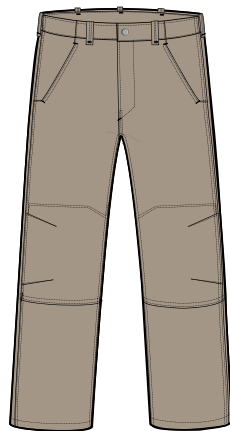
NEW OUTDOOR STRETCH FIELD SHORTS | Sizes 32-42

Rugged canvas shorts with stretch.

Cotton/spandex. Washable. Imported.



olive
20ME



elmwood
2Z5H

QS20ME - JANUARY DELIVERY - \$89

QS2Z5H - JANUARY DELIVERY - \$109

NEW BATTENKILL TREK PANTS

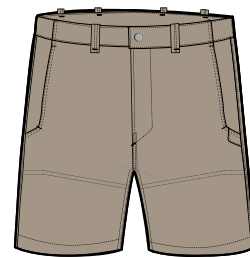
Sizes 32-42 30", 32", 34" inseam

Rugged outdoor performance pants with stretch.

Organic cotton/nylon/spandex. Washable. Imported.



olive
2Z1121



elmwood
2Z1101

QS2Z11 - JANUARY DELIVERY - \$89

NEW BATTENKILL TREK SHORTS | Sizes 32-42

Rugged outdoor performance shorts with stretch.

Organic cotton/nylon/spandex. Washable. Imported.



QS2XNR - JANUARY DELIVERY - \$89

ESCAPE SHORTS | **Sizes 32-42**

Six-pocket, quick-dry with stretch.

Polyester/cotton/spandex. Washable. Imported.

QS20FK - JANUARY DELIVERY - \$59

NEW SANDSTONE SHORTS | **Sizes 32-42**

5-pocket cotton shorts with stretch.

Cotton/spandex. Washable. Imported.

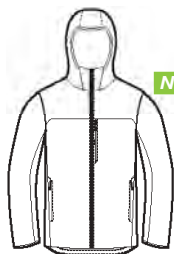


QS80LX - JANUARY DELIVERY - \$59

ORVIS SWIM TRUNK | **Sizes M-XXL**

Quick-drying nylon with polyester mesh lining.

Nylon with polyester lining. Washable. Imported.



PRO INSULATED HOODY
2SGJ



PRO INSULATED VEST
2SGL



PRO 1/2 ZIP FLEECE
2SGP



PRO HYBRID L/S SHIRT
2SPH



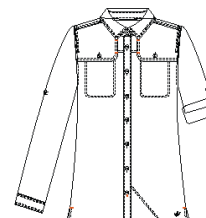
PRO STRETCH L/S SHIRT
2SPJ



PRO SUN CREW
2SPL



PRO SUN HOODY
2SPK



OPEN AIR CASTER L/S
3E9X



**TECH CHAMBRAY
WORKSHIRT L/S**
2PNA



OPEN AIR CASTER S/S
2PZ6



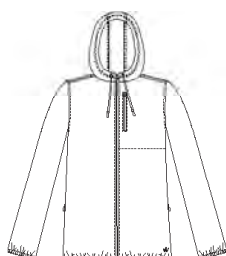
**TECH CHAMBRAY
WORKSHIRT S/S**
2XG4



ESCAPE L/S SHIRT
22JL



**TECH CHAMBRAY
PLAID WORKSHIRT L/S**
2YL7



**HOODED OPEN
AIR CASTER 19MN**



**OUTSMART TECH
CHAMBRAY L/S**
2YK7



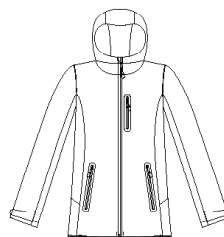
OUTSMART L/S TECH TEE
2M2B



RIVER GUIDE TECH SHIRT
2FZF



RIVER GUIDE TECH S/S
20LJ



THE HATCH RAIN JACKET
2KEX



RAINY BRIDGE S/S
2N92



DRI-RELEASE L/S
2Z31



DRI-RELEASE S/S
2Z3Z

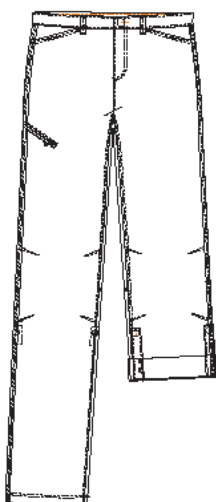


DRI-RELEASE 1/4 ZIP
14BP

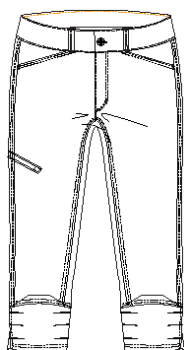


DRI-RELEASE HOODY
2YJH

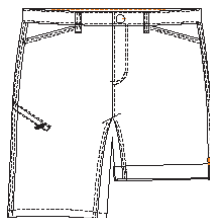
WOMEN'S / *BOTTOMS*



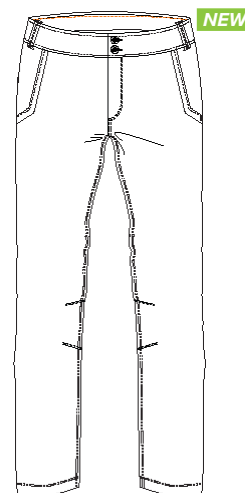
JACKSON QUICK-DRY
STRETCH PANT
17N2



JACKSON QUICK-DRY
STRETCH CAPRI
183N



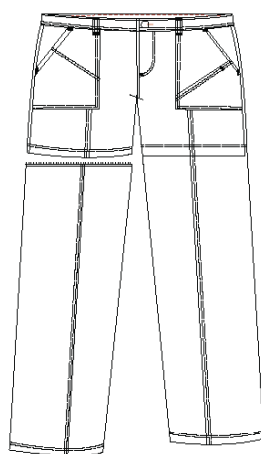
JACKSON QUICK-DRY
STRETCH SHORT
17N3



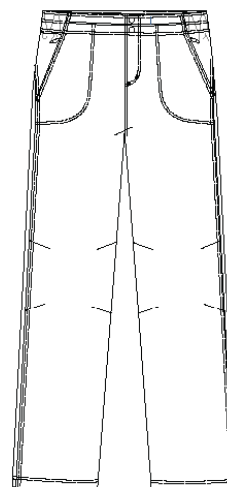
ULTRALIGHT PANT
21BP



ULTRALIGHT SHORT
21BR



JACKSON QUICK-DRY
STRETCH PANT
2N9K



OUTSMART
WANDER PANT
20K4

NEW

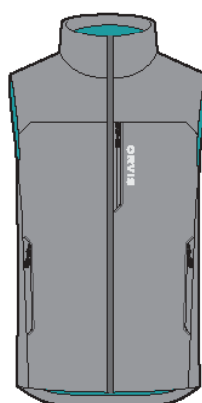
ORVIS
PRO Apparel / Women's



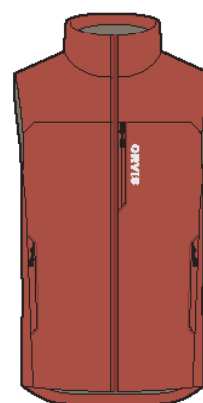
dragonfly
2SGJ34



black
2SGJ10



alloy
2SGL09



hot sauce
2SGL06

QS2SGJ - MID-SEPTEMBER DELIVERY - \$229

NEW WOMEN'S PRO INSULATED HOODY | Sizes XS-XL

Body mapped Primaloft® Gold Active 80G / Polartec® Alpha® 80G.

Nylon shell and liner. Polyester insulation. Washable. Imported.



QS2SGL - MID-SEPTEMBER DELIVERY - \$159

NEW WOMEN'S PRO INSULATED VEST | Sizes XS-XL

Body mapped Primaloft® Gold Active 80G / Polartec® Alpha® 80G.

Nylon shell and liner. Polyester insulation. Washable. Imported.



typhoon
2SGP19

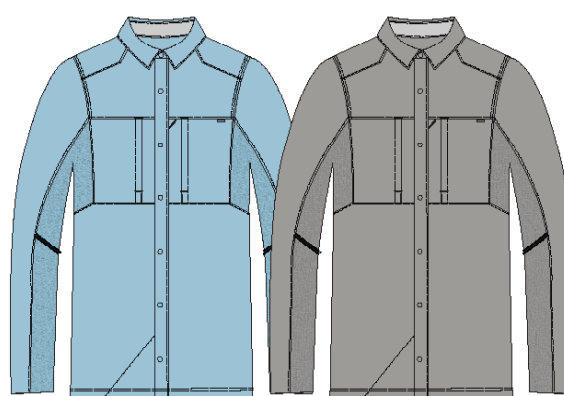
turbulence
2SGP09

QS2SGP - MID-SEPTEMBER DELIVERY - \$119

NEW WOMEN'S PRO HALF-ZIP FLEECE | Sizes XS-XL

Polartec® PowerStretch® Hardface® body and arms and Polartec® Power Grid side panels.

Polyester/spandex. Washable. Imported.



aquamarine
2SPH28

gunmetal
2SPH09

QS2SPH - JANUARY DELIVERY - \$129

NEW WOMEN'S PRO HYBRID LS SHIRT | Sizes XS-XL

Body-mapped hybrid fabrication for ultimate protection from sun and heat.

Polyester/nylon. Washable. Imported.





emberglow
2SPJ42

blue depths
2SPJ03

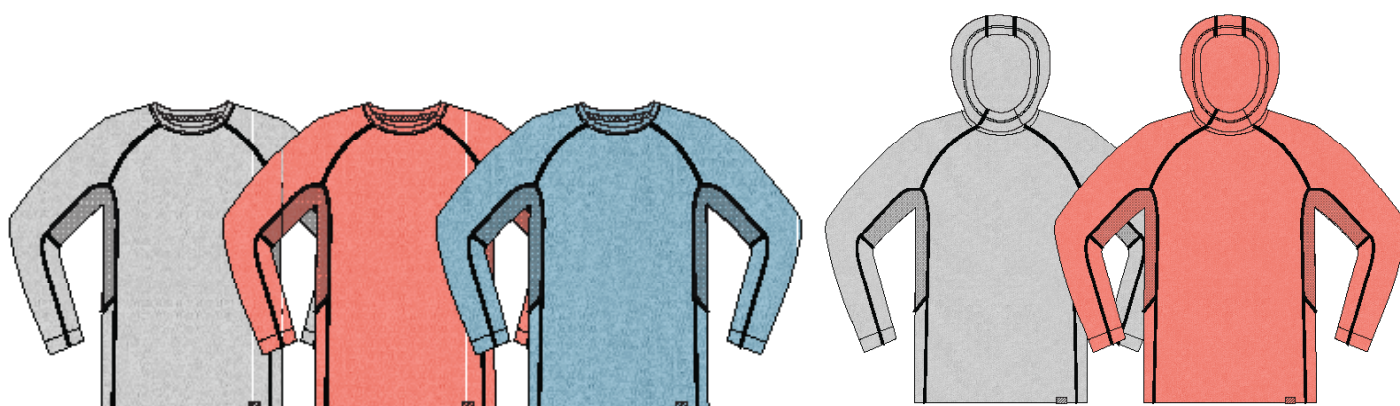
vapor
2SPJ09

QS2SPJ - JANUARY DELIVERY - \$119

NEW WOMEN'S PRO STRETCH LS SHIRT | Sizes XS-XL

Sun and heat protection with stretch built in. UPF 30.

Nylon/spandex. Washable. Imported.



vapor
2SPL09

emberglow
2SPL42

aquamarine
2SPL28

vapor
2SPK09

emberglow
2SPK42

QS2SPL - JANUARY DELIVERY - \$69

NEW WOMEN'S PRO SUN CREW | Sizes XS-XL

Women's crewneck in super lightweight fabric for sun and heat.

Polyester. Washable. Imported.



QS2SPK - JANUARY DELIVERY - \$89

NEW WOMEN'S PRO SUN HOODY | Sizes XS-XL

Super lightweight fabric for sun and heat. Athletic Fit.

Polyester. Washable. Imported.





white
3E9X81

melon
3E9X72

dusty blue
3E9X45

navy
3E9X32



medium
blue
2PNA05

blue
chambray
2PNA19

emberglow
2PNA42

crocus
2PNA32

tropic blue
2PNA28

QS3E9X - JANUARY DELIVERY - \$89

WOMEN'S LONG-SLEEVED OPEN AIR CASTER | Sizes XS-XL

Our best-selling, most ventilated casting shirt cut for women.

Polyester/nylon. Washable. Imported.



white
2PZ604



dusty blue
2PZ645

QS2PZ6 - JANUARY DELIVERY - \$79

WOMEN'S SHORT-SLEEVED OPEN AIR CASTER | Sizes XS-XL

Our best-selling, most ventilated casting shirt cut for women.

Polyester/nylon. Washable. Imported.



dragonfly
22JL34

aqua sea
22JL28

washed sienna
22JL22

QS22JL - JANUARY DELIVERY - \$59

NEW WOMEN'S ESCAPE LONG-SLEEVED SHIRT

Sizes XS-XL

Lightweight, quick-dry nylon microfiber with UPF 40 sun protection.

Nylon. Washable. Imported.



QS2PNA - JANUARY DELIVERY - \$89

WOMEN'S LONG-SLEEVED TECH CHAMBRAY WORK SHIRT

Sizes XS-XL

Lightweight UPF 30 dries quickly and wicks moisture.

Polyester. Washable. Imported.



blue chambray
2XG419

crocus
2XG432

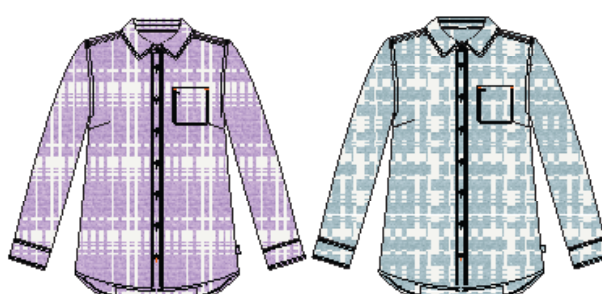
QS2XG4 - JANUARY DELIVERY - \$79

WOMEN'S SHORT-SLEEVED TECH CHAMBRAY WORK SHIRT

Sizes XS-XL

Lightweight UPF 30 dries quickly and wicks moisture.

Polyester. Washable. Imported.



aster
2YL741

dusty blue
2YL703

QS2YL7 - JANUARY DELIVERY - \$89

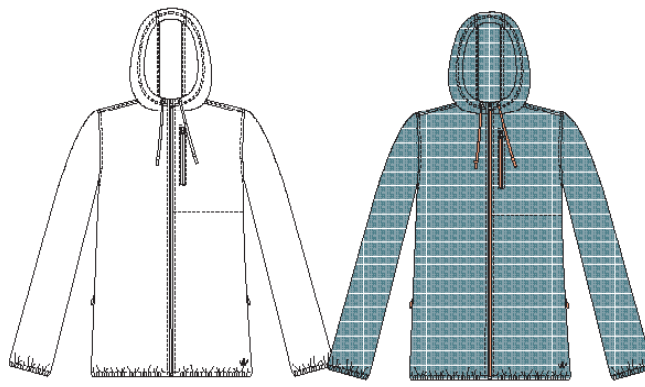
NEW WOMEN'S TECH-CHAMBRAY PLAID WORK SHIRT

Sizes XS-XL

Lightweight UPF 30 dries quickly and wicks moisture.

Polyester. Washable. Imported.





white
19MN61

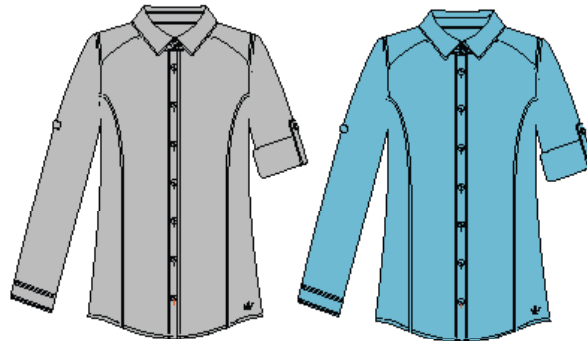
dusty blue
19MN19

QS19MN - JANUARY DELIVERY - \$98

WOMEN'S HOODED OPEN AIR CASTER | Sizes XS-XL

Ventilated, quick drying, UPF 40. Caped front and back panels.

Polyester/nylon. Washable. Imported.



vapor
2XK709

aqua sea
2XK728

QS2XK7 - JANUARY DELIVERY - \$98

WOMEN'S OUTSMART TECH CHAMBRAY | Sizes XS-XL

Bug-repelling OutSmart® Insect Shield and UPF 30.

Polyester. Washable. Imported.



melon
2M2B62

white
2M2B04

aqua sea
2M2B28

QS2M2B - JANUARY DELIVERY - \$69

WOMEN'S OUTSMART LONG-SLEEVED TECH TEE | Sizes XS-XL

Bug-repelling OutSmart® Insect Shield and UPF 30. Thumb holes.

Polyester/rayon/spandex. Washable. Imported.





aster
2FZF30

ocean blue
2FZF19

clearwater
2FZF28

black
2FZF10

QS2FZF - JANUARY DELIVERY - \$98

NEW WOMEN'S RIVER GUIDE TECH LONG-SLEEVED SHIRT | Sizes XS-XL

UPF 30 protection in quick-dry lightweight fabric with hidden mesh vents.

Cotton/nylon/spandex. Washable. Imported.



aster
20LJ30

ocean blue
20LJ19

QS20LJ - JANUARY DELIVERY - \$89

NEW WOMEN'S RIVER GUIDE TECH SHORT-SLEEVED SHIRT | Sizes XS-XL

UPF 30 protection in quick-dry lightweight fabric with hidden mesh vents.

Cotton/nylon/spandex. Washable. Imported.



blue wave
2KEX03

2KEX09

QS2KEX - JANUARY DELIVERY - \$139

WOMEN'S HATCH RAIN JACKET | Sizes XS-XL

Lightweight and packable 2.5 layer jacket. DWR coating.

Nylon. Washable. Imported.



tropic blue
2N9205

emberglow
2N9262

QS2N92 - JANUARY DELIVERY - \$79

WOMEN'S RAINY BRIDGE TECH SHORT-SLEEVED SHIRT | Sizes XS-XL

UPF 30+ sun protection in quick-dry, ultralightweight fabric.

Polyester/nylon. Washable. Imported.





white 2Z3104 melon 2Z3142 aqua sea 2Z3128 tropic blue 2Z3105

QS2Z31 - JANUARY DELIVERY - \$59

NEW WOMEN'S DRIRELEASE LONG-SLEEVED CREW

Sizes XS-XL

Updated crew with odor control.

Polyester/cotton. Washable. Imported.



white 2Z3Z04 melon 2Z3Z42 aqua sea 2Z3Z28 tropic blue 2Z3Z05

QS2Z3Z - JANUARY DELIVERY - \$49

NEW WOMEN'S DRIRELEASE SHORT-SLEEVED CREW

Sizes XS-XL

Updated crew with odor control.

Polyester/cotton. Washable. Imported.



aster 14BP38 melon 14BP82 aqua sea 14BP28 tropic blue 14BP34 dark charcoal heather 14BP31

QS14BP - JANUARY DELIVERY - \$69

NEW WOMEN'S DRIRELEASE QUARTER-ZIP | Sizes XS-XL

Quick-dry, moisture-wicking knit that feels as soft as cotton.

Polyester/cotton. Washable. Imported.



melon 2YJH42 aqua sea 2YJH28 dark charcoal heather 2YJH89

QS2YJH - JANUARY DELIVERY - \$79

NEW WOMEN'S DRIRELEASE HOODIE | Sizes XS-XL

Quick-dry, moisture-wicking knit that feels as soft as cotton.

Polyester/cotton. Washable. Imported.





QS17N2 pants inseam converts from 32"-23" - JANUARY DELIVERY - \$98

WOMEN'S JACKSON QUICK-DRY STRETCH PANTS | **Sizes 4-20**

Quick-dry, moisture-wicking stretch fabric with UPF 50. Modern Fit with lower sport rise.

Nylon/spandex. Washable. Imported.



QS183N capris 17½" inseam - JANUARY DELIVERY - \$89

WOMEN'S JACKSON QUICK-DRY STRETCH CAPRIS | **Sizes 4-20**

Quick-dry, moisture-wicking stretch fabric with UPF 50. Modern Fit with lower sport rise.

Nylon/spandex. Washable. Imported.



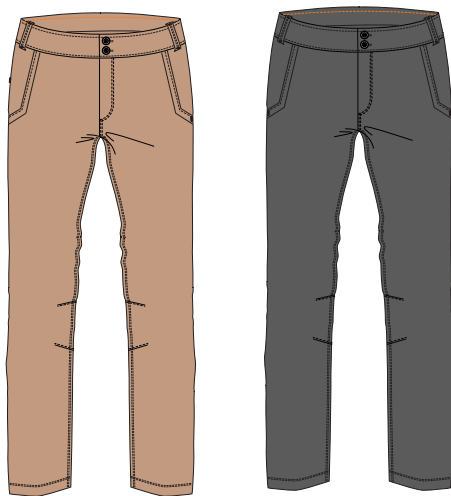
QS17N3 shorts inseam converts from 8½" to 5½" - JANUARY DELIVERY - \$79

WOMEN'S JACKSON QUICK-DRY STRETCH SHORTS | **Sizes 4-20**

Quick-dry, moisture-wicking stretch fabric with UPF 50. Modern Fit with lower sport rise.

Nylon/spandex. Washable. Imported.





khaki
21BP01

gunmetal
21BP09

QS21BP - JANUARY DELIVERY - \$69

NEW ULTRALIGHT PANTS | Sizes 4-20

Water-repellent quick-dry fabric is ideal for wet wading.

Nylon. Washable. Imported.



khaki
21BR01

gunmetal
21BR09

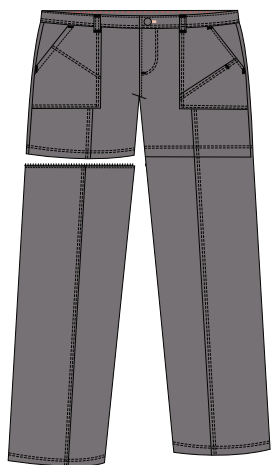
dusty blue
21BR05

QS21BR - JANUARY DELIVERY - \$59

NEW ULTRALIGHT SHORTS | Sizes 4-20

Water-repellent quick-dry fabric is ideal for wet wading.

Nylon. Washable. Imported.



gunmetal
2N9K09

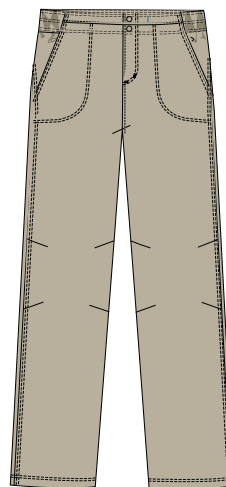
QS2N9K - JANUARY DELIVERY - \$119

JACKSON QUICK-DRY STRETCH CONVERTIBLE PANTS

Sizes 4-20

Zip-off design. Quick-dry stretch fabric. UPF 50. Modern Fit.

Nylon/spandex. Washable. Imported.



canyon
20K402

QS20K4 - JANUARY DELIVERY - \$109

OUTSMART WANDER PANTS | Sizes 4-20

OutSmart® Insect Shield® fends off mosquitoes, ticks, ants, flies, chiggers, midges plus protects from the sun with UPF 30.

Nylon/spandex. Washable. Imported.



ORVIS®

LOGO WEAR / SHIRTS AND HATS

PROVEN PROFIT BUILDERS. EVERYONE THAT WALKS IN DOESN'T FISH...
...BUT THEY ALL WEAR T-SHIRTS. JANUARY 2020 DELIVERY



heathered gray
2ZZP61

DRIRELEASE REDFISH
QS2ZZP
\$59



medium blue
2ZZN70

DRIRELEASE MOUNTAIN RISE HOODY
QS2ZZN
\$89



bright cobalt
2ZZS05

DRIRELEASE ORVIS LABEL SHORT-SLEEVED
QS2ZZS
\$59



heather gray
2XLK09

TROUT HORIZON SHORT-SLEEVED
QS2XLK
\$29

white
22JR04



**MOUNTAINSCAPE BENT
ROD SHORT-SLEEVED**

QS22JR
\$29

light heather gray
22JT09



**JUMPING TROUT
SHORT-SLEEVED**

QS22JT
\$29

charcoal heather
2ZZT09



TARPON BONES SHORT-SLEEVED

QS2ZZT
\$29

storm
22J005



PROTECT AND CONSERVE SHORT-SLEEVED

QS22J0
\$29

grass
22JY08



ORVIS MOUNTAINSCAPE
QS22JY
\$29

military olive
22JZ21



ORVIS BADGE LOGO SINGLE COLOR
QS22JZ
\$29

heather gray
2XLG09



HALFTONE TROUT
QS2XLG
\$29

burgundy heather
22J106



RETRO MOUNTAINSCAPE
QS22J1
\$29

navy heather
22JX03



MEN'S TIKI FISH SS
QS22JX
\$29

light heather gray
22J309



WOMEN'S ENDLESS SUNRISE SS
QS22J3
\$29

white
22J604



WOMEN'S CASCADIA
QS22J6
\$29

light blue
22J505



WOMEN'S WATERCOLOR TROUT
QS22J5
\$29



white
22KB04

**JUMPING TROUT BLACK
AND WHITE TRUCKER**

QS22KB
\$29



red/white/blue
22KF06

**QUALITY FLYFISHING
EQUIPMENT HAT**

QS22KF
\$29



navy
22FM03

**HORIZON TROUT
FLAT BRIM TRUCKER**

QS22FM
\$29



sandstone
3G6K18



olive
3G6K21

VINTAGE WAXED HAT

QS3G6K
\$39



washed black
2H7E10

VINTAGE CROSSED RODS HAT

QS2H7E
\$29



camo
12HN21

RETRO BENT ROD HAT

QS12HN
\$29



navy
2XKX03

TROUT HORIZON CANVAS CAP

QS2XKX
\$29



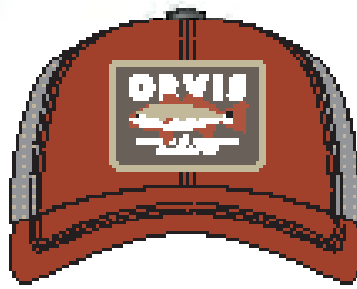
black
2ZRE10

COVERT BENT ROD HAT

QS2ZRE
\$29



white
2ZX904



2ZX905



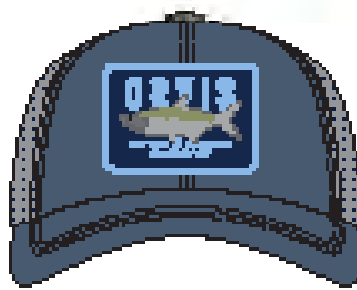
olive
2XKY21

CASCADIA LEATHER PATCH HAT

QS2XKY
\$29



dragonfly
2ZX905



2XKP09



light gray
22J909

ORVIS RETRO TRUCKER LOPRO

QS2ZX9
\$29

SALTWATER SLAM HAT

QS2XKP
\$29

**ORVIS TIKI TACKLE
AND SUPPLY HAT**

QS22J9
\$29

white
2LHJ24 (August delivery)

pheasant
2LHJ20

mayfly
2LHJ18



labrador
2LHJ02



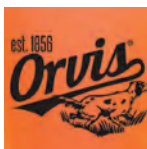
salt
2LHJ13



trout
2LHJ06



on the dock
2LHJ09



setter
2LHJ11



blue
2LHJ23 (August
delivery)

ORVIS LOGO SHOP SILIPINT

QS2LHJ - IMMEDIATE DELIVERY
\$12.95



trout
2KRZ60

TROUT BOTTLE OPENER

QS2KRZ - IMMEDIATE DELIVERY
\$12.95



NAME DROP

Let 'em know who you are.

Throughout the book, this icon signifies an item is capable of accepting embroidery for custom shop or guide service personalization.



Spring 2020 Orvis Name Drop Custom Embroidery

1. Minimum embroidery orders are as follows:

Shirts - 12 per style per image or logo; choose from any available colors

Hats - 12 per style per image or logo; choose from any available colors

2. Embroidery charge is \$3.00 per image per item or garment, except there is no additional embroidery charge for hats - the charge is included in the hat prices on this order form. Embroidery charge may exceed \$3.00 for very large images or high stitch counts. An extra \$1.50 will be charged for the addition of any version of the "Orvis Endorsed" logo.

3. The embroidery program offers three ways to customize items:

a) Use a "stock" image and "drop in" your shop or lodge name, or

b) Submit an already-digitized file of your logo or image. Digitized artwork may be emailed to Denise Hamilton at dealerspecialstrke@orvis.com, or

c) Submit your logo or image artwork file and Orvis will provide a digitized version from which embroidery can be created. A one-time digitization fee will apply. Artwork to be digitized may be emailed to Denise Hamilton at dealerspecialstrke@orvis.com. Artwork should be in .jpg, .pdf, or .eps format.

4. Allow 3 weeks for delivery. For newly digitized files, allow 3 weeks after final approval of digitization for delivery.

5. Changes to preseason embroidery orders must be made 6 weeks in advance of scheduled ship date.

6. Actual freight costs are charged to ship embroidery orders.

Embroidery orders may be faxed to 800 442 2050 Attn: Denise Hamilton, or may be emailed to Denise Hamilton at dealerspecialstrke@orvis.com



deep navy
2AZK35



gray/white
2AZK89



camo
2P1L21

STRUCTURED TRUCKER QS2AZK \$22

CAMO TRUCKER QS2P1L \$22



tan
8X3G01



olive
8X3G21



blaze orange
2PKB42

WAXED CAP QS8X3G \$29

MESH BLAZE WAX BRIM QS2PKB \$22



navy
8X3C05



olive
8X3C21



khaki
8X3C01

TWILL CAP QS8X3C \$22



olive
8X3E21



navy
8X3E03



crimson
8X3E66



brown
8X3E02

TRUCKER CAP QS8X3E \$22



khaki
2PSC01



graphite
2PSC09

UPF 50 BALL CAP QS2PSC \$22



slate



brown
camouflage

QS20CS QS20CZ QS20C6 QS20EA - SEPTEMBER DELIVERY
SOFTSHELL DOG BED | Sizes S-XL

Super durable and field-proven microfiber fabric.

20CS09 small 28"L x 18"W x 3"H for dogs up to 40 lbs **\$89**
20CZ09 medium 36"L x 24"W x 3"H for dogs 40-70 lbs **\$109**
20C609 large 43"L x 29"W x 3"H for dogs 70-100 lbs **\$129**
20EA09 x-large 53"L x 35"W x 4"H for dogs 100+ lbs **\$149**

Polyester. Washable. Imported.

QS2Z6J QS2Z6K QS2Z6L QS2Z6M - SEPTEMBER DELIVERY
COMFORTFILL ROUND DOG'S NEST | Sizes S-XL

The original Dog's Nest in vintage brown camo.

2Z6J12 small 25" dia., dogs up to 25 lbs. **\$79**
2Z6K12 medium 34" dia., dogs 25-45 lbs. **\$98**
2Z6L12 large 41" dia., dogs 45-70 lbs. **\$119**
2Z6M12 x-large 48" dia., dogs 70-100 lbs. **\$139**

Cotton twill. Washable. Imported.



leash in
medium brown
20SR23

collar in
medium brown
20SS23

QS20SR QS20SS - IMMEDIATE DELIVERY - RETAIL PRICE
SHOTSHELL COLLAR AND LEASH | Even sizes 16" - 26"

Handsome leather with signature Orvis Shotshell. Brass hardware.

20SS23 collar **\$35.95**
20SR23 6' leash **\$35.95**

Made in USA.

orange
2GZA42



QS2GZA - IMMEDIATE DELIVERY - \$39.95
NO-STINK REFLECTIVE DOG COLLAR | Sizes S-L

Keep your dog visible and safe in low-light conditions.

Made in USA.



QS8P6X - IMMEDIATE DELIVERY - \$19.95

DOG DRYING TOWEL

Easy to use with hand pockets to dry your dog quickly.

Polyester/nylon. Washable. Imported.

gray
8T2R09



QS8T2R - IMMEDIATE DELIVERY - \$79

ORVIS DOG WEEKENDER TRAVEL KIT

14½"H x 14½"L x 7"D.

Everything you need for the traveling dog in one complete system.

Polyester. Imported.



khaki large
20H102

khaki x-large
20JA02



slate large
20H109

slate x-large
20JA09

QS20H1 QS20JA - IMMEDIATE DELIVERY - RETAIL PRICE

GRIP-TIGHT WINDOWED HAMMOCK SEAT PROTECTOR | Sizes L-XL

Keep your car clean and your dog safe and comfortable. Perfect for short trips or extended travel.

large hammock 66"L x 51"W **\$159**

x-large hammock 66"L x 62"W **\$189**

Polyester. Washable. Imported.



These items are offered in both men's and women's sizing and colorways with identical technology. The only differences between the two are design and fit.



These items are offered in one size option, however the sizing options accommodate both men's and women's sizes.



These items are offered in more sizing than most items in the Orvis line. In men's this often means this item is offered in small and/or XXXL sizing. In women's this means that our bottoms are offered up to size 20.



insect shield®
repellent apparel

The Insect Shield® process binds a proprietary permethrin formula tightly to fabric fibers resulting in effective, odorless insect protection that lasts the expected lifetime of apparel.

Permethrin has been successfully used in the United States as an U.S. environmental protection agency (EPA)-registered product since 1977, with an excellent safety record. It is used in lice shampoos for children, flea dips for dogs, and various other products, some of which are regulated by the FDA.



30: Very good UV protection. Approximate % UV blocked: 96.0% - 97.4%
45+, 50: Excellent UV protection. Approximate % UV blocked: 97.5% - 98.0%



These items are capable of accepting embroidery for custom shop or guide service personalization.



Sweat is natural and odorless but mixed with textiles it creates a moist and warm environment which is ideal for odor-causing bacteria to multiply and grow. Polygiene prevents the growth of odor-causing bacteria and fungi at the source and keeps clothes fresh and odor free for extended wear.



Notes



