

ORVIS[®] **MIRAGE[®] LT**

30% LIGHTER. 30% NARROWER. **100% MIRAGE.**



NEW

THE STORY: MIRAGE LT

The original Mirage® was designed to be the most reliable and durable fly reel on the market, and it was especially designed for larger fish. Trident Fly Fishing, in their exhaustive 8-Weight Shootout, singled out the Mirage as the reel to buy “if you want more durability”. When we designed the Mirage reel we started out making a reel to handle tarpon and other hard-fighting, long-running fish, and then scaled down the series from that beginning. The smaller Mirages have the strongest drag and most durable construction for their size, but they are honestly overbuilt for most trout fishing applications.

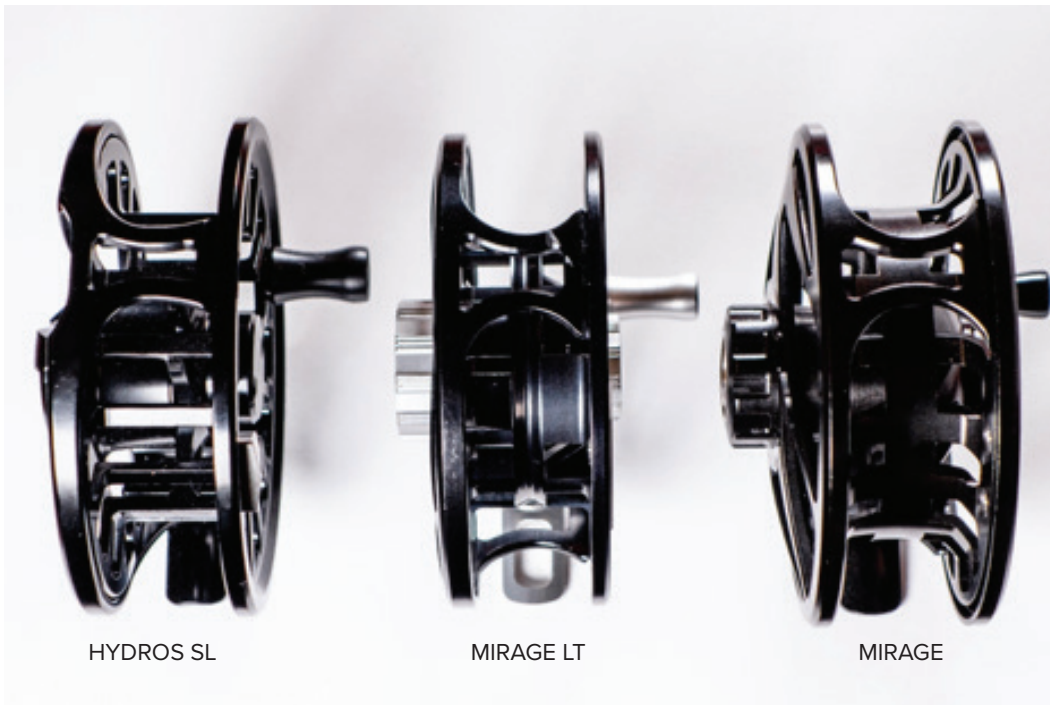
Thus, the Mirage LT. By carefully re-engineering the Mirage, our engineering team and our Vermont machine shop removed 30% of the weight and made the reel 30% narrower to better balance the weight and aesthetics of modern trout rods. It's a stunning gem of a reel, with looks, feel, and sound better than any reel we've ever made.

The Mirage LT has all the technology of the original Mirage Reels, but in a design that is one of the lightest in the industry.

HOW DOES IT DIFFER FROM THE STANDARD MIRAGE?

To make the LT lighter, we re-engineered the frame and spool design, removing material where it was not needed for a lightweight reel, but keeping material where less might sacrifice the long-term durability and structural integrity of the reel. Because we did not need the extreme high end max drag range of the standard Mirage, the number of drag surfaces were reduced from 14 in the standard model to 8 in the LT. And of course, reducing the width of the reel reduced weight and made the reel much more appropriate on lighter rods. We ported the reel foot to further decrease weight without reducing meaningful strength.

To make both the line-in and line-out tension lighter, we reduced the number of drag seals from 12 on the original (which is a redundant system, a “belt and suspenders” approach) to 6 drag seals. The reel still offers a completely sealed design, but it is more appropriate for the less extreme conditions seen in freshwater and light saltwater fly fishing.



In the photo left, all three reels have the same line capacity. From left to right is the Hydros® SL III, Mirage® LT III, and the Mirage III. As you can see, the Mirage LT is considerably lighter and thinner.

ORVIS®

THE STORY: MIRAGE LT

HOW DOES IT COMPARE TO THE HYDROS SL?

It's not a tough upsell to go from a Hydros® SL to the Mirage® LT. The Hydros SL has been a wildly successful reel and is a workhorse, but for an additional \$160 (on average), you get the following additional benefits with the Mirage LT:

- A reel that is 30% lighter for the same line capacity. The Mirage LT is better suited to lightweight trout and smaller big-game rods. Casting is more balanced, and the entire outfit feels lighter in the hand.
- The overall width of the LT is narrower for a better balance and footprint on lighter rods. The spool width is narrower, reducing the problem of line stacking over itself.
- A drag that stays sealed no matter the circumstances. The Hydros SL drag stays sealed only when the spool is locked onto the spindle; if the spool is removed for any reason, the drag is not sealed while the spool remains off the frame. With the Mirage LT, the drag is completely sealed from water and debris all the time, even when the spool is removed.
- Better sound and fit. The Mirage spool exhibits absolutely no wobble when on the frame, and the sound of the reel is much more refined.
- 100% made in USA. This matters to many consumers.

REEL	SIZE	LINE WEIGHT	WEIGHT	DIAMETER	SPOOL WIDTH	COUNTRY OF ORIGIN	DRAG	PRICE
MIRAGE LT	III	5-7 WT	4.5 oz	3.7"	.080"	USA	360-degree drag adjustment (one revolution), completely sealed carbon and stainless	\$379
HYDROS SL	III	5-7 WT	5.9 oz	3.9"	.095"	China	1260-degree drag adjustment (3.5 revolutions), drag sealed only when spool is attached.	\$219

MADE IN USA. REALLY. TOTALLY.

The Mirage Reel is made in the same Vermont high-tech machine shop as the standard Mirage, the Orvis Nippers, and the Orvis Pliers.

Not all “American-Made” reels in the industry are totally made here. Some reels marked as “Made in USA” contain parts that are machined in Asia and assembled in the States. Because the only requirement to mark something “Made in USA” is that the chief value in the product must be produced or assembled here, some reel companies make this claim (which is misleading but legal).

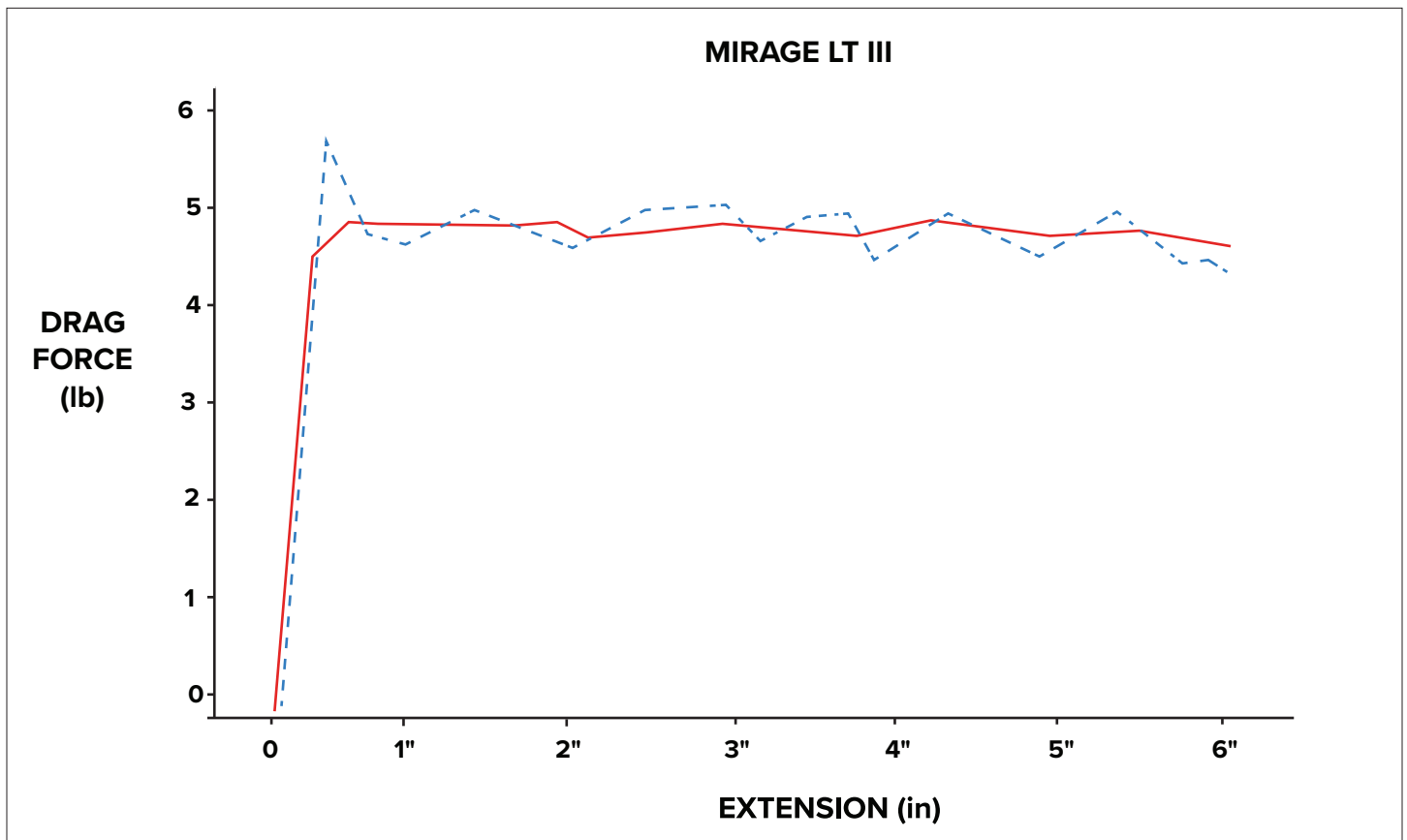
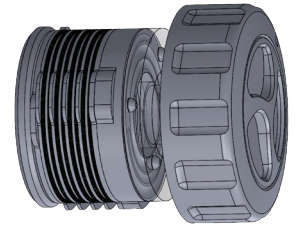
Our Mirage Reels are all made in one shop, and all the parts, except for one Japanese bearing, are produced in the same shop. The reels are even anodized in-house, a rare occurrence in reel manufacturing, ensuring strict quality control.



THE STORY: MIRAGE LT

TOTAL DRAG CONTROL ON THE LOW END

Our patented ball-and-ramp drag adjustment system makes increasing drag at the low end much more precise. This system makes the increase in drag from each click of the drag knob more fine-tuned at the low end with a quick ramp-up to total drag at the high end. The full drag range can be controlled in less than a full turn of the drag knob, reducing fumbling in the heat of a battle, as well as finely adjusted at the low end for the difference between a 6X and 7X tippet.



As with our original Mirage reels, the drag on the Mirage LT reels has zero startup inertia. In other words, if you set your drag at four pounds, when a fish makes its initial run, the drag won't spike up to five pounds first before settling down to the desired drag setting. This prevents breakoffs when a fast-running fish suddenly takes line. This benefit is displayed in the graph above, where drag pressure is measured and plotted against time as line is pulled off the reel on an Instron tester. The red line is the Mirage LT reel and the blue dotted line shows a competitive reel of the same size with startup inertia.

THE STORY: MIRAGE LT

REEL	SIZE	LINE WEIGHT	WEIGHT	DIA.	SPOOL WIDTH	DRAG	PRICE
MIRAGE LT	III	5-7 WT	4.5 oz	3.7"	.080"	360-degree drag adjustment, sealed carbon and stainless	\$379
MIRAGE	III	5-7 WT	6.2 oz	3.88"	1.05"	360-degree drag adjustment, sealed carbon and stainless	\$579
NAUTILUS X	XM	4-5 WT	4.1 oz	3.5"	1.0"	Sealed carbon and Teflon®	\$345
ROSS EVOLUTION LTX	5/6	5-6 WT	4.65 oz	3.83"	1.08"	Delrin® and aluminum	\$335
LAMSON LITE-SPEED MICRA 5	LS2	4-5 WT	4.19 oz	3.625"	0.98"	Conical drag cassette	\$359
HATCH FINATIC GEN 2	5Plus	5-7 WT	6.2 oz	3.625"	0.94"	Rulon® and Stainless	\$550

HOW DOES IT COMPARE TO THE COMPETITION?

We think it's the best-looking light fly reel out there, but that determination is subjective. What we can tell you is that the reel is lighter and almost \$200 less expensive than the Hatch Finatic Gen 2. This reel also has a full-rim frame for palming unlike the Nautilus X (which only has a partially exposed rim). The Mirage LT also has zero startup inertia, meaning if you set your drag to one pound, when a fish begins running, the drag does not jump up at first to a higher resistance. The Lamson Litespeed Micro, as measured by Trident Fly Fishing in their independent reel evaluation, shows a six percent startup inertia. Even a small amount of startup inertia with a 6X tippet can result in breakoffs when a fish makes its first run.

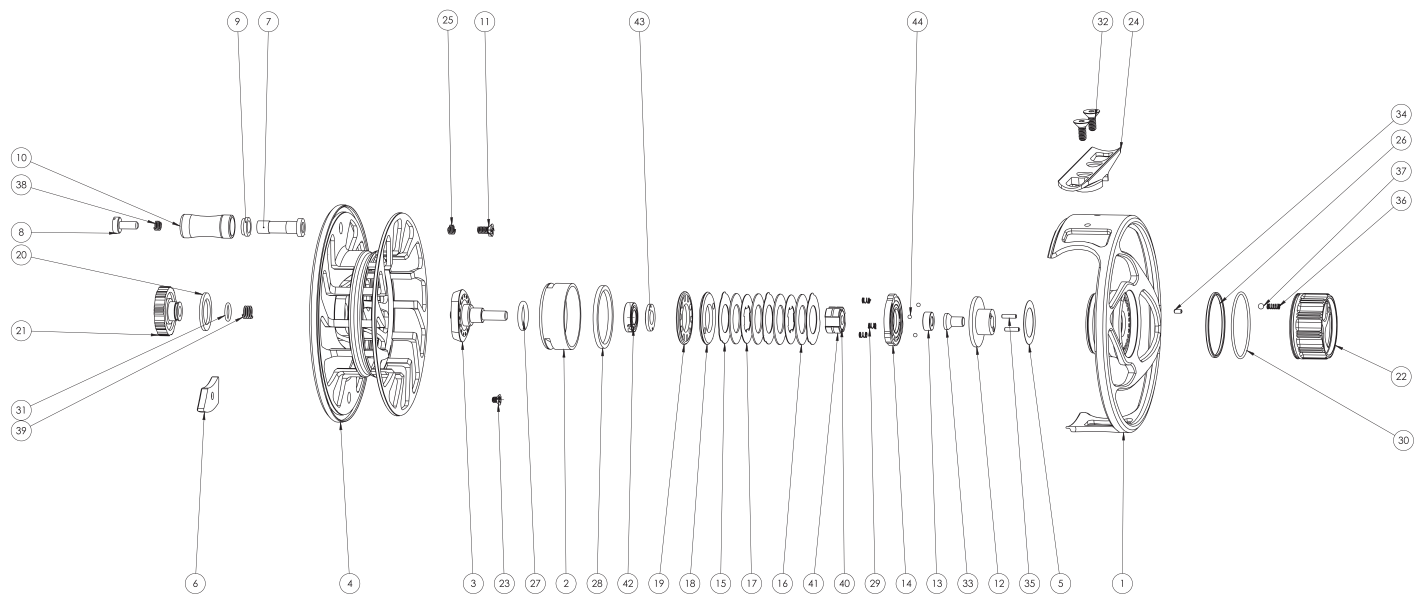
Compared to all other American-made reels in its class, the drag system in the Mirage LT does not utilize any plastic parts. Drag surfaces in competitive reels utilize plastic (Rulon, Delrin), but we feel the carbon-to-stainless drag package in the Mirage is the most durable and the most reliable over time, as it is less likely to deform or compress.

A SOUND AS SWEET AS A CFO

The sound of a reel is a personal matter but adds to the appeal of a reel from some. The sound of the Mirage LT, both in the line-out and line-in directions, is more of a purr, and it just speaks quality. The CFO has always represented the epitome of this sound, but the Mirage LT offers the same quality and adds to the visceral appeal of the moment. The clicker on the reel was redesigned to maximize the smoothness and tone of the reel.

ORVIS®

THE STORY: MIRAGE LT



- | | | | | |
|--------------------|------------------------|------------------------|-----------------------------|---------------------------|
| 1 Frame | 10 Handle | 19 Lock ring | 28 O-ring 2 | 37 Drag Knob Clicker Ball |
| 2 Frame Cap | 11 Handle screw bottom | 20 Spool washer | 29 Preload springs | 38 Helicoil |
| 3 Shaft | 12 Lower thrust plate | 21 Spool knob | 30 O-ring 3 | 39 Helicoil |
| 4 Spool | 13 Brass bushing | 22 Drag knob | 31 O-ring 4 | 40 Clutch bearing |
| 5 Drag knob washer | 14 Upper thrust plate | 23 Counterweight screw | 32 Foot screw | 41 Clutch bearing sleeve |
| 6 Counter weight | 15 Drag disk support | 24 Foot | 33 Drag knob screw | 42 Main bearing |
| 7 Handle shaft | 16 Drag friction disk | 25 Helicoil | 34 Drag knob overtravel pin | 43 Main bearing retainer |
| 8 Handle screw top | 17 Drag disk support 2 | 26 Delrin spacer | 35 Drag knob pin | 44 Thrust plate ball |
| 9 Handle washer | 18 Drag stack retainer | 27 O-ring 1 | 36 Drag knob clicker spring | |

WHAT OUR TESTERS SAID ABOUT IT

“

As for the Mirage LT reel, it's been great. We've taken it to Tennessee on the South Holston along with a number of mountain streams in North Carolina and Pennsylvania. The reel was fantastic when fishing with 7 and 8X. We did get a good number of fish in the mid to upper teen range that did run line off the reel and it was butter smooth.

— *George Daniel, guide and author, Pennsylvania*

I absolutely love it. Not only do I love the looks and design, but the performance is awesome. I would not change anything about it. Looks great and works great. I like that one click changes the drag and you don't have to crank it a number of times. It has worked great on the Missouri for me.

— *Pete Skidmore, guide, Montana*

A lightweight, American made reel that doesn't compromise anywhere. There is smoothness in everything this reel does from setting the drag to fighting a big redfish well into the backing. The Mirage LT is being used in my Hell's Bay skiff every day and it is going to stay that way for a reason.

— *Captain Tuck Scott, saltwater guide, South Carolina*

”