

ORVIS®

ROD AND TACKLE

Battenkill Large Arbor Trout

INTRODUCTION

With the proven drag system of our Battenkill Mid Arbor Trout Reel and the benefits of a large arbor reel, the BLA reel offers maximum line pick up, optimum drag consistency, and superior fish-stopping power.

- Center line drag with a carbon and stainless steel surface to fight big fish
- Precision-machined and anodized from 6061 aircraft-grade aluminum
- Heavily ventilated for optimum weight and balance on your fly rod
- Indexed and numbered drag knob for repeatable drag adjustment
- Easily interchangeable spool

DRAG OPERATION

BLA Trout reels feature a dependable center line drag system. To adjust the drag, turn the knob (figure 1) clockwise to increase resistance, and counterclockwise to decrease it. The minimum drag setting should never be less than the pressure required to prevent over-running of the line on fast runs. Additional drag may be applied by palming the spool rim with your fingers or palm. The easy drag adjustment is infinitely variable, providing wide-ranging and controllable settings.



FIGURE 1

SPOOL REMOVAL

The spool release is located in the middle of the reel spool. To remove, depress the spool release latch while simultaneously lifting the spool out of the reel body.

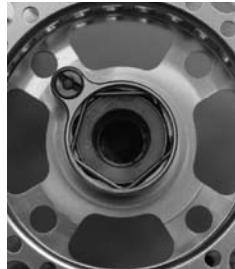


FIGURE 2

RETRIEVAL CONVERSION

All Battenkill Large Arbor reels have the drag factory installed for left-hand wind (figure 2). To change your reel to right-hand wind, unclip the one-way retainer (part #20) by squeezing the retaining tags. Remove one-way bearing (part #21) and flip over. Replace clutch retainer.

ROUTINE MAINTENANCE

Your new Battenkill Large Arbor reel has been properly lubricated prior to shipping. However, it should be cleaned and lubricated after extensive use or after contact with dirt or sand. Your reel should receive routine cleaning and maintenance at least twice each year. Lightly lubricate all moving components—handle, center spindle, and gear shaft with Penn reel lube, which is available in tackle shops. Do not put the reel away wet, or into a wet reel case or tackle box. For extended storage, remove both line and backing and loosen the drag.

GUARANTEE

Your Battenkill Large Arbor Trout reel is unconditionally guaranteed against defects in materials and workmanship.

If you have any problems, simply send your reel and a \$10 check to the following address:

By USPS Mail: Orvis; Overhaul Services; 178 Conservation Way; Sunderland, VT 05250.

By FedEx or UPS: Orvis; Overhaul Services; 4182 Main St.; Manchester, VT 05254. If the reel is in any way defective in material or workmanship, your \$10 repair check will be returned to you at once.

Your reel will be completely serviced (cleaned, lubricated, and returned to you postpaid) for a fee of \$10, plus cost of parts.

Damaged reels can be repaired on an individual basis and repair work will be billed at the hourly shop rate, plus parts. We will provide a written estimate upon receipt of the reel prior to any work being done.

QUESTIONS?

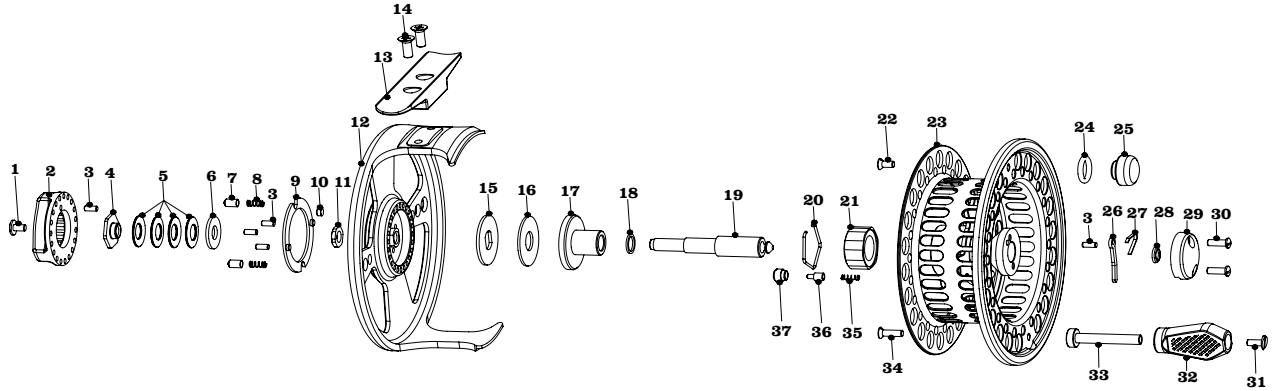
If you have any questions about the operation and maintenance of your new reel, Orvis Technical Advisors are always available.

Email: info@orvis.com. Phone: 1-800-778-4778.

ORVIS®

ROD AND TACKLE

Battenkill Large Arbor Trout



REEL ASSEMBLY

- | | | | |
|----------------------------|----------------|------------------------------|--------------------|
| 1 Drag Knob Screw | 11 Spindle Nut | 21 One-Way Bearing | 31 Knob Screw |
| 2 Drag Knob | 12 Frame | 22 Counter Weight Screw | 32 Handle Knob |
| 3 Pin | 13 Foot | 23 Spool | 33 Spindle |
| 4 Drag Nut | 14 Foot Screw | 24 O-Ring | 34 Knob Screw 1 |
| 5 Spring Washer | 15 Push Plate | 25 Counter Weight | 35 Clicker Spring |
| 6 Spacer | 16 Drag Washer | 26 Quick-Release Key | 36 Clicker |
| 7 Drag Knob Clicker | 17 Bushing | 27 Quick-Release Spring | 37 Clicker Housing |
| 8 Drag Knob Clicker Spring | 18 Washer | 28 Quick-Release Cover Pad | |
| 9 Plastic Plate | 19 Spindle | 29 Quick-Release Cover | |
| 10 Drag Knob Stopper | 20 Spring Clip | 30 Quick-Release Cover Screw | |

BATTENKILL LARGE ARBOR TROUT Capacity Chart			
LINE WEIGHT	I	II	III
WF1	100		
WF2	75		
WF3	50	125	
WF4		100	
WF5		75	150
WF6			125
WF7			100

Battenkill Large Arbor Trout Fly Reel Specifications

- I Reel | weight: 3.9 oz. | 3 inches
- II Reel | weight: 4.1 oz. | 3¼ inches
- III Reel | weight: 4.4 oz. | 3⅝ inches

Capacity in Yards

All capacities are quoted using 20-lb Dacron® backing.