

ORVIS®

ROD AND TACKLE

Vortex V0₂ Reel

INTRODUCTION

Vortex V0₂ fly reels features include:

- Fully machined from 6262 T6 bar stock aerospace-grade aluminum with an anodized finish for durability.
- More drag surface than any other reel in its class.
- Easily interchangeable spool.
- Left- to right-hand changeover in seconds with absolutely no tools required, just a nickel or a dime.
- Smooth and dependable drag system.
- Generous backing capabilities.

DRAG OPERATION

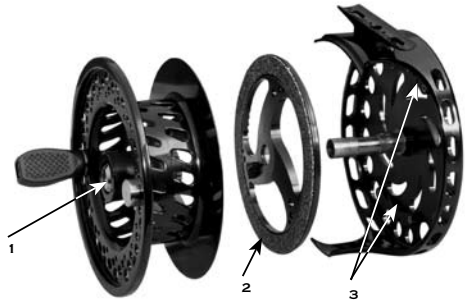
Vortex V0₂ reels feature a unique external radius drag system to ensure the most surface area in its class.

To adjust the drag, turn the knob clockwise to increase resistance, and counterclockwise to decrease it. The minimum drag setting should never be less than the pressure required to prevent over-running of the line on fast runs. Additional drag may be applied by palming the spool rim with your fingers or palm.

SPOOL REMOVAL

*Note: Spools for original Vortex reels ARE NOT compatible with V0₂ reels.

The spool releases with the turning of the screw in the middle of the reel. (figure 1). To remove, use a nickel or appropriately-sized screwdriver and rotate counterclockwise. The screw will remain in the spool housing even when fully unthreaded. Lift the spool out of the reel body.



RETRIEVAL CONVERSION

Vortex V0₂ reels have the drag factory installed for left-hand wind. To change your reel to left-hand wind, remove the spool as above. Lift the cork composite drag surface disk (figure 2) off the center spindle. You will see two drag engage pawls, one on top and one on bottom (figure 3). Move the pawl from “L” to “R” on both as indicated on the pawl housing. Return the cork composite drag surface disk back onto the spindle.

ROUTINE MAINTENANCE

Your new Vortex V0₂ reel has been properly lubricated prior to shipping. However, it should be cleaned and lubricated after extensive use or after contact with dirt, sand, or saltwater. Your reel should receive routine cleaning and maintenance at least twice each year. Lightly lubricate all moving components—handle, center spindle, and gear shaft with Penn Reel Lube, available in tackle shops. After lubrication, check screws for proper tightness. Do not put the reel away wet, or into a wet reel case or tackle box.

Following use in saltwater, the reel should be rinsed in fresh water and all parts, except drag surfaces, lightly oiled. The body and spool should be wiped with a lightly oiled cloth.

For extended storage, remove both line and backing and loosen the drag.

GUARANTEE

Your Orvis V0₂ reel is unconditionally guaranteed against defects in materials and workmanship.

If you have any problems, simply send your reel and a \$15 check to the following address:

By USPS Mail: Orvis; Overhaul Services; 178 Conservation Way; Sunderland, VT 05250.

By FedEx or UPS: Orvis; Overhaul Services; 4182 Main St.; Manchester, VT 05254.

If the reel is in any way defective in materials or workmanship, your \$15 repair check will be returned to you at once.

Your reel will be completely serviced (cleaned, lubricated, and returned to you postpaid) for a fee of \$15 plus cost of parts.

Damaged reels can be repaired on an individual basis and repair work will be billed at the hourly shop rate plus parts. We will provide a written estimate upon receipt of the reel prior to any work being done.

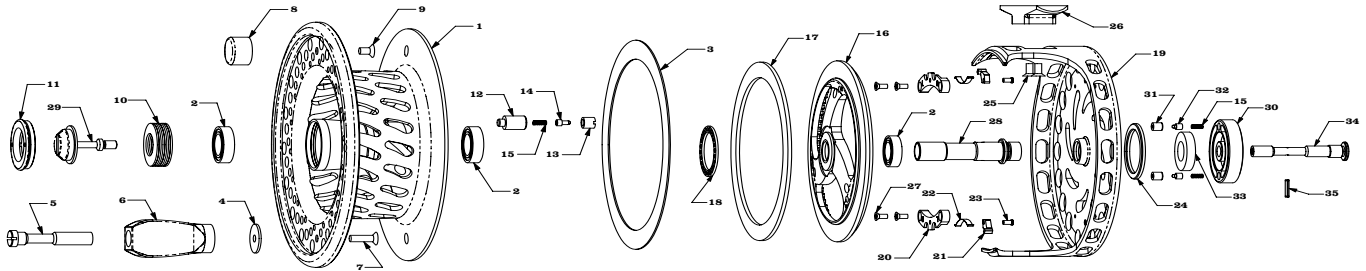
QUESTIONS?

If you have any questions you have about the operation and maintenance of your new reel, Orvis Technical Advisors are always available. Email: info@orvis.com. Phone: 1-800-778-4778.

ORVIS®

ROD AND TACKLE

Vortex V0₂ Reel



REEL ASSEMBLY

- | | | | |
|-----------------------|-------------------------|--------------------------|--|
| 1 Spool | 10 Drag Spring | 19 Frame | 28 Frame Shaft |
| 2 Bearing | 11 Spool Retaining Ring | 20 Pawl Holder | 29 Drag Screw |
| 3 Rulon® Washer | 12 Clicker Housing | 21 Pawl | 30 Drag Knob |
| 4 Handle Washer | 13 Clicker Ferrule | 22 Pawl Spring | 31 Drag Knob Detent
Plunger Housing |
| 5 Handle Shaft | 14 Clicker Plunger | 23 Pawl Shaft | 32 Drag Knob Detent Plunger |
| 6 Handle | 15 Coil Spring | 24 Drag Knob Detent Ring | 33 Drag Knob Brushing |
| 7 Handle Screw | 16 Friction Disc | 25 Foot Screw | 34 Drag Knob Shaft |
| 8 Counterweight | 17 Cork Washer | 26 Foot | 35 Spring Pin |
| 9 Counterweight Screw | 18 Clicker Detent Ring | 27 Pawl Holder Screw | |

VORTEX V0 ₂ REEL Capacity Chart (WF Lines)				
LINE WEIGHT	III	IV	V	VI
WF5	150*			
WF6	125*			
WF7	100*	225		
WF8		200		
WF9		175	250	
WF10			225	
WF11			200	350
WF12				325
WF13				300

Vortex V0₂ Reel Specifications

III Reel weight: 6.4 oz. | 3¾ inches
IV Reel weight: 9.1 oz. | 4 inches

V Reel weight: 10 oz. | 4¼ inches
VI Reel weight: 11.9 oz. | 4½ inches

Capacity in Yards

*Indicates 20-lb Dacron® backing. All other capacities are quoted in yards using 30-lb Dacron backing.