



ORVIS®

HYDROS HD

TEXTURED FLY LINES



HYDROS HD

TEXTURED FLY LINES



Hydros HD lines are our first dual textured lines. The front taper is made from an aggressive diamond pattern, and the remaining line is made from a less aggressive dimpled surface that is easier on the hands and does not make as much noise in the guides.



HD Line

dual-textured surface for more distance, less memory, and increased durability



Integrated Slickness

provides lubrication for maximum distance, performance, and durability



Front and Rear Loops

for quick and easy line and leader attachment or removal



Line ID

easily identify line type and weight



Hydros HD Trout

How are they different from previous 3D lines?

Our previous textured lines were made with the dimpled, less aggressive surface on the entire line. They did not have the more aggressive diamond pattern on the front end.

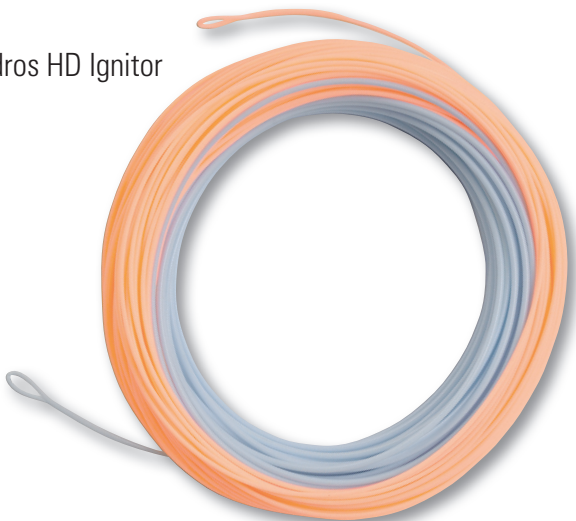
What advantages do they offer?

The textures on both parts of the line offer a number of advantages. The biggest advantage is that they shoot better and smoother, which means longer casts and better accuracy because the line flows more smoothly through the guides, thus it shoots further with the same effort and tracks better. Combined with the superb tracking of rods like the H2 or Recon this gives a big advantage to the caster.

Textured lines also track better in the air, with less air resistance, because the patterns break up air flow, which is the reason they use patterns on golf balls as opposed to a smooth surface. The more aggressive texture on the front end of the line slices through the air, enabling better casts in the wind and longer casts under any conditions.

The patterns also offer a great surface-to-volume ratio, and along with air bubbles trapped within the patterns offer great floating qualities.

Hydros HD Ignitor



“I have to keep coming back to the fact that it stays clean, even after dragging it through some scum on top of the water I came home and cleaned it and got very little off, where with other lines in the past I would have seen tons of dirt on the cloth.”

—Capt. Tuck Scott,
Bay Street Outfitters,
Beaufort, South Carolina



“Had an opportunity to fish the 8-wt Hydros HD Ignitor. I thought it cast well, with just the right amount of stiffness and no tangling. Wasn’t too hard on the fingers or too noisy. I haven’t fished a lot of textured fly lines and as hard as our reds can be to catch, I was concerned about the noise factor. However, my client hooked a red on one of his first casts so no problem there. He also like the way the line cast.”

— Capt. Rick Grasset,
CB’s Saltwater Outfitters,
Sarasota, Florida

What happened to Wonderline Coating?

We performed extensive tests with our Wonderline post-process coating against the IS (Integrated Slickness) process that is part of the final coating on the lines. We found that although the Wonderline coating offered a slight advantage over IS right out of the box, over time the IS process stayed slicker and the Wonderline coating lost its efficiency. Thus we feel the IS is a better process, offering superior slickness over a much longer period. Lines will perform better over their life with IS than with Wonderline.



“Lines are great! Ridiculously low friction, ride high in the water, cast very smooth and easy.”

— Colby Trow,
Mossy Creek Fly Shop

How are they different than Scientific Anglers Shark Wave Lines?

Although Orvis owns Scientific Anglers, our lines are not just re-labeled SA lines.

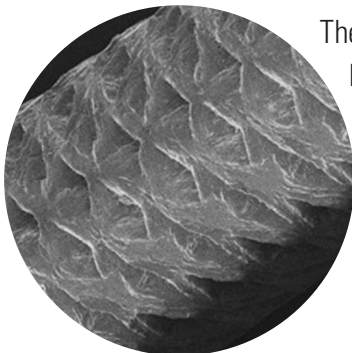
The Orvis lines do not have the smooth 30-inch transition section (“Tactile Reference Point”) between the front and rear textures. We didn’t feel this was a necessary part of the lines.

Orvis lines are in our own proprietary tapers. Just as an example, the Orvis 3D Trout line has a compound front taper where the SA SharkWave Ultimate Trout line has a straight taper. Our belly is also slightly shorter than in the SA line, as is our rear taper. But each of our lines differs from the SA line tapers in different ways, according to what we have found in our testing and evaluation.

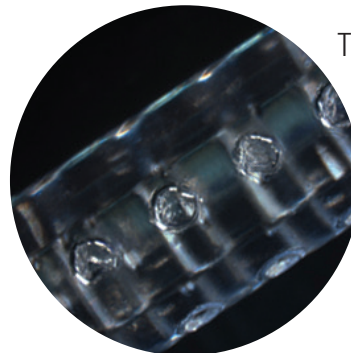


“They certainly have held up through my ringer, that’s for sure. Not to mention, float high, mend well and are just a damn fine line.”

— Matt Millner,
Jamie Rouse Fly-Fishing
Adventures, Heber Springs,
Arkansas



The aggressive diamond pattern on the front end of Hydros HD lines ensures that the front end of the casting loop receives maximum wind-cutting power.



The dimpled surface of the rest of the Hydros HD lines also aids in air resistance and slips easily through the guides, without undue noise or abrasion to your fingers.

HYDROS HD

FRESHWATER



= aggressive diamond pattern

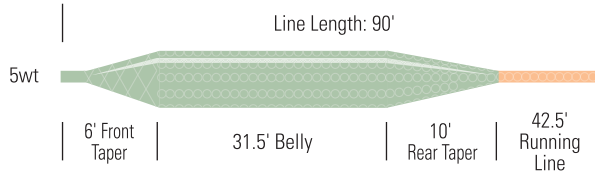


= dimpled surface

FRESHWATER



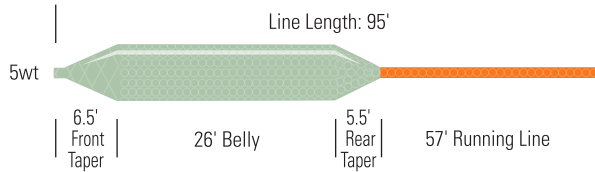
HYDROS HD TROUT



- item #17FL
- universal trout
- 3-6 weight
- willow/pale orange
- \$98.00



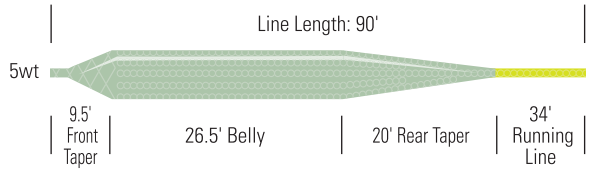
HYDROS HD POWER TAPER



- item #17FM
- quick-loading
- 4-8 weight
- willow/fluorescent orange
- \$98.00



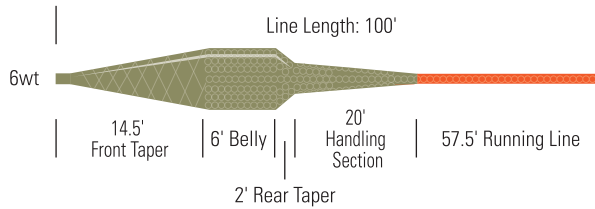
HYDROS HD EASY MEND



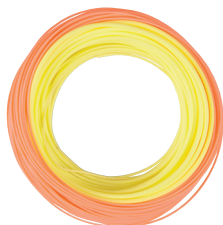
- item #17FN
- get the drift
- 4-6 weight
- willow/chartreuse
- \$98.00



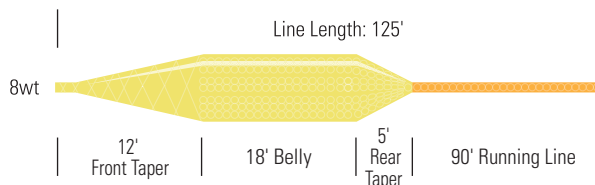
HYDROS HD BANK SHOT



- item #17FS
- pound the banks
- 5-10 weight
- dark willow/orange
- \$98.00



HYDROS HD SWITCH



- item #17FT
- switch it up
- 5-9 weight
- yellow/salmon
- \$98.00

HYDROS HD

COMBO & SALTWATER



= aggressive diamond pattern

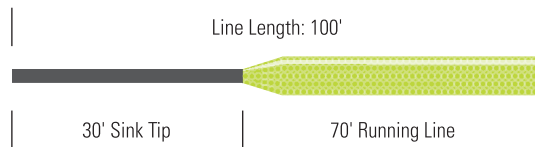


= dimpled surface

FRESH & SALT



HYDROS HD DEPTH CHARGE

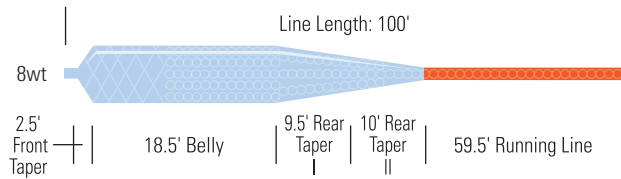


- item #19BM
- gets line down
- 150-550 grain
- color varies by size
- \$98.00

SALT



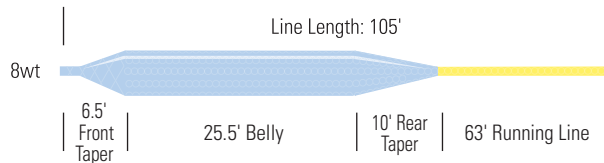
HYDROS HD IGNITER



- item #17FR
- fast targeting
- 8-12 weight
- blue/orange
- \$98.00



HYDROS HD BONEFISH



- item #17FP
- delicate presentation
- 7-10 weight
- blue/yellow
- \$98.00