

# ORVIS®

## ROD AND TACKLE

### CFO

#### INTRODUCTION

Updating a classic, the CFO tastefully blends modern performance-enhancing design and technology under a traditional-looking skin. Features include:

- Two internal radial stainless steel reel bearings.
- Line guard is machined into the reel cage.
- Modified machined design is lighter.
- Impregnated wood handle.
- Brown/bronze anodized matte finish.
- Disc drag.

#### DRAG OPERATION

Orvis CFO Disc Reels feature an adjustable disc drag system. The pressure exerted on the disc determines the drag pressure and may be adjusted by turning the drag adjustment knob located on the back of the reel frame.

To increase the drag, turn the drag adjustment knob (figure 1) clockwise. To decrease it, turn the knob counterclockwise. Sufficient drag pressure must always be applied when fighting a fish to prevent line overrun. Additional drag may be applied by palming the spool rim with your fingertips or palm.



Figure 1

#### SPOOL REMOVAL

The spool release latch is located in the middle of the reel spool. To remove the spool, depress the spool release latch (figure 2) while lifting the spool out of the reel frame.



Figure 2

#### CONVERTING TO RIGHT-HAND RETRIEVE

Your new CFO Reel has the drag pawl factory-installed for left-hand wind.

To change your CFO Reel to right-hand wind, depress the spool latch release and remove the spool. On the backside of the spool, you will see a spool gear that has three screws fastening it to the spool.

1. Remove the three clutch screws then remove the spool gear from the spool.
2. Find the clutch bearing. It will either be inside the spool gear or still on the spool (figure 3).
  - If the bearing stays with the gear upon removal, use a small screwdriver to push the bearing out.
  - If the bearing was in the spool upon removal of the spool gear, use a pair of pliers to remove it from the spool.
3. Remove the bearing, flip it over, and replace it in the the spool gear.
4. Replace spool gear with the three clutch screws.
5. After you have reassembled the spool gear, remove the click pawl, flip it over, and replace it on the reel frame to complete the conversion.



Figure 3

#### ROUTINE MAINTENANCE

Your new Orvis CFO reel has been properly lubricated prior to shipping. However, it should be cleaned and lubricated after extensive use or after contact with dirt, sand, or saltwater. Your reel should receive routine cleaning and maintenance at least twice each year. Lightly lubricate all moving components—handle, center spindle, and gear shaft with Penn reel lube, available in tackle shops. After lubrication, check screws for proper tightness. Do not put the reel away wet, or into a wet reel case or tackle box.

Following use in saltwater, the reel should be rinsed in fresh water and all parts, except drag surfaces, lightly oiled. The body and spool should be wiped with a lightly oiled cloth.

For extended storage, remove both line and backing and loosen the drag.

#### QUESTIONS?

If you have any questions about the operation and maintenance of your new reel, Orvis Technical Advisors are always available. Email: [info@orvis.com](mailto:info@orvis.com). Phone: 1-800-778-4778.

#### GUARANTEE

Your Orvis CFO reel is unconditionally guaranteed against defects in materials and workmanship.

If you have any problems, simply send your reel and a \$10 check to the following address:

By USPS Mail: Orvis Reel Service; PO Box 798; Manchester, VT 05254.

By FedEx or UPS: Orvis Reel Service; Tennis Way, Rt. 7A; East Dorset, VT 05253.

If the reel is in any way defective in material or workmanship, your \$10 repair check will be returned to you at once.

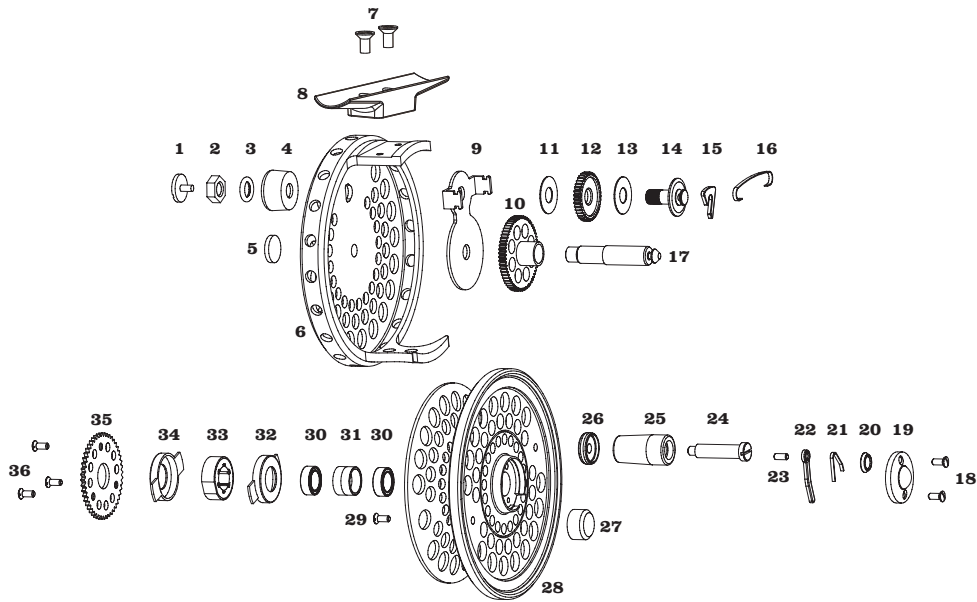
Your reel will be completely serviced (cleaned, lubricated, and returned to you postpaid) for a fee of \$10, plus cost of parts.

Damaged reels can be repaired on an individual basis and repair work will be billed at the hourly shop rate, plus parts. We will provide a written estimate upon receipt of the reel prior to any work being done.

# ORVIS®

## ROD AND TACKLE

### CFO



#### REEL ASSEMBLY

- |                      |                         |                              |                           |
|----------------------|-------------------------|------------------------------|---------------------------|
| 1 Drag Screw         | 12 Drag Gear            | 23 Spool Release Pin         | 33 One-Way Clutch Bearing |
| 2 Drag Nut           | 13 Rulon Drag Washer    | 24 Handle Knob Spindle Screw | 34 Clutch Retainer        |
| 3 Drag Washer        | 14 Drag Gear Cap        | 25 Handle Knob               | 35 Spool Gear             |
| 4 Drag Knob          | 15 Clicker Pawl         | 26 Handle Knob Retainer      | 36 Spool Gear Screws      |
| 5 Spindle Cap        | 16 Clicker Spring       | 27 Counter Weight            |                           |
| 6 Reel Body          | 17 Spindle              | 28 Spool                     |                           |
| 7 Reel Foot Screws   | 18 Spool Release Screws | 29 Counter Weight Screw      |                           |
| 8 Reel Foot          | 19 Spool Release Cap    | 30 Radial Bearings           |                           |
| 9 Clicker Retainer   | 20 Spool Release Washer | 31 Spindle Spacer            |                           |
| 10 Clutch Gear       | 21 Spool Release Clip   | 32 Clutch Retainer           |                           |
| 11 Rulon Drag Washer | 22 Spool Release Spring |                              |                           |

CFO DISC DRAG FLY REELS Capacity Chart			
LINE WEIGHT	I	II	III
WF1	100 yds		
WF2	75	125 yds	
WF3	50	100	
WF4		75	75 yds
WF5			50
WF6			25

#### CFO Reel Specifications

CFO I weight: 3½ oz. | CFO II weight: 3¾ oz. | CFO III weight: 3¼ oz.

#### Capacity in Yards

Stated capacities are based on Orvis 20-lb. Dacron® backing and a 90-ft weight forward floating fly line. If a double taper fly line is desired, deduct 50 yards from stated capacities.