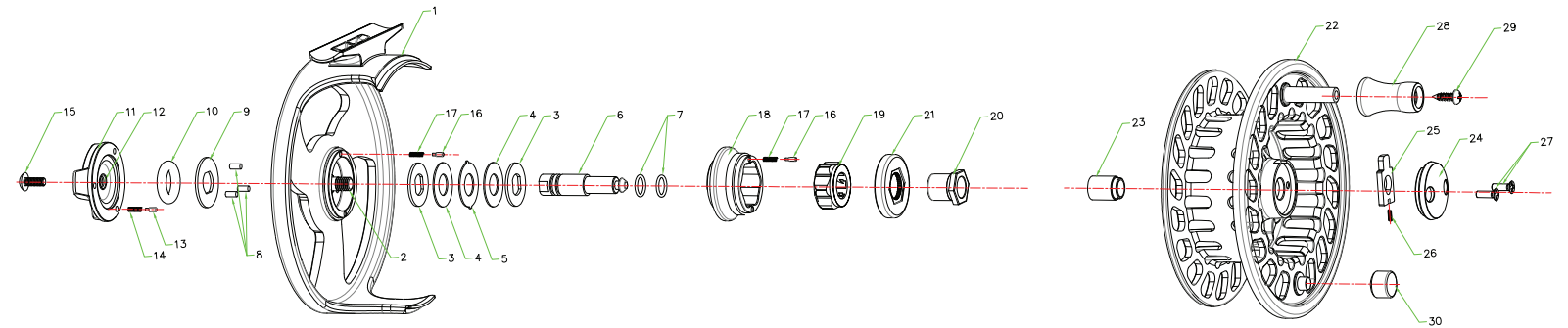
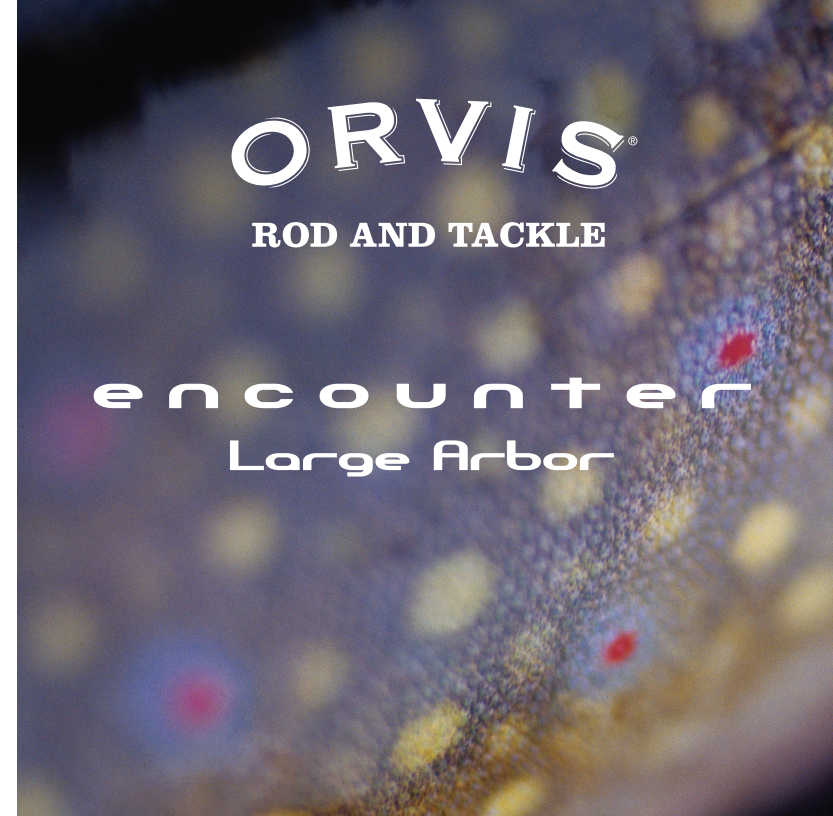




THE ORVIS COMPANY  
 MANCHESTER VERMONT 05254  
 visit [orvis.com](http://orvis.com)  
 MADE IN KOREA



- |                             |                             |                             |
|-----------------------------|-----------------------------|-----------------------------|
| <b>1</b> Frame              | <b>11</b> Drag Knob         | <b>21</b> Clicker Plate     |
| <b>2</b> Frame Insert Shaft | <b>12</b> Drag Knob Insert  | <b>22</b> Spool             |
| <b>3</b> Pressure Plate     | <b>13</b> Drag Knob Clicker | <b>23</b> Spool Bush        |
| <b>4</b> Drag Washer        | <b>14</b> Clicker Spring    | <b>24</b> Spool Cap         |
| <b>5</b> Friction Plate     | <b>15</b> Drag Knob Screw   | <b>25</b> Spool Retainer    |
| <b>6</b> Main Shaft         | <b>16</b> Spindle Clicker   | <b>26</b> Retainer Spring   |
| <b>7</b> O-ring             | <b>17</b> Clicker Spring    | <b>27</b> Spool Cap Screw   |
| <b>8</b> Push Pin           | <b>18</b> Drag Spindle      | <b>28</b> Handle Knob       |
| <b>9</b> Push Plate         | <b>19</b> Clutch Bearing    | <b>29</b> Handle Knob Screw |
| <b>10</b> O-Ring            | <b>20</b> Keyed Bush        | <b>30</b> Counter Weight    |



**ORVIS**  
 ROD AND TACKLE

**encounter**  
 Large Arbor

## INTRODUCTION

The all new Orvis Encounter Large Arbor is a value-priced reel with all the credentials of a much higher-priced large arbor. Made of a molded composite, the Encounter is extremely lightweight, but the inline drag system is the most powerful in its price class. Easy right- and left-hand conversion with a positive click drag knob to allow for consistent drag settings. For the budget-minded angler or a first reel, the Orvis Encounter Large Arbor is a no compromise option.

## DRAG OPERATION

Encounter reels feature a dependable center line drag system with positive-click adjustment. To adjust the drag, turn the knob (figure 1) clockwise to increase resistance, and counterclockwise to decrease it. The minimum drag setting should never be less than the pressure required to prevent over-running of the line on fast runs. Additional drag may be applied by palming the spool rim with your fingers or palm. The easy drag adjustment is infinitely variable, providing wide-ranging and controllable settings.



FIGURE 1

## SPOOL REMOVAL

The spool release is located in the middle of the reel spool. To remove, depress the spool release latch while simultaneously lifting the spool out of the reel body.

## RIGHT-HAND CONVERSION

All Encounter Large Arbor reels have the drag factory installed for left-hand wind (figure 2). To change your reel to right-hand wind, remove spool, pull the keyed bush and clicker plate assembly (part # 20, 21) off the spindle. Flip the clutch bearing (part #19) and reassemble.

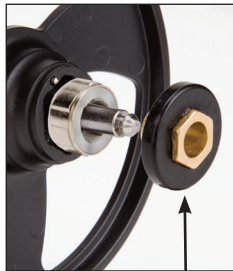


FIGURE 2 (PART #20, 21)

## ROUTINE MAINTENANCE

Your new Encounter Large Arbor reel has been properly lubricated prior to shipping. However, it should be cleaned and lubricated after extensive use or after contact with dirt or sand. Your reel should receive routine cleaning and maintenance at least twice each year. Lightly lubricate all moving components—handle, center spindle, and gear shaft with Penn reel lube, which is available in tackle shops. Do not put the reel away wet, or into a wet reel case or tackle box. For extended storage, remove both line and backing and loosen the drag.

## ENCOUNTER LARGE ARBOR Capacity Chart

LINE WEIGHT	II	IV
WF4	125	
WF5	100	
WF6	75	
WF7		225
WF8		200
WF9		175

## Encounter Large Arbor Fly Reel Specifications

II Reel | weight: 4.34 oz. | 3½ inches

IV Reel | weight: 4.98 oz. | 3¾ inches

## Capacity in Yards

All capacities are quoted using 20-lb Dacron® backing.

## GUARANTEE

Your Encounter Large Arbor reel is unconditionally guaranteed against defects in materials and workmanship.

If you have any problems, simply send your reel and a \$10 check to the following address:

**By USPS Mail:** Orvis; Overhaul Services; 178 Conservation Way; Sunderland, VT 05250.

**By FedEx or UPS:** Orvis; Overhaul Services; 4182 Main St.; Manchester, VT 05254. If the reel is in any way defective in material or workmanship, your \$10 repair check will be returned to you at once.

Your reel will be completely serviced (cleaned, lubricated, and returned to you postpaid) for a fee of \$10, plus cost of parts.

Damaged reels can be repaired on an individual basis and repair work will be billed at the hourly shop rate, plus parts. We will provide a written estimate upon receipt of the reel prior to any work being done.

## QUESTIONS?

If you have any questions about the operation and maintenance of your new reel, Orvis Technical Advisors are always available.

E-mail: [info@orvis.com](mailto:info@orvis.com). Phone: 1-800-778-4778.