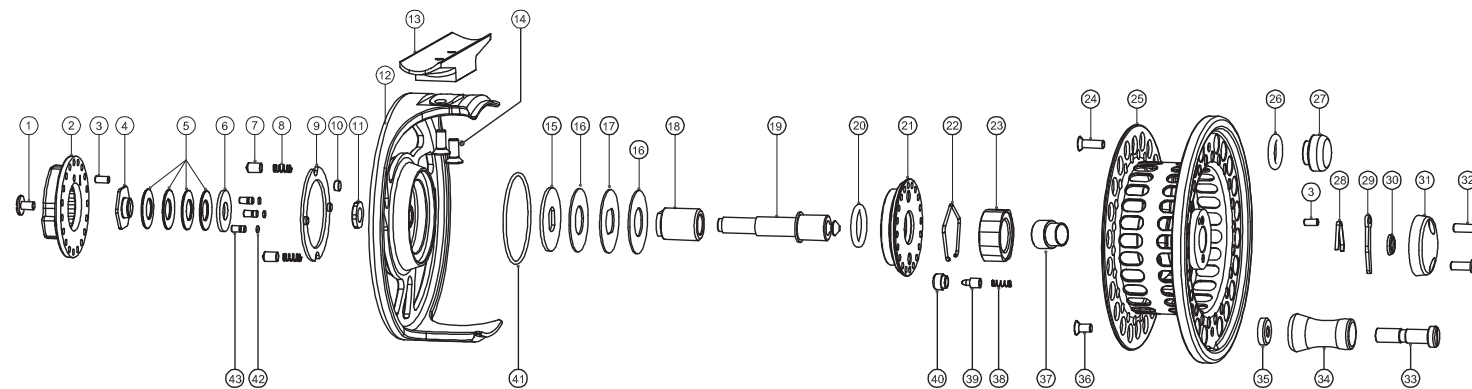


THE ORVIS COMPANY
 MANCHESTER, VERMONT 05254
 visit orvis.com
 Made in China

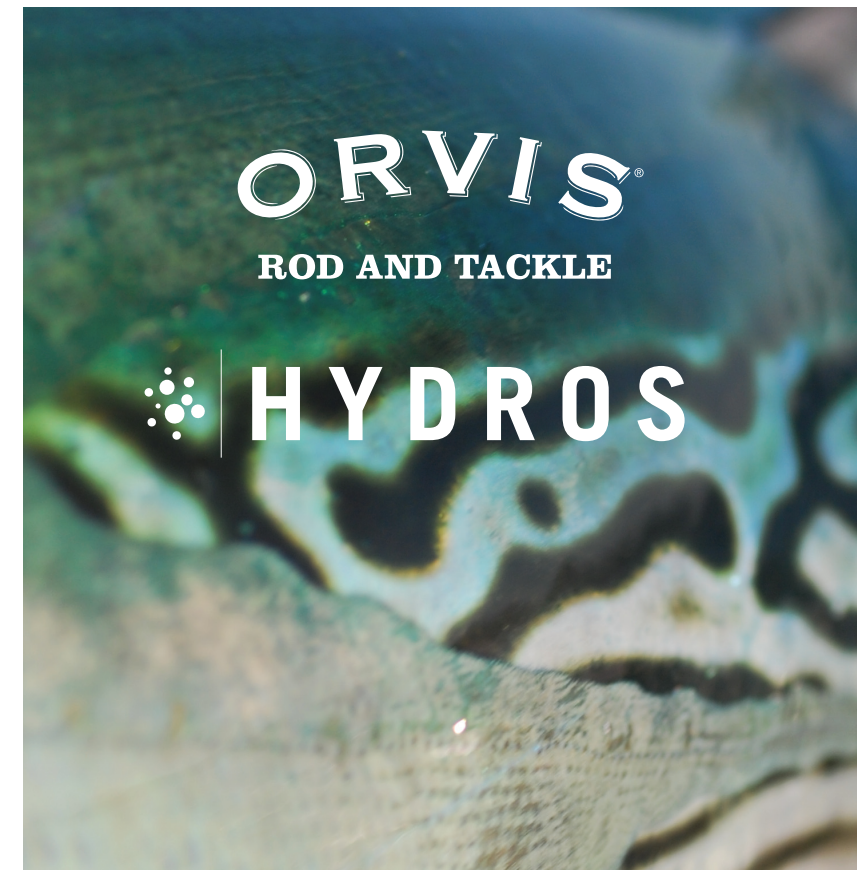


- 1 Drag Knob Screw
- 2 Drag Knob
- 3 Pin 1
- 4 Drag Nut
- 5 Spring Washer
- 6 Spacer
- 7 Drag Knob Clicker
- 8 Drag Knob Clicker Spring
- 9 Plastic Plate
- 10 Drag Knob Stopper
- 11 Spindle Nut

- 12 Frame
- 13 Foot
- 14 Foot Screw
- 15 Push Plate
- 16 Drag Washer
- 17 Drag Disc 1
- 18 S.S. Bushing
- 19 Spindle
- 20 O-Ring 2
- 21 Frame Lid
- 22 Spring Clip

- 23 One-Way Bearing
- 24 Counterweight Screw
- 25 Spool
- 26 O-Ring 1
- 27 Counterweight
- 28 Quick-Release Spring
- 29 Quick-Release Key
- 30 Quick-Release Cover Pad
- 31 Quick-Release Cover
- 32 Quick-Release Cover Screw
- 33 Handle Shaft

- 34 Handle Knob
- 35 Handle Washer
- 36 Handle Screw
- 37 Brass Bushing
- 38 Clicker Spring
- 39 Clicker
- 40 Clicker Housing
- 41 O-Ring 3
- 42 O-Ring 4
- 43 Pin 2



INTRODUCTION

With a proven, sealed drag system and the benefits of a large arbor reel, the Hydros reel offers maximum line pick up, optimum drag consistency, and superior fish-stopping power.

- Center line drag with a carbon and stainless steel surface to fight big fish
- Precision-machined and anodized from 6061 aircraft-grade aluminum
- Heavily ventilated for optimum weight and balance on your fly rod
- Indexed drag knob for repeatable drag adjustment
- Easily interchangeable spool

DRAG OPERATION

Hydros reels feature a dependable center line drag system. To adjust the drag, turn the knob (figure 1) clockwise to increase resistance, and counterclockwise to decrease it. The minimum drag setting should never be less than the pressure required to prevent over-running of the line on fast runs. Additional drag may be applied by palming the spool rim with your fingers or palm. The easy drag adjustment is infinitely variable, providing wide-ranging and controllable settings.



FIGURE 1

SPOOL REMOVAL

The spool release is located in the middle of the reel spool. To remove, depress the spool release latch while simultaneously lifting the spool out of the reel body.

RIGHT-HAND CONVERSION

All Hydros reels have the drag factory installed for left-hand wind (figure 2). To change your reel to right-hand wind, unclip the one-way retainer spring clip (part #22) by squeezing the retaining tags. Remove one-way bearing (part #23) and flip over. Replace clutch retainer.



FIGURE 2 (PART #22)

ROUTINE MAINTENANCE

Your new Hydros reel has been properly lubricated prior to shipping. However, it should be cleaned and lubricated after extensive use or after contact with dirt or sand. Your reel should receive routine cleaning and maintenance at least twice each year. Lightly lubricate all moving components—handle, center spindle, and gear shaft with Penn reel lube, which is available in tackle shops. Do not put the reel away wet, or into a wet reel case or tackle box. For extended storage, remove both line and backing and loosen the drag.

HYDROS LARGE ARBOR Capacity Chart						
LINE WEIGHT	I	II	III	IV	V*	VI*
WF1	100					
WF2	75					
WF3	50	150				
WF4		125				
WF5		100	150			
WF6			125			
WF7			100	225		
WF8				200		
WF9				175	250	
WF10					225	
WF11					200	350
WF12						325
WF13						300

Hydros Reel Specifications

I Reel | weight: 4.1 oz. | 3 inches

II Reel | weight: 4.5 oz. | 3¼ inches

III Reel | weight: 4.9 oz. | 3½ inches

IV Reel | weight: 7.9 oz. | 4 inches

V Reel | weight: 8.8 oz. | 4¼ inches

VI Reel | weight: 10 oz. | 4½ inches

Capacity in Yards

All capacities are quoted using 20-lb Dacron® backing.

* Hydros V & VI reels are quoted using 30-lb Dacron® backing.

GUARANTEE

Your Hydros Large Arbor reel is unconditionally guaranteed against defects in materials and workmanship.

If you have any problems, simply send your reel and a \$10 check to the following address:

By USPS Mail: Orvis; Overhaul Services; 178 Conservation Way; Sunderland, VT 05250.

By FedEx or UPS: Orvis; Overhaul Services; 4182 Main St.; Manchester, VT 05254.

Your reel will be completely serviced (cleaned, lubricated, and returned to you postpaid) for a fee of \$10, plus cost of parts. If the reel is in any way defective in material or workmanship, your \$10 repair check will be returned to you at once.

Damaged reels can be repaired on an individual basis and repair work will be billed at the hourly shop rate, plus parts. We will provide a written estimate upon receipt of the reel prior to any work being done.

QUESTIONS?

If you have any questions about the operation and maintenance of your new reel, Orvis Technical Advisors are always available. Email: info@orvis.com. Phone: 1-800-778-4778.