

# ORVIS®

## ROD AND TACKLE

### Vortex VO<sub>2</sub>

#### INTRODUCTION

Vortex VO<sub>2</sub> fly reels features include:

- Fully machined from 6262 T6 bar stock aerospace-grade aluminum with an anodized finish for durability.
- More drag surface than any other reel in its class.
- Easily interchangeable spool.
- Left- to right-hand changeover in seconds with absolutely no tools required, just a nickel or a dime.
- Smooth and dependable drag system.
- Generous backing capabilities.

#### SPOOL REMOVAL

\*Note: Spools for original Vortex reels ARE NOT compatible with VO<sub>2</sub> reels. The spool releases with the turning of the screw in the middle of the reel. (figure 1). To remove, use a nickel or appropriately-sized screwdriver and rotate counterclockwise. The screw will remain in the spool housing even when fully unthreaded. Lift the spool out of the reel body.

#### LEFT-HAND CONVERSION

Vortex VO<sub>2</sub> reels have the drag factory installed for right-hand wind. To change your reel to left-hand wind, remove the spool as above. Lift the cork composite drag surface disk (figure 2) off the center spindle. You will see two drag engage pawls, one on top and one on bottom (figure 3). Move the pawl from “R” to “L” on both as indicated on the pawl housing. Return the cork composite drag surface disk back onto the spindle.

#### DRAG OPERATION

Vortex VO<sub>2</sub> reels feature a unique external radius drag system to ensure the most surface area in its class.

To adjust the drag, turn the knob clockwise to increase resistance, and counterclockwise to decrease it. The minimum drag setting should never be less than the pressure required to prevent over-running of the line on fast runs. Additional drag may be applied by palming the spool rim with your fingers or palm.

#### ROUTINE MAINTENANCE

Your new Vortex VO<sub>2</sub> reel has been properly lubricated prior to shipping. However, it should be cleaned and lubricated after extensive use or after contact with dirt, sand, or saltwater. Your reel should receive routine cleaning and maintenance at least twice each year. Lightly lubricate all moving components—handle, center spindle, and gear shaft with Penn reel lube, available in tackle shops. After lubrication, check screws for proper tightness. Do not put the reel away wet, or into a wet reel case or tackle box.

Following use in saltwater, the reel should be rinsed in fresh water and all parts, except drag surfaces, lightly oiled. The body and spool should be wiped with a lightly oiled cloth.

For extended storage, remove both line and backing and loosen the drag.

#### QUESTIONS?

If you have any questions about the operation and maintenance of your new reel, Orvis Technical Advisors are always available. Email: [info@orvis.com](mailto:info@orvis.com). Phone: 1-800-778-4778.

#### GUARANTEE

Your Orvis Vortex VO<sub>2</sub> reel is unconditionally guaranteed against defects in materials and workmanship.

If you have any problems, simply send your reel and a \$10 check to the following address:

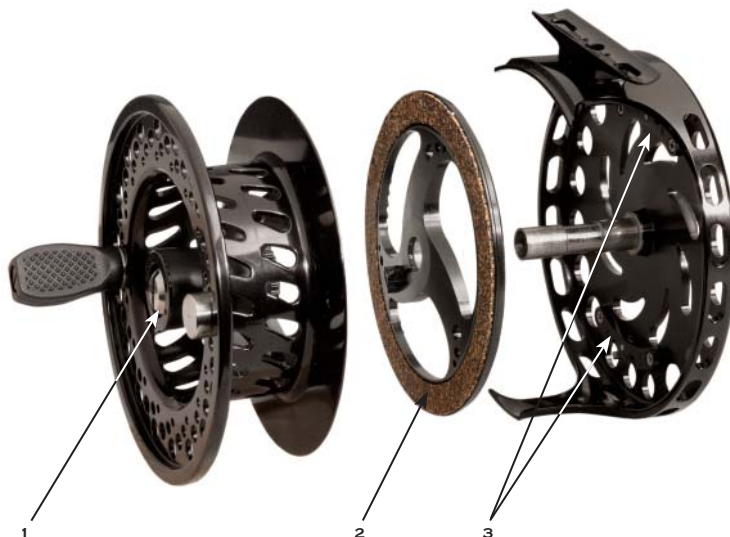
By USPS Mail: Orvis Reel Service; PO Box 798; Manchester, VT 05254.

By FedEx or UPS: Orvis Reel Service; Tennis Way, Rt. 7A; East Dorset, VT 05253.

If the reel is in any way defective in material or workmanship, your \$10 repair check will be returned to you at once.

Your reel will be completely serviced (cleaned, lubricated, and returned to you postpaid) for a fee of \$10, plus cost of parts.

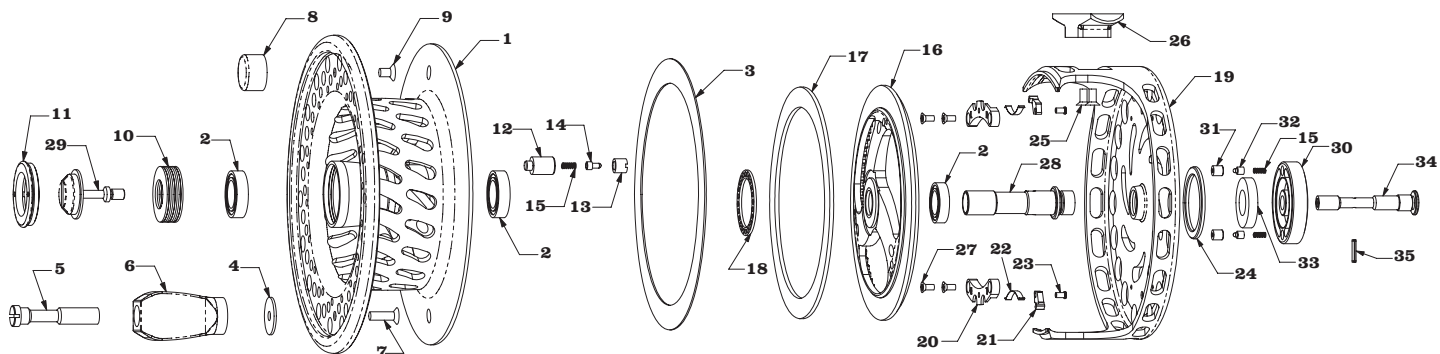
Damaged reels can be repaired on an individual basis and repair work will be billed at the hourly shop rate, plus parts. We will provide a written estimate upon receipt of the reel prior to any work being done.



# ORVIS®

## ROD AND TACKLE

### Vortex VO<sub>2</sub>



#### REEL ASSSEMBLY

- |                              |                                |                                 |  |
|------------------------------|--------------------------------|---------------------------------|--|
| <b>1</b> Spool               | <b>11</b> Spool Retaining Ring | <b>21</b> Pawl                  | <b>31</b> Drag Knob Detent Plunger Housing |
| <b>2</b> Bearing             | <b>12</b> Clicker Housing      | <b>22</b> Pawl Spring           | <b>32</b> Drag Knob Detent Plunger         |
| <b>3</b> Rulon® Washer       | <b>13</b> Clicker Ferrule      | <b>23</b> Pawl Shaft            | <b>33</b> Drag Knob Brushing               |
| <b>4</b> Handle Washer       | <b>14</b> Clicker Plunger      | <b>24</b> Drag Knob Detent Ring | <b>34</b> Drag Knob Shaft                  |
| <b>5</b> Handle Shaft        | <b>15</b> Coil Spring          | <b>25</b> Foot Screw            | <b>35</b> Spring Pin                       |
| <b>6</b> Handle              | <b>16</b> Friction Disc        | <b>26</b> Foot                  |  |
| <b>7</b> Handle Screw        | <b>17</b> Cork Washer          | <b>27</b> Pawl Holder Screw     |  |
| <b>8</b> Counterweight       | <b>18</b> Clicker Detent Ring  | <b>28</b> Frame Shaft           |  |
| <b>9</b> Counterweight Screw | <b>19</b> Frame                | <b>29</b> Drag Screw            |  |
| <b>10</b> Drag Spring        | <b>20</b> Pawl Holder          | <b>30</b> Drag Knob             |  |

VORTEX VO <sub>2</sub> REEL Capacity Chart (WF Lines)				
LINE WEIGHT	III	IV	V	VI
<b>WF4</b>	<b>150/200 yds</b>			
<b>WF5</b>	<b>125/175</b>			
<b>WF6</b>	<b>100/150</b>	<b>250/325 yds</b>		
<b>WF7</b>	<b>75/125</b>	<b>225/300</b>	<b>250/375 yds</b>	
<b>WF8</b>		<b>200/275</b>	<b>225/350</b>	
<b>WF9</b>		<b>175/250</b>	<b>200/325</b>	
<b>WF10</b>			<b>175/300</b>	<b>375/575 yds</b>
<b>WF11</b>			<b>150/275</b>	<b>350/550</b>
<b>WF12</b>				<b>325/525</b>
<b>WF13</b>				<b>300/500</b>

#### Vortex VO<sub>2</sub> Reel Specifications

**III** Reel weight: 6½ oz. | 3¼ inches

**IV** Reel weight: 9 oz. | 3½ inches

**V** Reel weight: 10 oz. | 4¼ inches

**VI** Reel weight: 11½ oz. | 4½ inches

#### Capacity in Yards

All capacities are quoted using 30-lb Dacron® backing first, then 35-lb Gel-Spun 150/200 yds. Double Taper, Two Hander, Long Belly, Salmon Steelhead, Spey 4-5wt., reduce by 25 yds., 6-9wt., reduce by 50-100 yds, 10-13wt., reduce by 100-200 yds. Spring Creek, Clear Intermediate 4,5wt., increase by up to 25 yds., 6-9wt., increase by 50-100 yds., 10-13 wt., increase by 50-100 yds.